
BRISTAN

Installation Instructions and User Guide

Gallery Rapid Boiling 4-in-1
ScaleFilter Sink Mixer Chrome

Models Covered:

GLL RAPS NK4 SF C

**Please keep this booklet for future
reference.**

Installer, when you have read these
instructions please ensure you leave
them with the user.

Contents

Thank you for choosing Bristan, the UK's leading tap and shower expert.

We have designed this product to be easy to install and use. It has also been assessed to all of the relevant British Standards, and conforms to UKCA and CE Regulations.


These instructions are for your guidance to a safe and successful installation, so please read them thoroughly and retain for future reference.




Contents

- Important Safety Information **3-4**
- Specification **5**
- Installation Requirements **6-7**
- Installation **8-11**
- Filter Commission **9**
- Prime the Filter/Tank **11**
- Operation **12-13**
- General Cleaning **13**
- Maintenance **14-15**
- Maintenance Schedule **16**
- Troubleshooting **17**
- Notes **18-19**

Important Safety Information

- **Please read these instructions thoroughly and retain for future use.**
- All products manufactured and supplied by Bristan are safe provided they are installed, used correctly and receive regular maintenance in accordance with these instructions.
- **If you are in any doubt about your ability to install this product safely you must employ the services of an experienced qualified plumber/electrician.**
-  **Warning:** The Boiling Water Tank is intended for domestic use only. Do not install the unit outdoors or where it might be subjected to damp or freezing conditions.
- Check the power rating of the Boiling Water Tank is suitable for the power rating of the electrical circuit that it is being installed on
- Check that no parts are missing or damaged on the Boiling Water Tank or Tap as per the instructions. If parts are missing or damaged, do not install and contact Customer Services
- Do not install this Boiling Water Tank in a room/environment without adequate ventilation or an extractor fitted. This is required to prevent condensation forming within the unit.
- This Boiling Water Tank is only intended for use with the Boiling Water Tap supplied. Using this tank with any other tap will invalidate the guarantee.
- Do not attempt to open or modify the Boiling Water Tank as this will invalidate the guarantee.

Important Safety Information

- The filter supplied must be replaced every six months for protection of your Boiling Water Tank. Failure to do so will invalidate your guarantee.
- To protect against electric shock, do not place the cord, plugs or Boiling Water Tank near or in water/other liquids. Do not operate the appliance or touch the plug with wet hands.
- The power lead is an integral part of the Boiling Water Tank. If the power lead is damaged, stop using immediately and contact Customer Services. Do not attempt to fix as this can result in serious injury or death.
- Do not remove the earthing terminal, reconstruct the plug, or disassemble the main box or any part for the power.
- The appliance must be installed vertically with the inlet and outlet connections at the top of the unit.
-  **Warning:** This appliance is not intended for use by children or persons with reduced physical, sensory or mental capabilities or lack of experience and knowledge; unless they have been given supervision or instruction concerning use of appliance in a safe way, and understand the hazards involved.
- Children should not play with the appliance. Cleaning and maintenance should not be undertaken by children without supervision.
- Turn off all controls before unplugging. Unplug the Boiling Water Tank by grasping the plug, not the cable.

Installation Requirements

Positioning the Boiling Water Tank

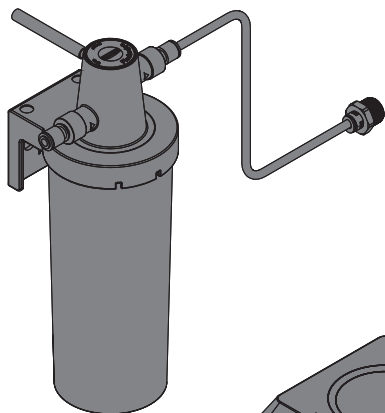
Place the tank in a suitable, well ventilated location that will not fall below 0°C.

Ensure that the tank is installed vertically on a level surface with adequate space around the tank. Keep away from direct sunlight.

We recommend installing a Drain Pan and waste (not supplied) to protect against water damage and for ease of emptying the tank.

Also ensure that the Filter is in an easily accessible place for replacement purposes.

Ensure that the tap tails and filter connections can reach the connection points.



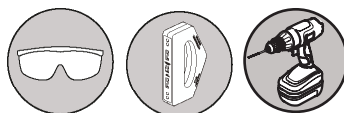
150mm

25mm



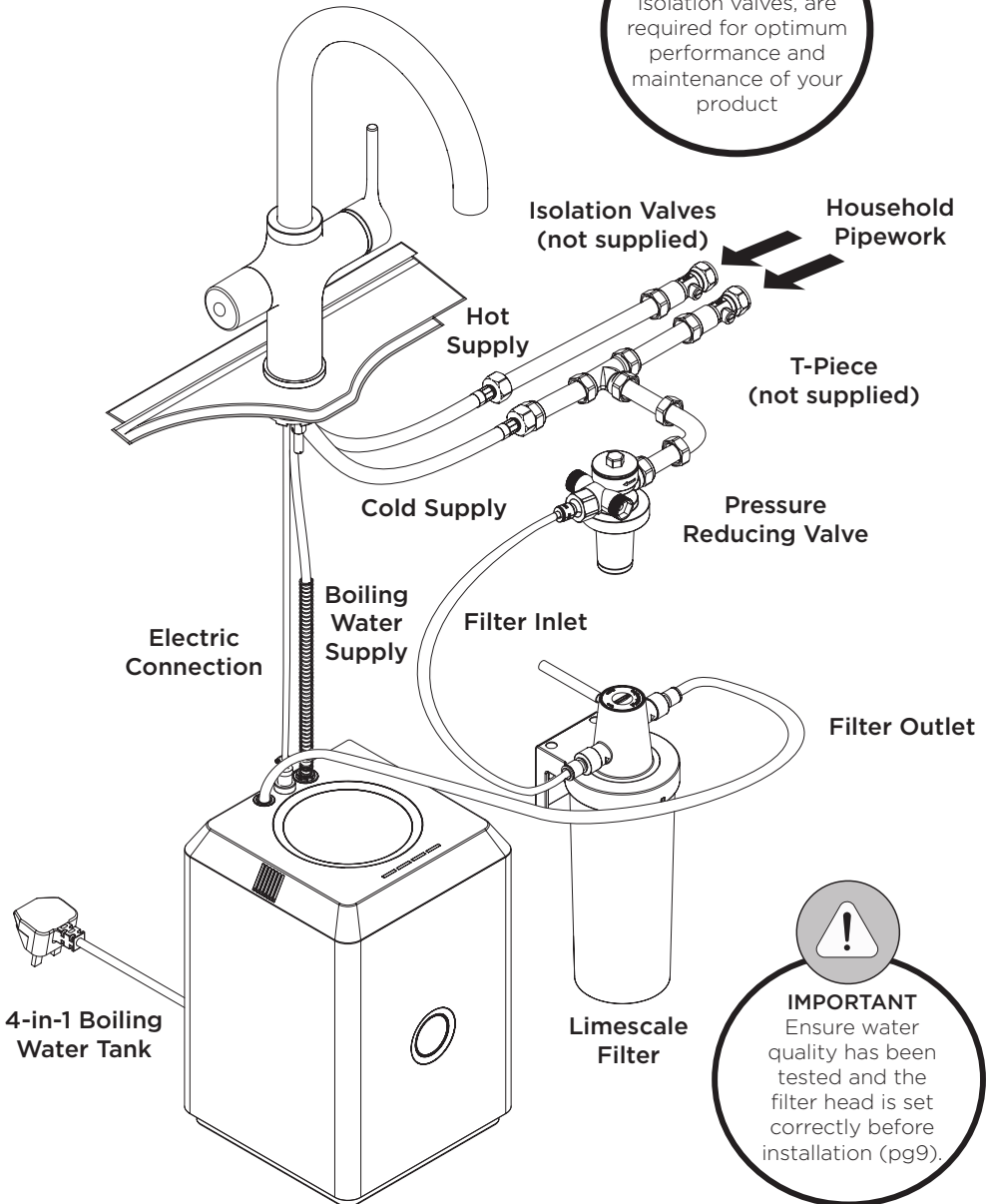
IMPORTANT

Your filter cartridge must be replaced **every six months** to ensure adequate performance and maintain the guarantee.



Installation Requirements

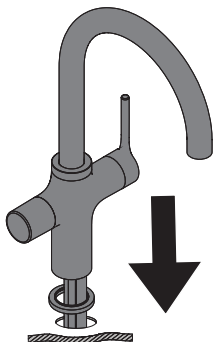
Connection Diagram



Installation

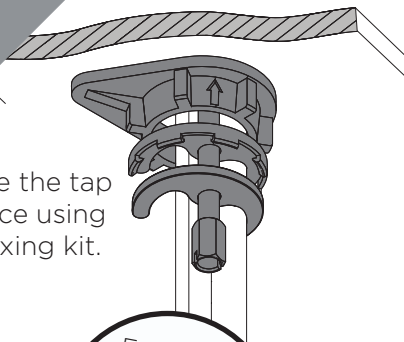
1

Feed the pipes through the sink hole and place the tap body.



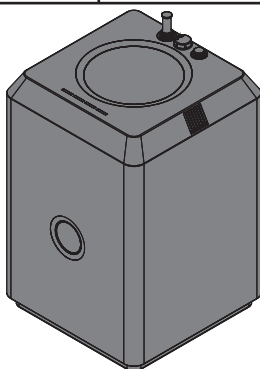
2

Secure the tap in place using the fixing kit.



3

Position the Boiling Water Tank in a suitable location. (See Installation Requirements).



Ensure the filter is easily accessible for filter replacements.



Ensure the tap tails and cables can reach connection points.

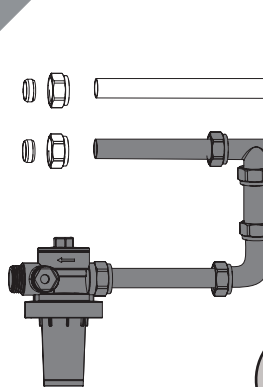


IMPORTANT

Do not tamper with the PRV as this will affect the performance of your tap.

4

Plumb the domestic pipework to the location, splitting off the cold supply.



IMPORTANT

A single check valve on the cold supply is required as per IRN R150.



5

Hot



Cold



Connect the tap connections to the domestic water supplies.

You are now ready to commission the filter.

Filter Commissioning



IMPORTANT

Do not shake the test strip.
Once developed, colours are stable for 1 minute.

6



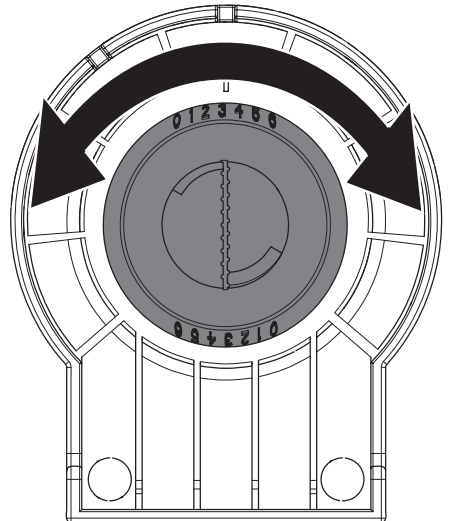
Draw a small amount of cold water. Using the test strip provided, dip into the water for 3 seconds and wait for 20 seconds to develop.

Once developed, match the test strip results to the colour block on the back of the test strip packet.

Test Strip Colour	Yellow	Dark Yellow	Orange	Dark Orange	Red	Dark Red	Very Dark Red
Alkalinity Measurement (PPM)	0	50	120	180	250	425	1000
Filter Setting	6	5	4	3	2	1	0

7

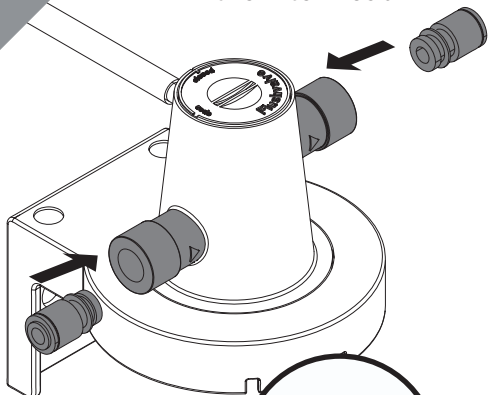
Using the result of the water test carried out in Step 6, push and turn the pre-fitted blue key to the required filter setting. The key must then be removed from the filter head and kept for future adjustment.



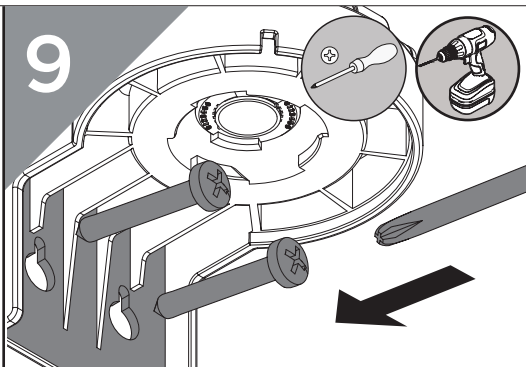
Installation

8

Push the supplied pipework reducers into the filter head.



9



Fix the filter head to the wall/surface. Ensure easy access, and that the connecting pipes from the tap and tank can reach.

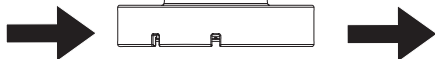
Cut the filter pipe tubes to size.



10

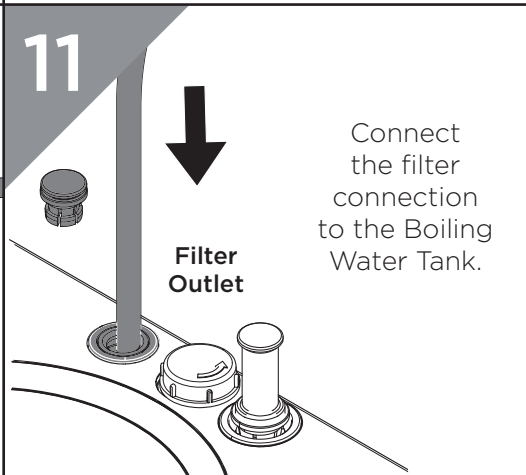
Filter Inlet

Filter Outlet



Push the filter tubes into the filter head.

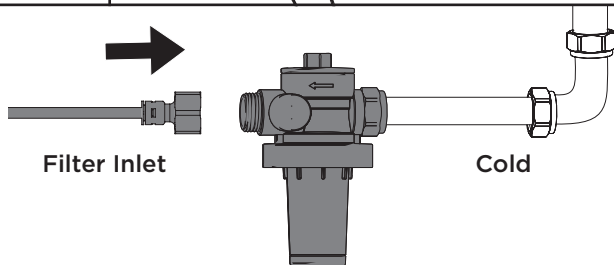
11



Connect the filter connection to the Boiling Water Tank.

12

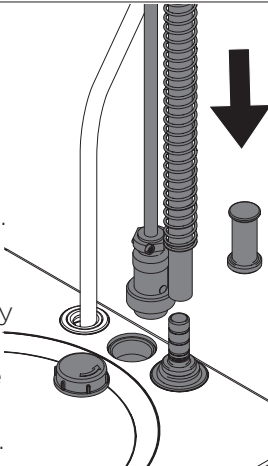
Screw the remaining filter connection on to the PRV.



Installation

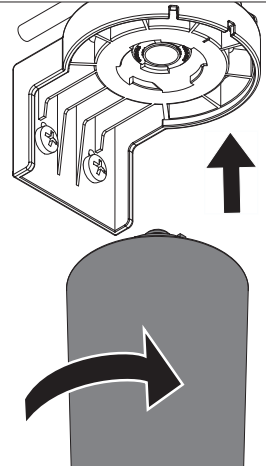
13

Connect the Electrical cable. Push on the silicon hose, trimming off any excess. Slide down the spring to secure in place.



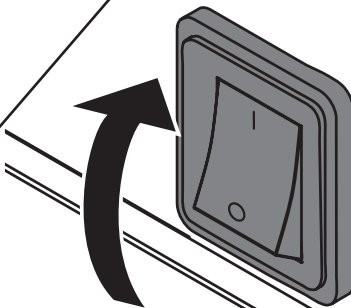
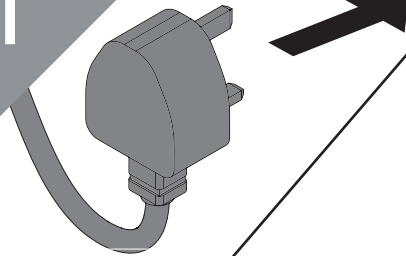
14

Attach the filter sump to the filter head.



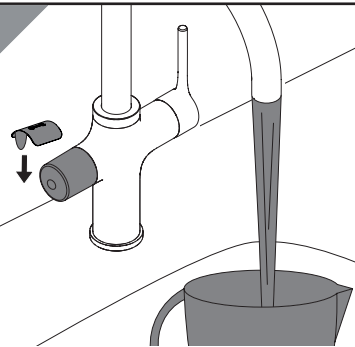
Prime the Filter/Tank

1



Switch on the Boiling Water Tank.

2



Place a jug under the spout and expel all air from the system.

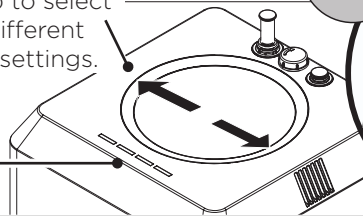
Check connections for any leaks. Run off at least 20 litres of water from the Boiling Water Touch Control handle, resting the system every 30 seconds.

Your Tap is now Ready for Use.

Operation

Touch Sensitive Ring:
Touch and Tap to select through 4 different temperature settings.

Temperature Setting Bars



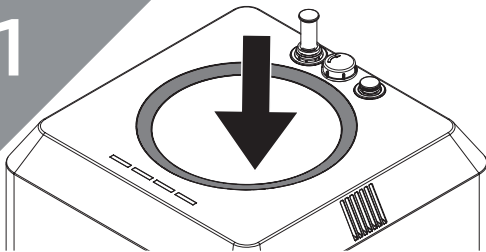
IMPORTANT
The measured 98 degrees within the tank may slightly reduce depending on external conditions, i.e. spout/body/product temperature, length of pipework

IMPORTANT
The Start-Up procedure will need to be carried out each time the Tank is switched on or if power stops running to the unit.

Lit Bar Sequence	Temperature Range	Nominal Temperature
1st -	75-80°C	80°C
2nd -	81-86°C	86°C
3rd -	87-92°C	92°C
4th -	93-98°C	98°C
All -	Tank Locked/Cold Mode - Water stays unheated.	
None -	Powered Off/Tank Unlocked - enter temp setting.	

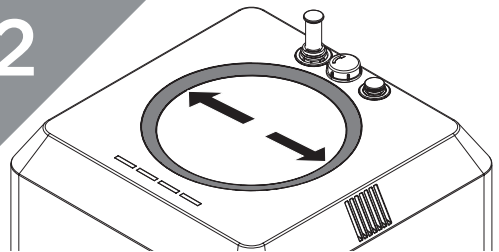
Start-Up/Change Temperature

1



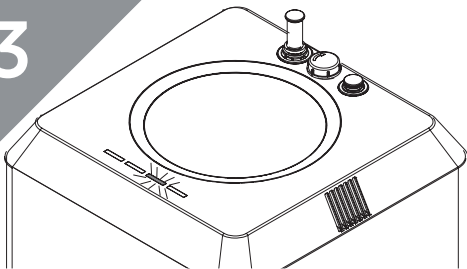
Press and hold the Touch Sensitive Ring for approx. 8 seconds until the display starts flashing. Once unlit, the tank will be unlocked for heating.

2



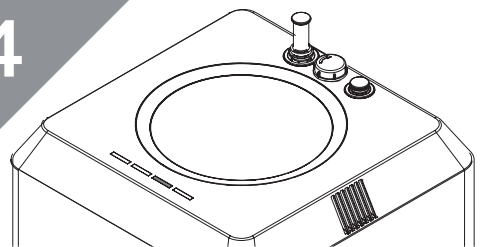
Tap the Touch Sensitive Ring or close to it within 2cm to select your desired Temperature Setting. See the above table for Temperature Settings.

3



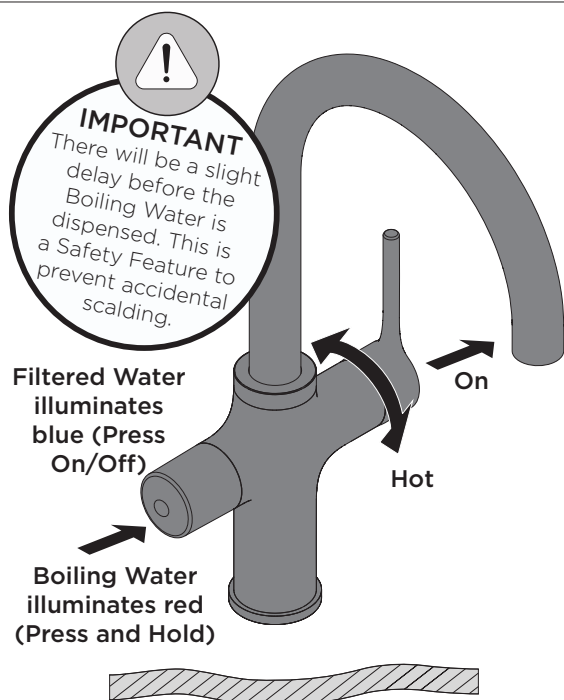
The Temperature Setting Bar will flash whilst the water is heating up.

4



The water will be at the set temperature once the Temperature Setting Bar stays lit.

Operation

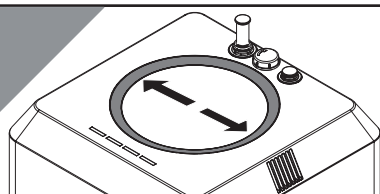


Optimum Temperatures

Nominal Temperature	Suitable For
80°C	Green Tea
86°C	Instant Coffee, Oolong Tea
92°C	Oolong Tea, Brewing Coffee
98°C	Black Tea, Herbal Tea

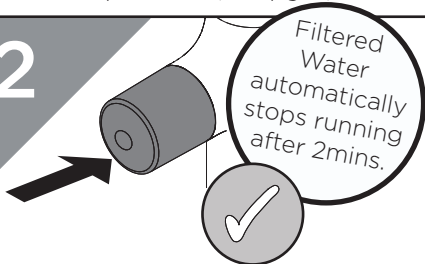
For Filtered/Boiling Water

1



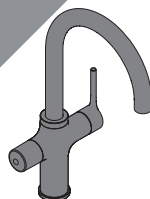
Set up the Boiling Water Tank temperature (see pg10).

2



Press for Filtered Water or Press and Hold for Boiling Water.

3



When switching between the Filtered or Boiling Water functions, there will be a slight delay before water starts flowing.

General Cleaning

Your fitting has a high quality finish and should be treated with care to preserve the visible surfaces. All surfaces will wear if not cleaned correctly, the only safe way to clean your product is to wipe with a soft damp cloth. Stains can be removed using washing up liquid.

All bath cleaning powders and liquids will damage the surface of your fitting, even the non-scratch cleaners.

Note: Never use abrasive detergents or disinfectants or those containing alcohol, hydrochloric acid or phosphoric acid.

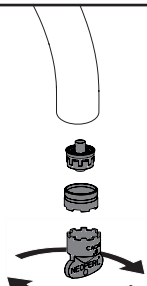
Maintenance

Cleaning Outlet

1

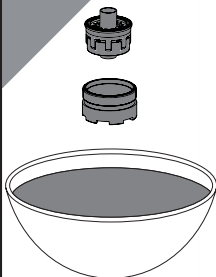


IMPORTANT
Isolate the water supply before starting!



Remove the aerator.

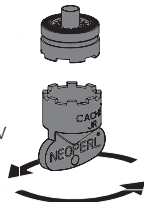
2



Using a suitable solution, scrub and wash the aerator until fully de-scaled. Rinse thoroughly.

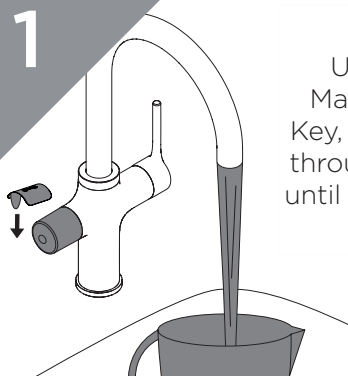
3

Put the aerator together and screw in place.



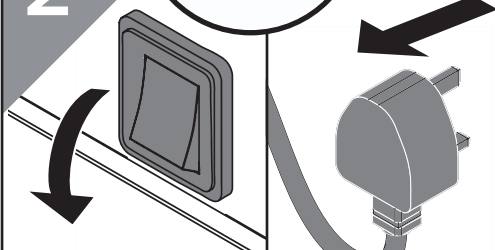
Long-Term Storage when Not in Use

1



Using the Maintenance Key, flush water through the tap until it runs cold.

2

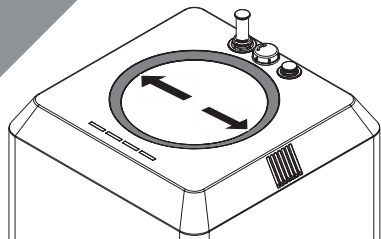


Switch off the Boiling Water Tank and unplug.

Flush the tank if the tap isn't in use for long periods of time.

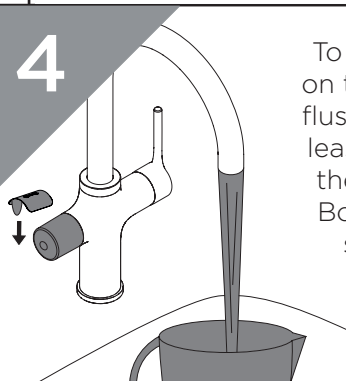


3



Re-connect and set up the Boiling Water Tank on the maximum temperature setting (see pg10).

4



To re-use, turn on the Tank and flush through at least 5 litres on the maximum Boiling Water setting to sterilise.

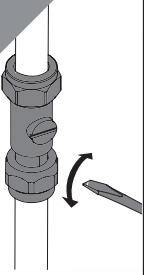
Maintenance

Changing the Filter

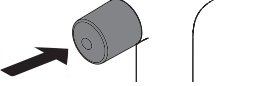


IMPORTANT
Your filter cartridge must be replaced **every six months** to ensure adequate performance and maintain the guarantee.

1



Press



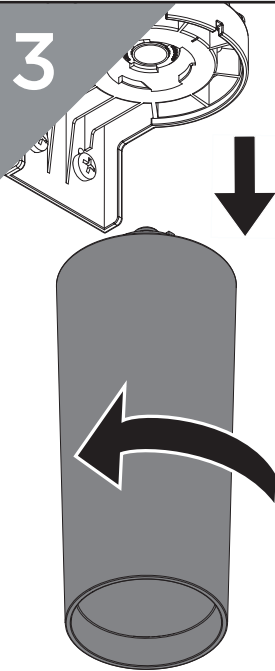
Isolate the water supply and draw off all remaining water.

2



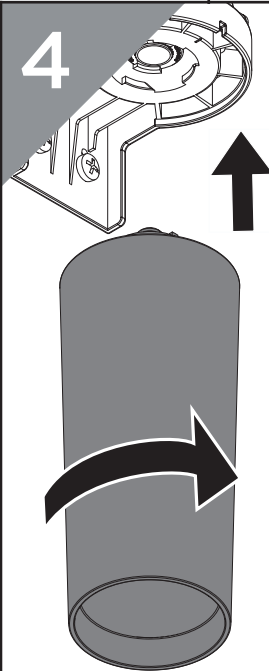
Switch off the Boiling Water Tank.

3



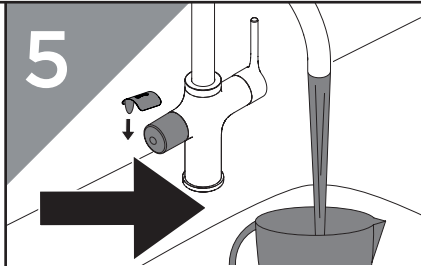
Place a small bowl underneath the filter sump and remove it.

4



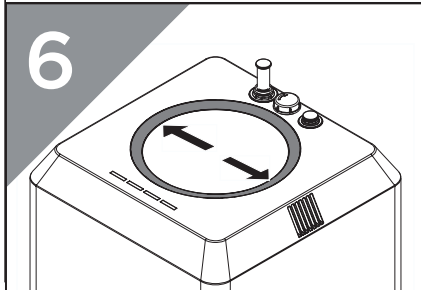
Dispose of the old filter and replace with the new filter.

5



Turn on the water supply. Follow the Prime Filter/Tank section to re-prime the filter.

6



Set up the Boiling Water Tank on the desired temperature setting (see pg13).

Maintenance Schedule

We have included this maintenance schedule in order to help keep track of when to replace your filter; which can be ordered using **RAP SCALE FILT** on the Bristan website. Please ensure your plumber fills in the date of installation.

Date Installed/Replaced	Date Due for Replacement
___ / ___ / _____	

Notes

Troubleshooting

Symptom	Cause	Remedy
No flow from the Boiling Water Function	Boiling Water Tank is empty at first switch-on.	Follow the Preparation for Use section.
	Boiling Water Tank isn't holding water.	Check connections for any leaks. Contact Customer Services.
Boiling Water Touch Control flashing red.	Boiling Water has been running for a long period	This is a safety feature to prevent the tank from over-heating. Power off and rest for 2 minutes before switching back on. If the problem persists, please contact Customer Services.
	Frequent switching between cold and boiling water over an extended period	
Water/Steam is spitting from the spout.	Unit is boiling.	Press the Boiling Water Touch Control handle and release the water.
		Adjust the water temperature to a lower setting - See Operation.
		Check the aerator isn't blocked.
		Follow the Preparation for Use section to remove any airlocks.
Water is not hot.	The Boiling Water Tank is unplugged.	Make sure the appliance is plugged in and the display is lit. Make sure the circuit breaker and fuse are working correctly.
	The Boiling Water Tank is not switched on.	Ensure the Boiling Water Tank is plugged in and that the Start-Up steps (pg10) have been followed. Wait until the Temperature Setting Bar stays lit before use.
	Water hasn't finished heating up.	
	No heating option has been selected/Boiling Water Tank is locked.	Ensure that all four lights are not lit on the Boiling Water Tank. If they are, following the Start-Up steps to unlock the tank.
Water is too hot.	The water temperature is set too high.	Set the water temperature to a lower setting - See Operation.
Water is dripping from the spout.	The Expansion Chamber isn't draining correctly.	Draw off 500ml of water to clear and prime the system. Avoid drawing off less than 150ml per use.
	Blocked spout.	See Maintenance Section to Clean Aerator.
Slow flow from the spout.	Water Filter needs changing.	Refer to the Maintenance Steps to change the water filter. This must be changed every 6 months or it will invalidate the guarantee.
Water doesn't flow straight away.	As a safety feature, water is drawn into the tank after each use to prevent accidental scalding. There will be a slight delay until the instant hot water appears.	After a large volume of water has been drawn off, there may be a slightly longer delay in water appearing from the Instant Hot Water spout.
No water flowing.	Closed/Partially closed isolation valves.	Make sure isolation valves are fully open.
	Flexible tails kinked/blocked.	Ensure pipes are not twisted or kinked to restrict flow.
	Boiling Water Tank may be blocked.	Contact Customer Services.

Need help? Give us a call on **0330 026 6273** and speak to one of our trained advisors. **17**

Notes

Notes

Issue: D3

Part Number: FI GLL RAPSNK4 SF C

BRISTAN

Bristan Group Ltd.

Birch Coppice Business Park
Dordon
Tamworth
Staffordshire
B78 1SG

Web: www.bristan.com

Email: enquire@bristan.com

A Masco Company

At Bristan, we want to make things as easy as possible for our customers. That's why we offer solid guarantees on all our products, effective from the date of purchase, to give you peace of mind. To start your free guarantee simply scan the QR code and register your product. Alternatively visit www.bristan.com/register.

For any other queries, please call our Customer Service on 0330 026 6273 where our expert team of advisors will be able to offer you any help and advice.
For full guarantee terms and conditions visit www.bristan.com/service-centre/guarantees.



We Know & We Care