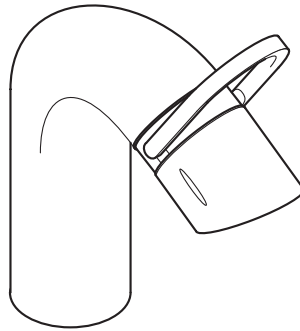


Axor Arco



Oberflächen:

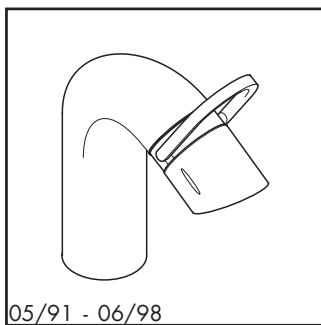
Colore:

Colours:

000	chrom cromato chrome plated (05/91 - 06/07)
090	chrom/gold-optik cromato/dorato chrome plated/gold optic (04/95 - 05/05)
450	weiß bianco white (05/91 - 04/00)
490	weiß/gold-optik bianco/dorato white/gold optic (04/95 - 03/96)
650	aranja canna di fucile aranja (05/91 - 04/97)
680	aranja/gold-optik canna di fucile/dorato aranja/gold optic (04/97 - 07/01)
990	gold-optik dorato gold optic

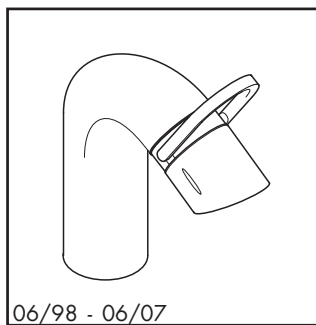
Axor Arco

Waschtischmischer / Miscelatore lavabo / Basin mixer



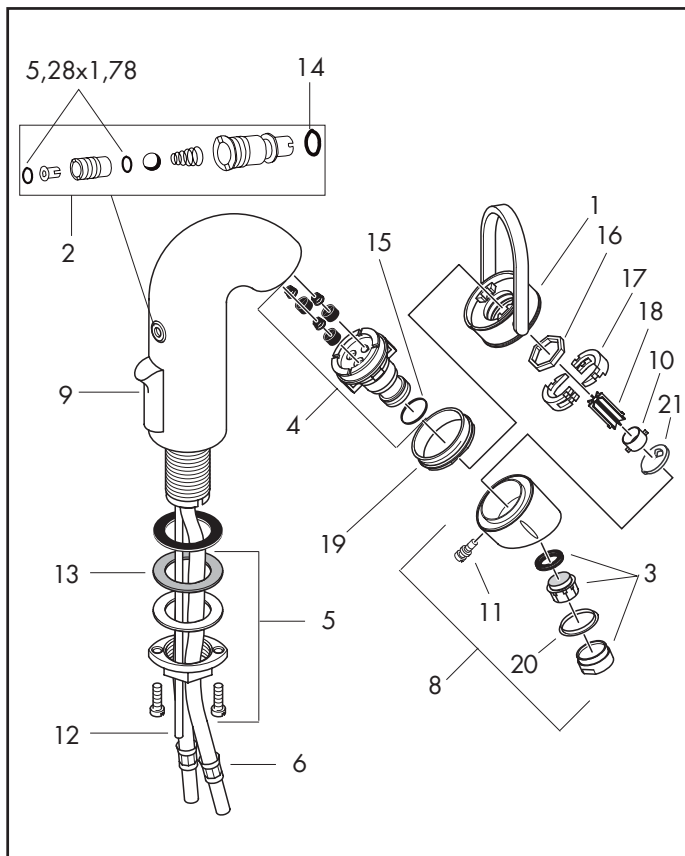
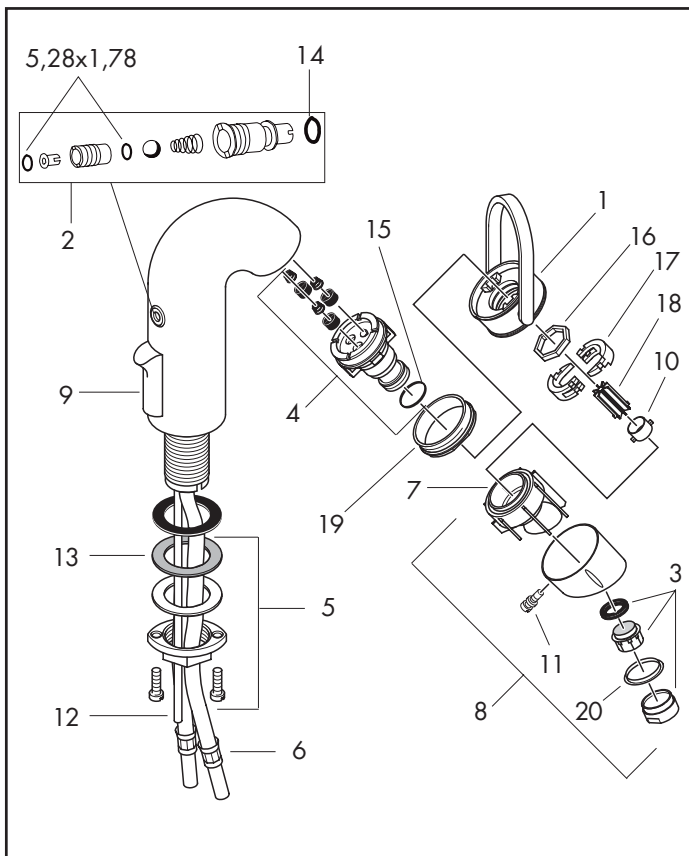
05/91 - 06/98

11010XXX



06/98 - 06/07

11010XXX



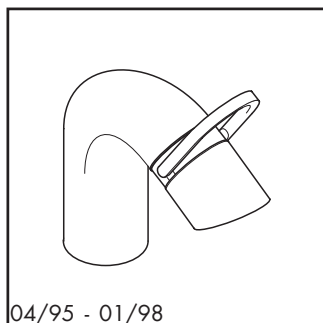
Pos.	Bezeichnung	Descrizione	Description	Nr./Nr./No.	VE	PG
1	Griff	manopola	handle	11091XXX	1	15*
2	Mundduschenanschluß	attacco doccia dentale	mouth spray connection	94084000	1	9
3	Luftsprudler M24x1	rompigetto M24x1	aerator M24x1	13085XXX	1	4*
4	Kartusche kpl.	cartuccia completa	cartridge, assy	11095000	1	14
5	Schaftbefestigung kpl.	set di fissaggio completo	fixing set	13961000	1	7
6	Anschlußschlauch 450 mm	raccordo flessibile 450 mm	connection hose 450 mm	94071XXX	1	8*
7	Innenschnabe	bocca erogazione	interior spout	94183000	1	9
8	Auslauf kpl.	bocca erogazione compl.	spout cpl.	11098XXX	1	13*
9	Zugknopf	pomello deviatore	diverter knob	96900XXX	1	5*
10	Verteilerbuchse	distributore	distribution device	97405000	1	5
11	Schraube	vite	screw	97482000	1	3
12	Zugstangenverlängerung	prolunga per asta salterello	pull rod extension	97653000	1	4
13	Gleitring	anello a collare	lever collar	97548000	1	1
14	O-Ring 8x2	O-Ring 8x2	O-ring 8x2	98112000	1	1
15	A-Ring 16,2x2,62	A-Ring 16,2x2,62	A-ring 16,2x2,62	97676000	1	1
16	Gleitring	anello a collare	lever collar	97564000	1	1
17	Klammer (2 Stück)	crampo (2 pezzo)	cramp (2 pieces)	97757000	Set	3
18	Laminator	accoppiatrice	laminator	97566000	1	1
19	Mutter	ghiera di fissaggio	nut	97565000	1	3
20	Blende	cappuccio	cover	97776000	1	1
21	Scheibe	disco	disc	97784000	1	6
	Ablaufventil, siehe Kap. 70	cap scarichi, vedere capitolo 70	pop up waste, see chapter 70	94139XXX	1	15*

10.2 XXX = Oberflächenbezeichnung siehe Seite 10.1 / *die PG ist für die Standardoberfläche, andere Oberflächen sind im Artikelverzeichnis
 XXX = vedere pagina 10.1 per i codici colore/*la categoria prezzo vale per la superficie standard, altre superfici si trovano nell'indice degli articoli
 1/2008 XXX = Please see page 10.1 for finish indicators / * the PG is for standard colours, PG for other colours are in the Code Numbers

hansgrohe

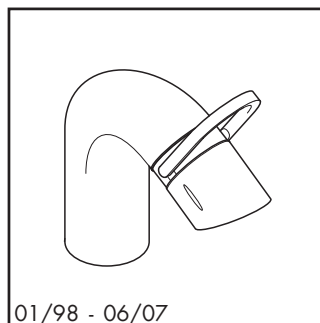
Axor Arco

Waschtischmischer / Miscelatore lavabo / Basin mixer



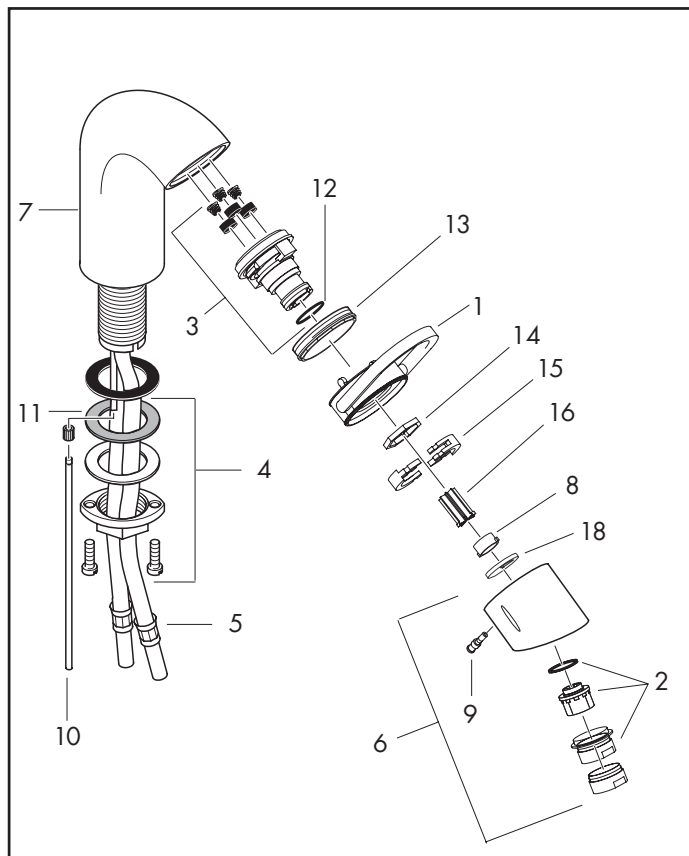
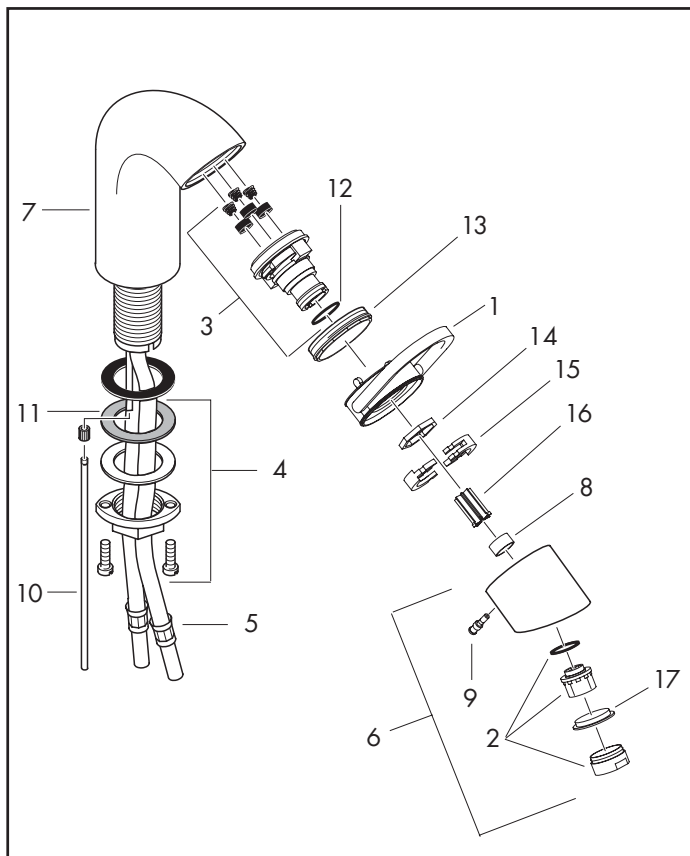
04/95 - 01/98

11015XXX



01/98 - 06/07

11015XXX



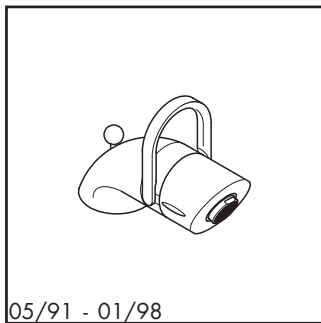
Pos.	Bezeichnung	Descrizione	Description	Nr./Nr./No.	VE	PG
1	Griff	manopola	handle	11091XXX	1	15*
2	Luftsprudler M24x1	rompigetto M24x1	aerator M24x1	13085XXX	1	4*
3	Kartusche kpl.	cartuccia completa	cartridge, assy	11095000	1	14
4	Schaftbefestigung kpl.	set di fissaggio completo	fixing set	13961000	1	7
5	Anschlußschlauch 600 mm	raccordo flessibile 600mm	connection hose 600 mm	14099XXX	1	9*
6	Auslauf kpl.	bocca erogazione compl.	spout cpl.	11098XXX	1	13*
7	Zugknopf	pomello deviatore	diverter knob	96900XXX	1	5*
8	Verteilerbuchse	distributore	distribution device	97405000	1	5
9	Schraube	vite	screw	97482000	1	3
10	Zugstangenverlängerung	prolunga per asta salterello	pull rod extension	97653000	1	4
11	Gleitring	anello a collare	lever collar	97548000	1	1
12	A-Ring 16,2x2,62	A-Ring 16,2x2,62	A-ring 16,2x2,62	97676000	1	1
13	Mutter	ghiera di fissaggio	nut	97565000	1	3
14	Gleitring	anello a collare	lever collar	97564000	1	1
15	Klammer (2 Stück)	crampo (2 pezzo)	cramp (2 pieces)	97757000	Set	3
16	Laminator	accoppiatrice	laminator	97566000	1	1
17	Blende	cappuccio	cover	97776000	1	1
18	Scheibe	disco	disc	97784000	1	6
	Ablaufventil, siehe Kap. 70	cap scarichi, vedere capitolo 70	pop up waste, see chapter 70	94139XXX	1	15*

hansgrohe

XXX = Oberflächenbezeichnung siehe Seite 10.1 / *die PG ist für die Standardoberfläche, andere Oberflächen sind im Artikelverzeichnis
 XXX = vedere pagina 10.1 per i codici colore/*la categoria prezzo vale per la superficie standard, altre superfici si trovano nell'indice degli articoli
 XXX = Please see page 10.1 for finish indicators / * the PG is for standard colours, PG for other colours are in the Code Numbers

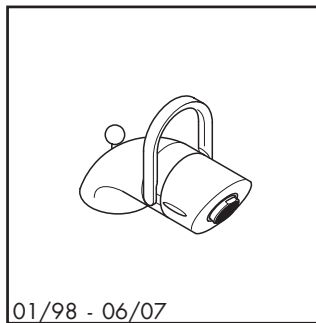
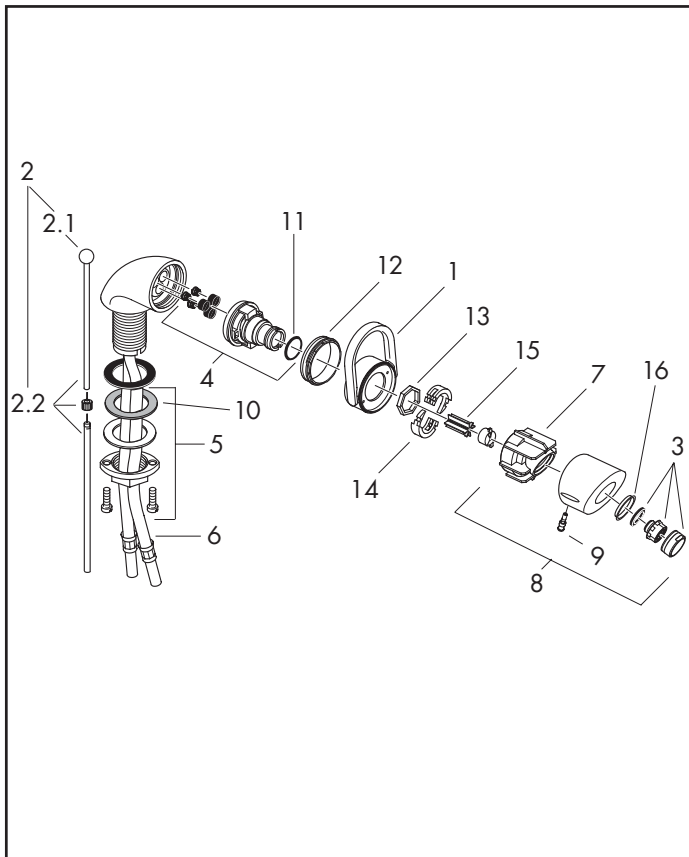
Axor Arco

Bidetmischer / Miscelatore bidet / Bidet mixer



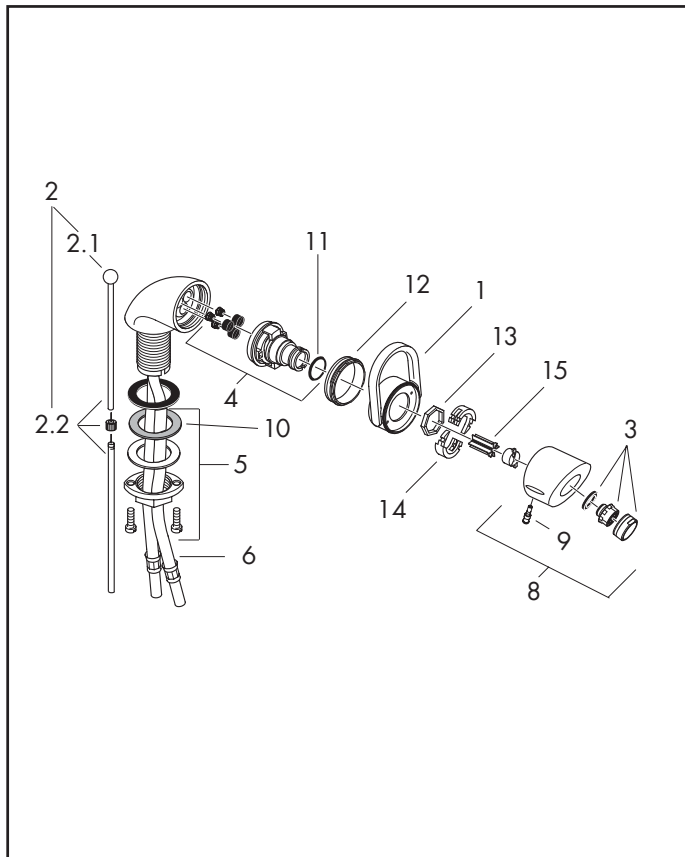
05/91 - 01/98

11200XXX



01/98 - 06/07

11200XXX



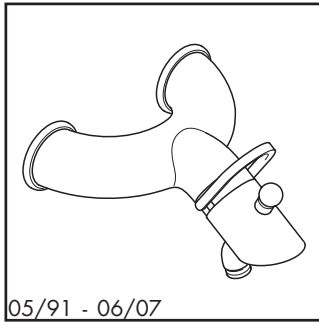
Pos.	Bezeichnung	Descrizione	Description	Nr./Nr./No.	VE	PG
1	Griff	manopola	handle	11091XXX	1	15*
2	Zugstange kpl.	asta salterello completa	pop up rod	92620XXX	1	8*
2.1	Zugknopf	pomello deviatore	diverter knob	94066XXX	1	3*
2.2	Zugstange	asta salterello	pull rod	94067000	1	6
3	Luftsprudler M24x1	rompigetto M24x1	aerator M24x1	13085XXX	1	4*
4	Kartusche kpl.	cartuccia completa	cartridge, assy	11095000	1	14
5	Schaftbefestigung kpl.	set di fissaggio completo	fixing set	13961000	1	7
6	Anschlußschlauch 450 mm	raccordo flessibile 450 mm	connection hose 450 mm	94071XXX	1	8*
7	Innenschnaube	bocca erogazione	interior spout	94183000	1	9
8	Auslauf kpl.	bocca erogazione compl.	spout cpl.	11098XXX	1	13*
9	Schraube	vite	screw	97482000	1	3
10	Gleitring	anello a collare	lever collar	97548000	1	1
11	A-Ring 16,2x2,62	A-Ring 16,2x2,62	A-ring 16,2x2,62	97676000	1	1
12	Mutter	ghiera di fissaggio	nut	97565000	1	3
13	Gleitring	anello a collare	lever collar	97564000	1	1
14	Klammer (2 Stück)	crampo (2 pezzo)	cramp (2 pieces)	97757000	Set	3
15	Laminator	accoppiatrice	laminator	97566000	1	1
16	Blende	capuccio	cover	97776000	1	1
	Ablaufventil, siehe Kap. 70	cap scarichi, vedere capitolo 70	pop up waste, see chapter 70	94139XXX	1	15*

10.4 XXX = Oberflächenbezeichnung siehe Seite 10.1 / *die PG ist für die Standardoberfläche, andere Oberflächen sind im Artikelverzeichnis
 XXX = vedere pagina 10.1 per i codici colore/*la categoria prezzo vale per la superficie standard, altre superfici si trovano nell'indice degli articoli
 1/2008 XXX = Please see page 10.1 for finish indicators / * the PG is for standard colours, PG for other colours are in the Code Numbers

hansgrohe

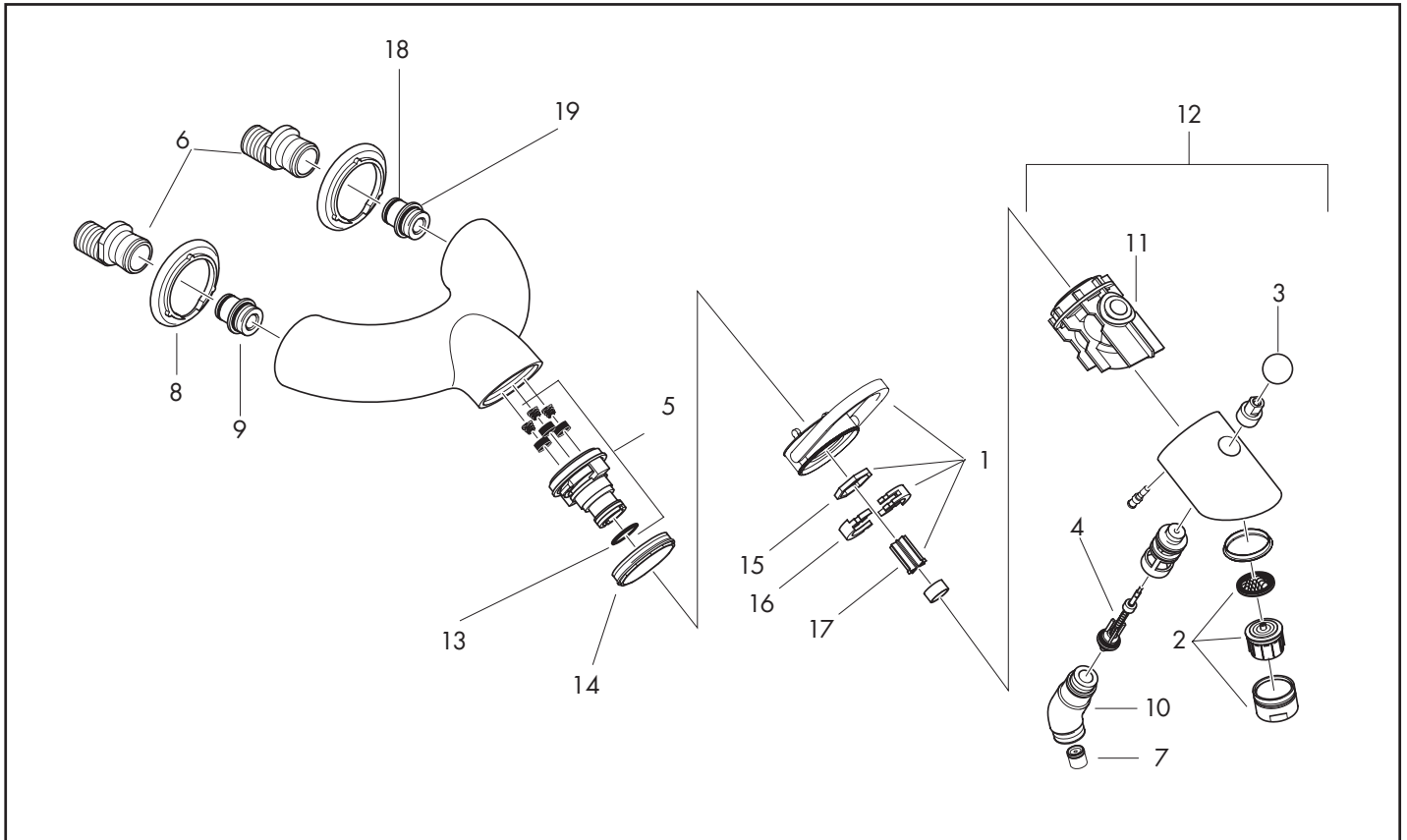
Axor Arco

Wannenmischer / Miscelatore bordo vasca / Bath mixer



05/91 - 06/07

11400XXX



Pos.	Bezeichnung	Descrizione	Description	Nr./Nr./No.	VE	PG
1	Griff	manopola	handle	11091XXX	1	15*
2	Luftsprudler M28x1 B	rompigetto M28x1 B	aerator M28x1 B	13485XXX	1	6*
3	Zugknopf	pomello deviatore	diverter knob	94102XXX	1	6*
4	Umsteller	deviatore	selector	94103000	1	10
5	Kartusche kpl.	cartuccia completa	cartridge, assy	11095000	1	14
6	S-Anschlüsse	raccordi eccentrici	ball S - unions	94136000	Set	11
7	Rückflußverhinderer DW 15 (2 St.)	valvola antiriflusso DW 15 (2 pezzo)	non return valve DW 15 (2 pieces)	94074000	Set	3
8	Rosette Ø 64 mm	copertura Ø 64 mm	escutcheon Ø 64 mm	96464XXX	1	8*
9	Anschlußnippel (2 Stück)	raccordo a vite (2 pezzo)	connecting thread (2 pieces)	97236000	Set	4
10	Schlauchanslußwinkel	tubo di raccordo per flessibile	hose connection angel	97260XXX	1	13*
11	Innenschnaube	bocca erogazione	interior spout	98559000	1	11
12	Auslauf kpl.	bocca erogazione compl.	spout cpl.	97241XXX	1	19*
13	A-Ring 16,2x2,62	A-Ring 16,2x2,62	A-ring 16,2x2,62	97676000	1	1
14	Mutter	ghiera di fissaggio	nut	97565000	1	3
15	Gleitring	anello a collare	lever collar	97564000	1	1
16	Klammer (2 Stück)	crampo (2 pezzo)	cramp (2 pieces)	97757000	Set	3
17	Laminator	accoppiatrice	laminator	97566000	1	1
18	O-Ring 17x1,5	O-Ring 17x1,5	O-ring 17x1,5	98137000	1	1
19	O-Ring 13x3	O-Ring 13x3	O-ring 13x3	98184000	1	1

hansgrohe

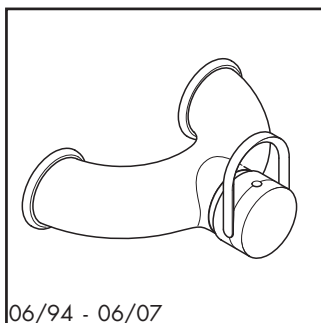
XXX = Oberflächenbezeichnung siehe Seite 10.1 / *die PG ist für die Standardoberfläche, andere Oberflächen sind im Artikelverzeichnis
 XXX = vedere pagina 10.1 per i codici colore/*la categoria prezzo vale per la superficie standard, altre superfici si trovano nell'indice degli articoli
 XXX = Please see page 10.1 for finish indicators / * the PG is for standard colours, PG for other colours are in the Code Numbers

10.5

1/2008

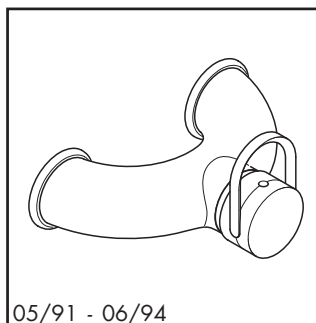
Axor Arco

Brausenmischer / Miscelatore esterno doccia / Shower mixer



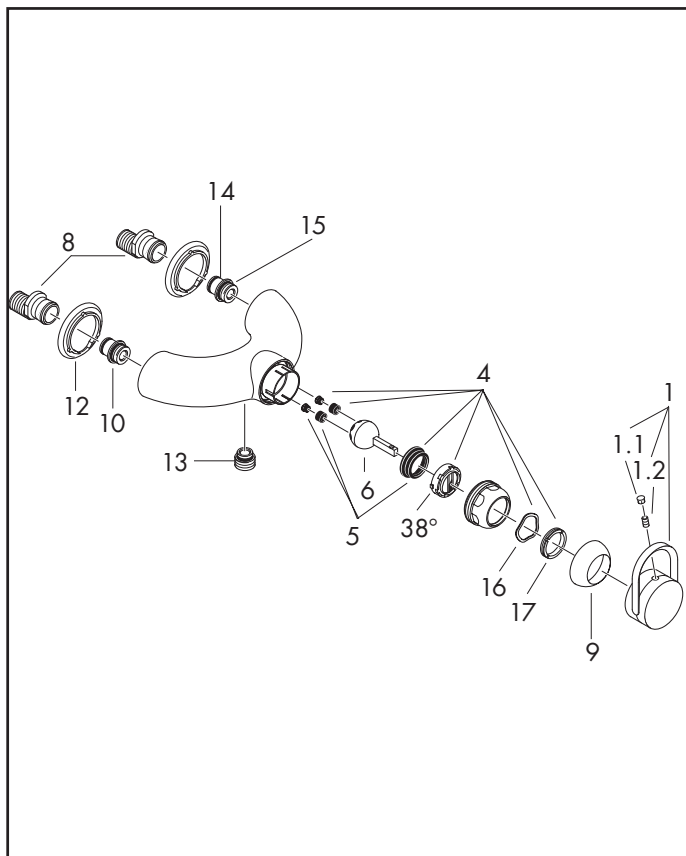
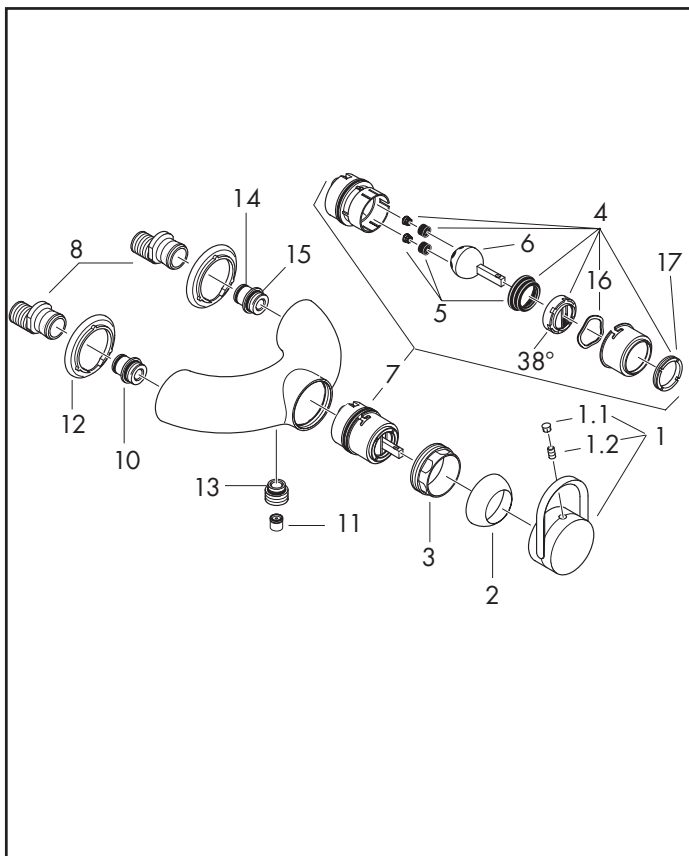
06/94 - 06/07

11600XXX



05/91 - 06/94

11600XXX



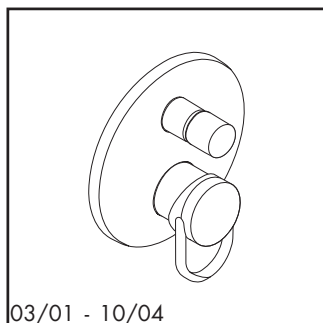
Pos.	Bezeichnung	Descrizione	Description	Nr./Nr./No.	VE	PG
1	Griff Arco	manopola Arco	handle Arco	11691XXX	1	15*
1.1	Griffstopfen	tappino	screw cover	94063XXX	1	3*
1.2	Madenschraube M6x10 DIN 916	vite a perno M6x10 DIN 916	hollow set screw M6x10 DIN 916	96029000	1	1
2	Kappe	cappuccio	flange	94130XXX	1	6*
3	Mutter	ghiera di fissaggio	nut	94106000	1	8
4	Service Set mit Serviceschlüssel	set di servizio con chiave	service set with service tool	13952000	1	9
5	Manschettensatz	gommini e mollette	packing kit	13962000	5	10
6	Steuerkugel o. Mundduscheanschl.	sfera miscelazione non per kit dentale	mixer ball not for mouth spray	13964000	1	10
7	Kartusche kpl.	cartuccia completa	cartridge, assy	14096000	1	14
8	S-Anschlüsse	raccordi eccentrici	ball S - unions	94136000	Set	11
9	Kappe	cappuccio	flange	13987XXX	1	6*
10	Anschlußnippel (2 Stück)	raccordo a vite (2 pezzo)	connecting thread (2 pieces)	97236000	Set	4
11	Rückflußverhinderer DW 15 (2 St.)	valvola antiriflusso DW 15 (2 pezzo)	non return valve DW 15 (2 pieces)	94074000	Set	3
12	Rosette Ø 64 mm	copertura Ø 64 mm	escutcheon Ø 64 mm	96464XXX	1	8*
13	O-Ring 14x2	O-Ring 14x2	O-ring 14x2	98129000	1	1
14	O-Ring 13x3	O-Ring 13x3	O-Ring 13x3	98184000	1	1
15	O-Ring 17x1,5	O-Ring 17x1,5	O-ring 17x1,5	98137000	1	1
16	Warmwasserbegrenzung	limitatore di acqua calda	hot water limiter	97610000	1	2
17	Justiering	anello di regolazione	adjust ring	97547000	1	3

10.6 XXX = Oberflächenbezeichnung siehe Seite 10.1 / *die PG ist für die Standardoberfläche, andere Oberflächen sind im Artikelverzeichnis
 XXX = vedere pagina 10.1 per i codici colore/*la categoria prezzo vale per la superficie standard, altre superfici si trovano nell'indice degli articoli
 1/2008 XXX = Please see page 10.1 for finish indicators / * the PG is for standard colours, PG for other colours are in the Code Numbers

hansgrohe

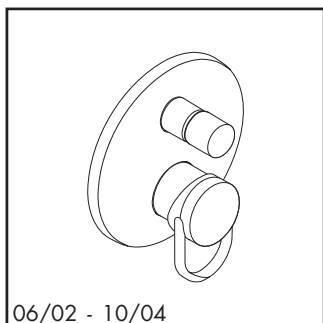
Axor Arco

Wannenmischer / Miscelatore bordo vasca / Bath mixer



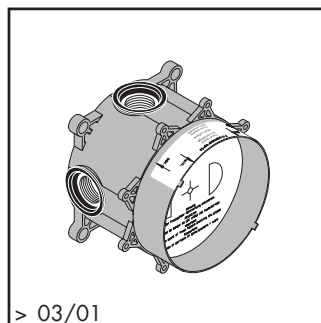
03/01 - 10/04

11415XXX



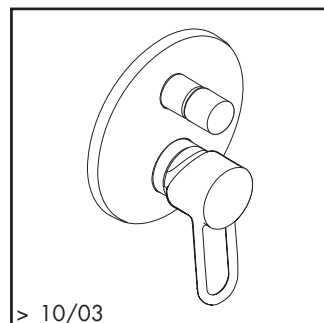
06/02 - 10/04

11417XXX



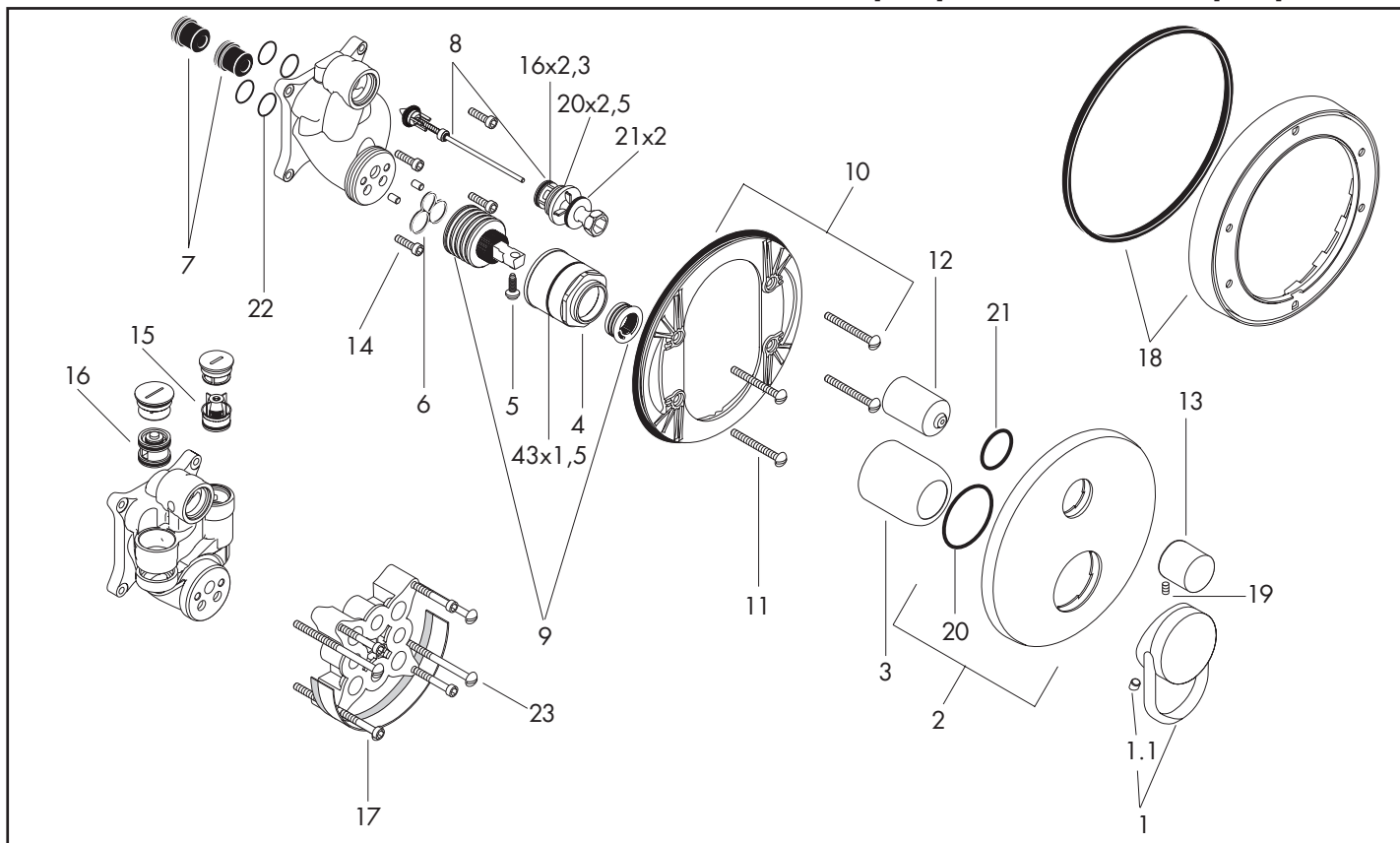
> 03/01

01800180 [45.1]



> 10/03

Axor Uno [19.1]



Pos.	Bezeichnung	Descrizione	Description	Nr./Nr./No.	VE	PG
1	Griff	manopola	handle	11092XXX	1	15*
1.1	Griffstopfen	tappino	screw cover	96338000	1	1
2	Rosette Ø 170 mm	copertura Ø 170 mm	escutcheon Ø 170 mm	96453XXX	1	11*
3	Kugelrosette	cappuccio	flange	95010XXX	1	8*
4	Mutter	ghiera di fissaggio	nut	95007000	1	10
5	Sicherungsschraube	avvitare di sicurezza	locking screw for handle	96059000	1	3
6	Dichtung	guarnizione	seal	95008000	1	3
7	Schalldämpfer (2 Stück)	sorbente acustico (2 pezzo)	noise reduction (2 pieces)	94073000	Set	7
8	Umsteller kpl.	deviatore completo	selector assy	95014000	1	11
	Feder für vertauschte Anschlüsse	molla speciale	spring for exchanged connections	96365000	1	9
9	Kartusche kpl.	cartuccia completa	cartridge, assy	92730000	1	11
10	Trägerrosette	copertura portante	sub plate	96447000	1	4
11	Trägerschrauben (4 Stück)	vite portante (4 pezzo)	fixing screw (4 pieces)	96454000	Set	3
12	Umstellerhülse	cappuccio	sleeve	96448XXX	1	9*
13	Zugknopf	pomello deviatore	diverter knob	96473XXX	1	10*
14	Schraube M5 x 20 (4 Stück)	vite M5 x 20 (4 pezzo)	screw M5 x 20 (4 pieces)	96525000	Set	3
15	Rückflußverhinderer	valvola antiriflusso	non return valve	96655000	1	4
16	Rohrbelüfter	valvola antiriflusso	vacuum breaker	96753000	1	5
17	Verlängerung 25 mm	prolunga 25 mm	extension 25 mm	13595000	1	98
18	Verlängerung 22 mm	prolunga 22 mm	extension 22 mm	13596XXX	1	98
19	Madenschraube M4x10	vite a perno M4x10	hollow set screw M4x10	97667000	1	1
20	O-Ring 26x2	O-Ring 26x2	O-ring 26x2	98147000	1	1
21	O-Ring 30x5	O-Ring 30x5	O-ring 30x5	98153000	1	1
22	O-Ring 13x2	O-Ring 13x2	O-ring 13x2	98128000	1	1
23	Trägerschrauben (4 Stück)	vite portante (4 pezzo)	fixing screw (4 pieces)	97747000	Set	1
	Grundset, Ersatzteile siehe Kap.45	corpo ad incasso, vedere capitolo 45	concealed item, see chapter 45	01800180	1	

hansgrohe

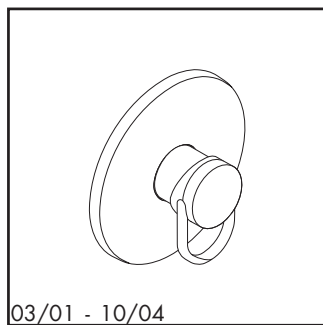
XXX = Oberflächenbezeichnung siehe Seite 10.1 / *die PG ist für die Standardoberfläche, andere Oberflächen sind im Artikelverzeichnis
 XXX = vedere pagina 10.1 per i codici colore/*la categoria prezzo vale per la superficie standard, altre superfici si trovano nell'indice degli articoli
 XXX = Please see page 10.1 for finish indicators / * the PG is for standard colours, PG for other colours are in the Code Numbers

10.7

1/2008

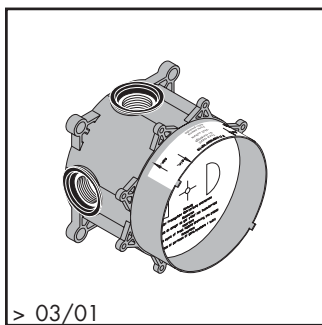
Axor Arco

Brausenmischer / Miscelatore esterno doccia / Shower mixer



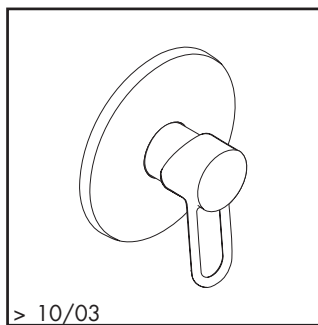
03/01 - 10/04

11615XXX



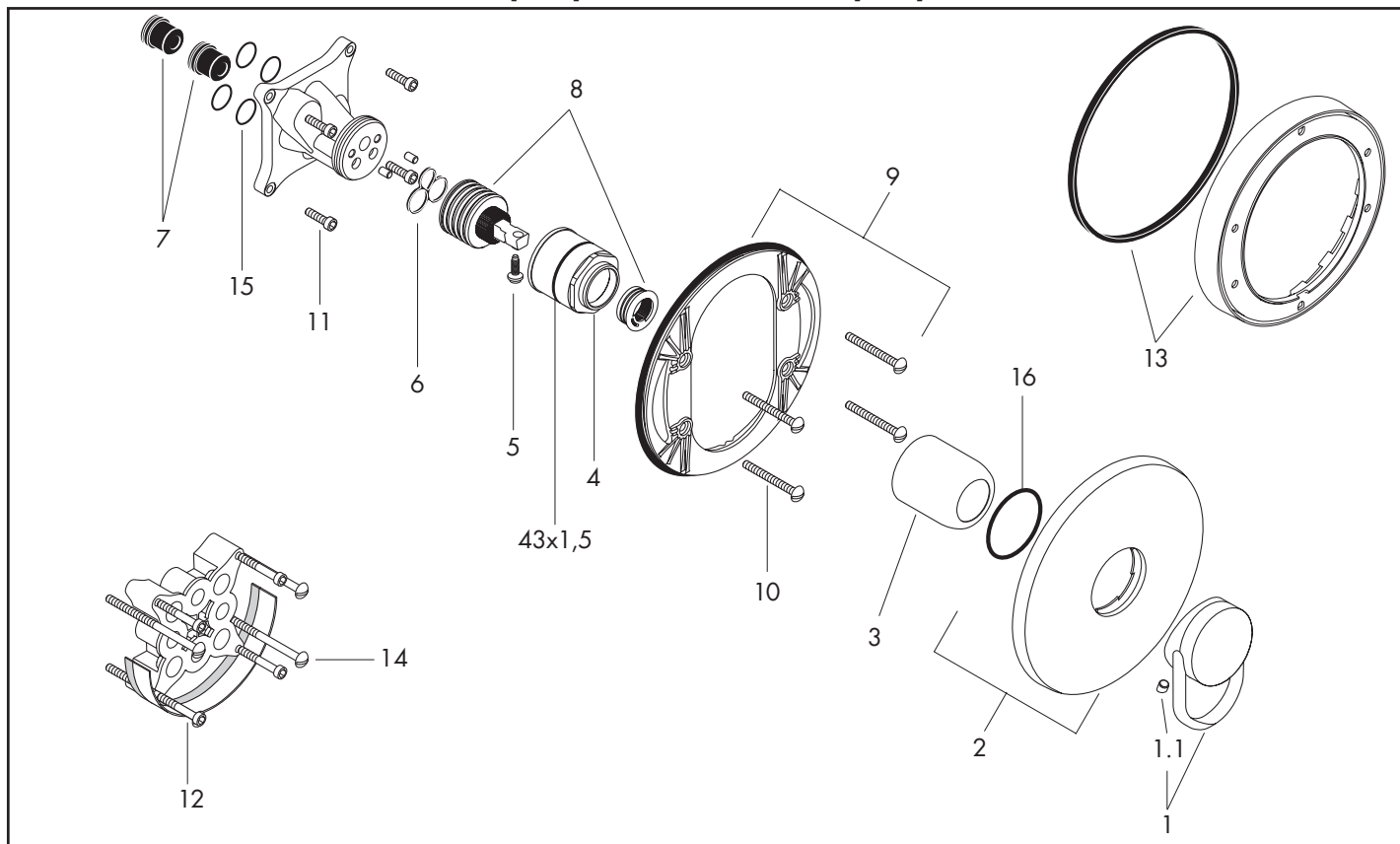
> 03/01

01800180 [45.1]



> 10/03

Axor Uno [19.1]



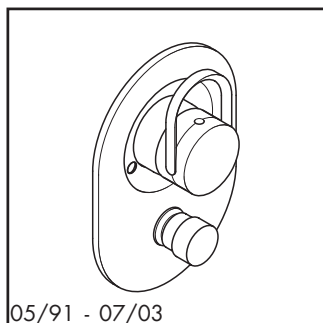
Pos.	Bezeichnung	Descrizione	Description	Nr./Nr./No.	VE	PG
1	Griff	manopola	handle	11092XXX	1	15*
1.1	Griffstopfen	tappino	screw cover	96338000	1	1
2	Rosette Ø 170 mm	copertura Ø 170 mm	escutcheon Ø 170 mm	96452XXX	1	11*
3	Kugelrosette	cappuccio	flange	95010XXX	1	8*
4	Mutter	ghiera di fissaggio	nut	95007000	1	10
5	Sicherungsschraube	avvitare di sicurezza	locking screw for handle	96059000	1	3
6	Dichtung	guarnizione	seal	95008000	1	3
7	Schalldämpfer (2 Stück)	sorbente acustico (2 pezzo)	noise reduction (2 pieces)	94073000	Set	7
8	Kartusche kpl.	cartuccia completa	cartridge, assy	92730000	1	11
9	Trägerrosette	copertura portante	sub plate	96447000	1	4
10	Trägerschrauben (4 Stück)	vite portante (4 pezzo)	fixing screw (4 pieces)	96454000	Set	3
11	Schraube M5 x 20 (4 Stück)	vite M5 x 20 (4 pezzo)	screw M5 x 20 (4 pieces)	96525000	Set	3
12	Verlängerung 25 mm	prolunga 25 mm	extension 25 mm	13595000	1	98
13	Verlängerung 22 mm	prolunga 22 mm	extension 22 mm	13596XXX	1	98
14	Trägerschrauben (4 Stück)	vite portante (4 pezzo)	fixing screw (4 pieces)	97747000	Set	1
15	O-Ring 13x2	O-Ring 13x2	O-ring 13x2	98128000	1	1
16	O-Ring 48x5	O-Ring 48x5	O-ring 48x5	98174000	1	1
	Grundset, Ersatzteile siehe Kap.45	corpo ad incasso, vedere capitolo 45	concealed item, see chapter 45	01800180	1	

10.8 XXX = Oberflächenbezeichnung siehe Seite 10.1 / *die PG ist für die Standardoberfläche, andere Oberflächen sind im Artikelverzeichnis
 XXX = vedere pagina 10.1 per i codici colore/*la categoria prezzo vale per la superficie standard, altre superfici si trovano nell'indice degli articoli
 1/2008 XXX = Please see page 10.1 for finish indicators / * the PG is for standard colours, PG for other colours are in the Code Numbers

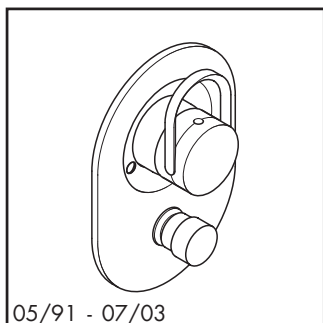
hansgrohe

Axor Arco

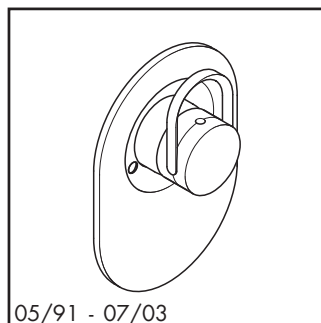
Wannen- / Brausenmischer / Miscelatore vasca / doccia / Bath-shower mixer



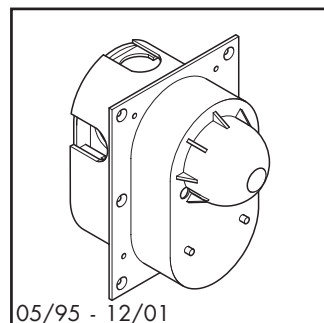
05/91 - 07/03
11405XXX



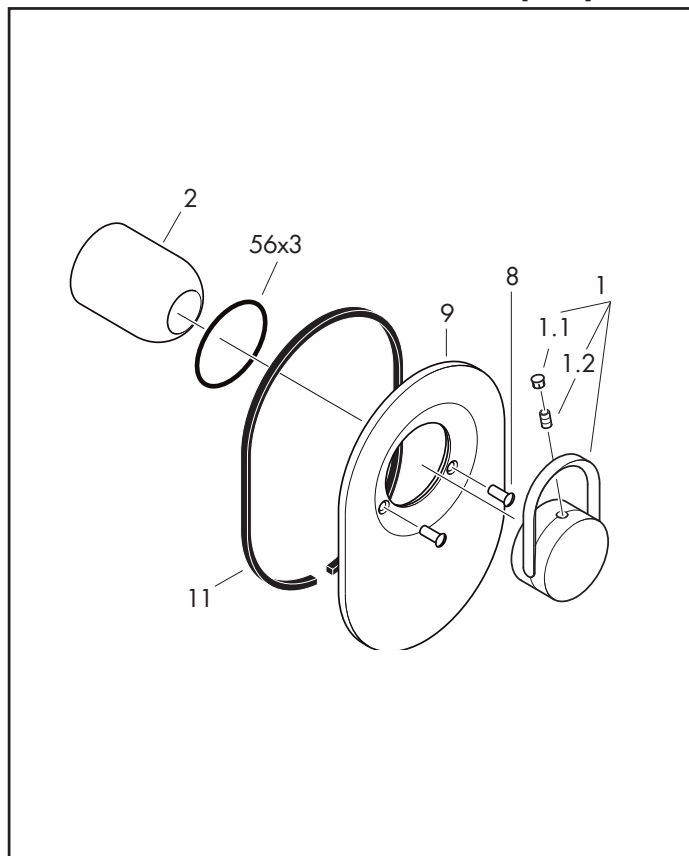
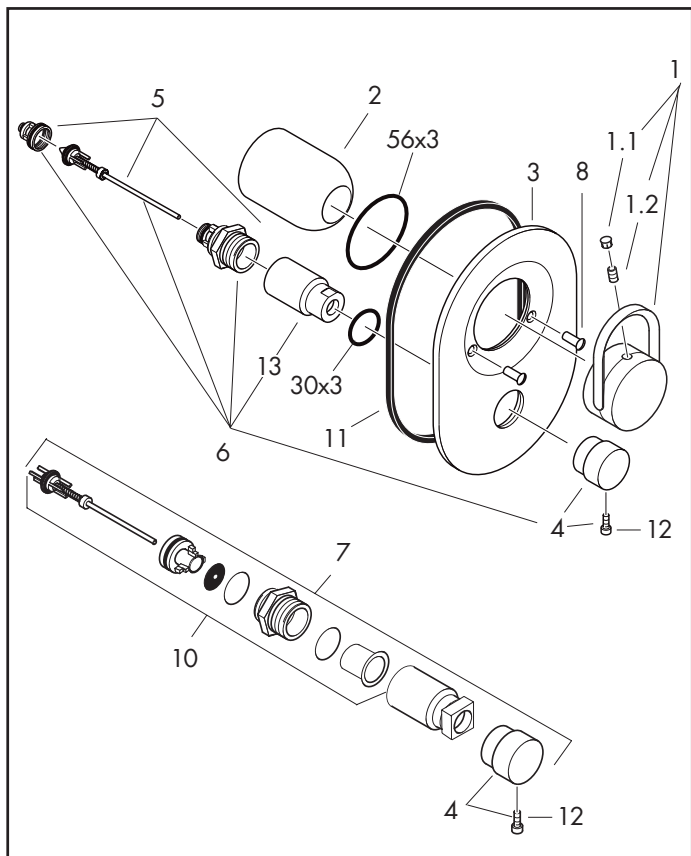
05/91 - 07/03
11409XXX



05/91 - 07/03
11605XXX



05/95 - 12/01
13505180 [45.1]



Pos.	Bezeichnung	Descrizione	Description	Nr./Nr./No.	VE	PG
1	Griff Arco	manopola Arco	handle Arco	11691XXX	1	15*
1.1	Griffstopfen	tappino	screw cover	94063XXX	1	3*
1.2	Madenschraube M6x10 DIN 916	vite a perno M6x10 DIN 916	hollow set screw M6x10 DIN 916	96029000	1	1
2	Kugelrosette	cappuccio	flange	13981XXX	1	10*
3	Rosette Wannenmischer	copertura miscelatore vasca	escutcheon bath/shower mixer	94270XXX	1	12*
4	Zugknopf kpl.	pomello deviatore compl.	diverter knob cpl.	13471XXX	1	6*
5	Umsteller	deviatore	selector	13970000	1	12
6	Umsteller kpl. mit Hülse u. Zugknopf	deviatore con pomello	diverter assy with sleeve and handle	13971XXX	1	13*
7	Umsteller mit Rohrunterbrecher kpl.	deviatore con valvola antiriflusso cpl.	selector with vacuum breaker assy	13473XXX	1	14*
8	Hohlschraube (2 Stück)	vite di fissaggio (2 pezzo)	hollow screw (2 pieces)	96065XXX	Set	2*
9	Rosette Brausenmischer	copertura miscelatore doccia	escutcheon shower mixer	94272XXX	1	12*
10	Umsteller mit Rohrunterbrecher	deviatore con valvola antiriflusso	selector with vacuum breaker	13479000	1	11
11	Dichtung	guarnizione	seal	97754000	1	1
12	Zylinderschraube M4x10	vite a testa cilindrica M4x10	hexagon socket screw M4x10	97661000	1	2
13	Hülse	cappuccio	sleeve	97556XXX	1	8*
	Umrüstset für Wannenmischer (Kugelmischtechnik -> Keramikkartusche)	set di adeguamento per miscelatore vasca (tecnica di miscelazione a sfera -> cartuccia ceramica)	conversion kit for bath mixer (ball mixing system -> cartridge with ceramic mixing system)	96385XXX	1	21*
	Umrüstset für Wannenmischer mit Rohrunterbrecher (Kugelmischtechnik -> Keramikkartusche)	set di adeguamento per miscelatore vasca con valvola antiriflusso (tecnica di miscelazione a sfera -> cartuccia ceramica)	conversion kit for bath mixer with vacuum breaker (ball mixing system -> cartridge with ceramic mixing system)	97111XXX	1	22*
	Umrüstset für Brausenmischer (Kugelmischtechnik -> Keramikkartusche)	set di adeguamento per miscelatore doccia (tecnica di miscelazione a sfera -> cartuccia ceramica)	conversion kit for shower mixer (ball mixing system -> cartridge with ceramic mixing system)	96384XXX	1	20*
	Grundset, Ersatzteile siehe Kap.45	corpo ad incasso, vedere capitolo 45	concealed item, see chapter 45	13505180	1	

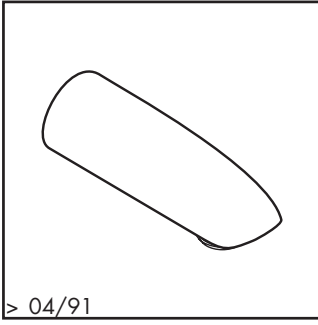
hansgrohe

XXX = Oberflächenbezeichnung siehe Seite 10.1 / *die PG ist für die Standardoberfläche, andere Oberflächen sind im Artikelverzeichnis
 XXX = vedere pagina 10.1 per i codici colore/*la categoria prezzo vale per la superficie standard, altre superfici si trovano nell'indice degli articoli
 XXX = Please see page 10.1 for finish indicators / * the PG is for standard colours, PG for other colours are in the Code Numbers

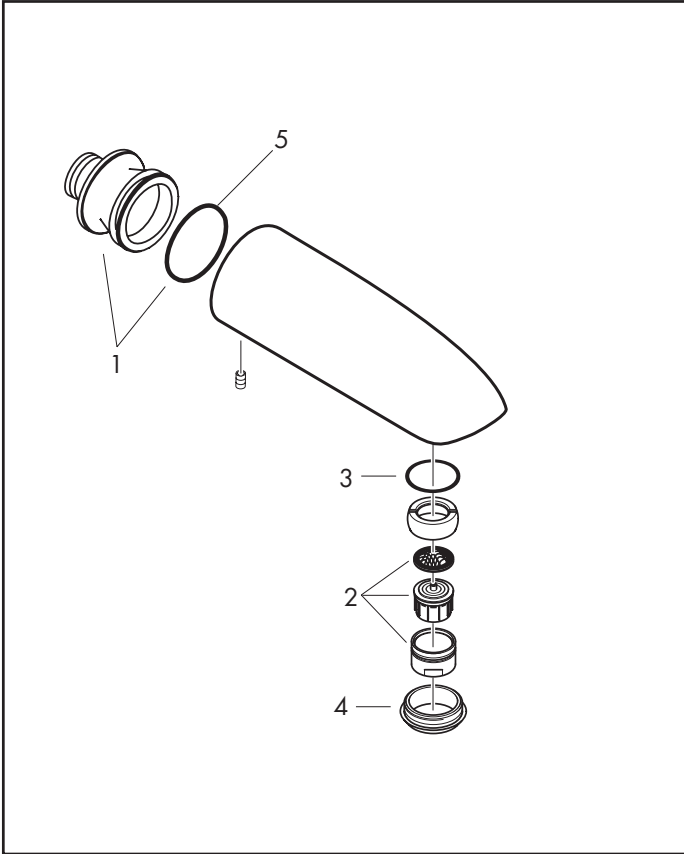
10.9
1/2008

Axor

Wanneneinlauf / Bocca di erogazione vasca / Bath filler



11410XXX



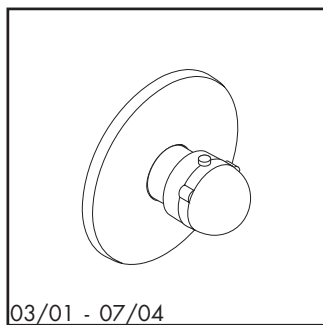
Pos.	Bezeichnung	Descrizione	Description	Nr./Nr./No.	VE	PG
1	Anschlußnippel	raccordo a vite	connecting thread	96455000	1	9
2	Luftsprudler M28x1 B	rompigetto M28x1 B	aerator M28x1 B	13485XXX	1	6*
3	O-Ring 32,5x2,2	O-Ring 32,5x2,2	O-ring 32,5x2,2	94485000	1	2
4	Mutter	ghiera di fissaggio	nut	96438000	1	4
5	O-Ring 39x3,5	O-Ring 39x3,5	O-ring 39x3,5	98159000	1	1

10.10XXX = Oberflächenbezeichnung siehe Seite 10.1 / *die PG ist für die Standardoberfläche, andere Oberflächen sind im Artikelverzeichnis
 XXX = vedere pagina 10.1 per i codici colore/*la categoria prezzo vale per la superficie standard, altre superfici si trovano nell'indice degli articoli
 1/2008 XXX = Please see page 10.1 for finish indicators / * the PG is for standard colours, PG for other colours are in the Code Numbers

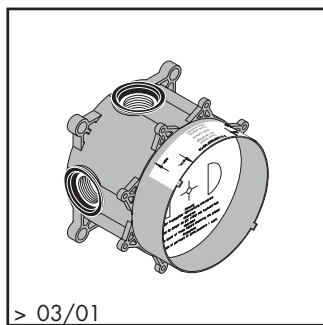
hansgrohe

Axor Arco

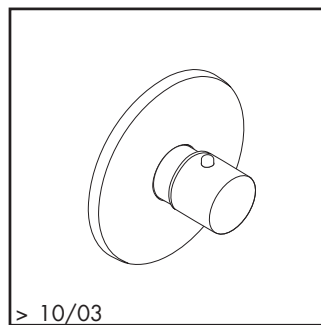
Thermostat / Miscelatore termostatico / Thermostatic mixer



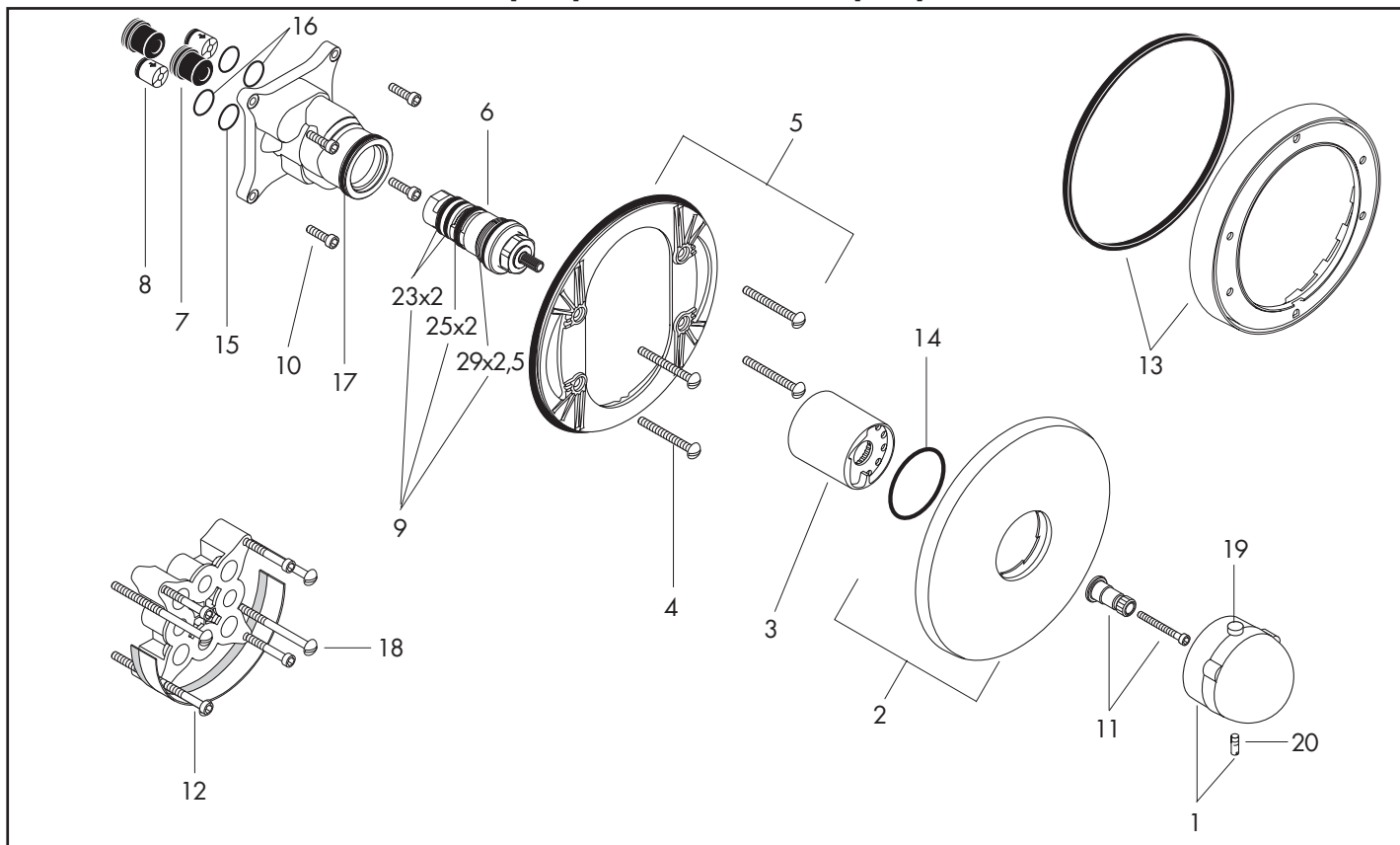
11710XXX



01800180 [45.1]



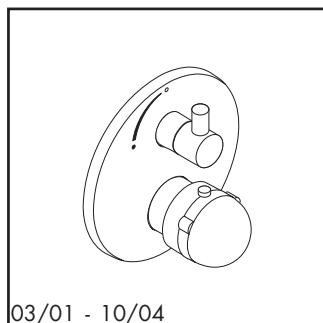
Axor Uno [19.1]



Pos.	Bezeichnung	Descrizione	Description	Nr./Nr./No.	VE	PG
1	Thermostatgriff	manopola termostatico	handle for thermostat	16391XXX	1	11*
2	Rosette Ø 170 mm	copertura Ø 170 mm	escutcheon Ø 170 mm	96452XXX	1	11*
3	Hülse	cappuccio	sleeve	96439XXX	1	9*
4	Trägerschrauben (4 Stück)	vite portante (4 pezzo)	fixing screw (4 pieces)	96454000	Set	3
5	Trägerrossette	copertura portante	sub plate	96447000	1	4
6	Temperatur Regeleinheit	elemento termostatico	thermostat cartridge	94282000	1	15
7	Schalldämpfer (2 Stück)	sorbente acustico (2 pezzo)	noise reduction (2 pieces)	94073000	Set	7
8	Rückflußverhinderer DW 15 (2 St.)	valvola antiriflusso DW 15 (2 pezzo)	non return valve DW 15 (2 pieces)	94074000	Set	3
9	Dichtungsset	set di guarnizioni	sealing set	95037000	1	10
10	Schraube M5 x 20 (4 Stück)	vite M5 x 20 (4 pezzo)	screw M5 x 20 (4 pieces)	96525000	Set	3
11	Griffadapter	adattatore per manopola	adapter for handle	96435000	1	6
12	Verlängerung 25 mm	prolunga 25 mm	extension 25 mm	13595000	1	98
13	Verlängerung 22 mm	prolunga 22 mm	extension 22 mm	13596XXX	1	98
14	O-Ring 48x5	O-Ring 48x5	O-ring 48x5	98174000	1	1
15	O-Ring 13x2	O-Ring 13x2	O-ring 13x2	98128000	1	1
16	O-Ring 16x2	O-Ring 16x2	O-ring 16x2	98133000	1	1
17	O-Ring 39x2	O-Ring 39x2	O-ring 39x2	98158000	1	1
18	Trägerschrauben (4 Stück)	vite portante (4 pezzo)	fixing screw (4 pieces)	97747000	Set	1
19	Druckknopf rot	tasto rosso	pushbutton red	97212000	1	7
20	Madenschraube M5x16	vite a perno M5x16	hollow set screw M5x16	97666000	1	1
	Grundset, Ersatzteile siehe Kap.45	corpo ad incasso, vedere capitolo 45	concealed item, see chapter 45	01800180	1	

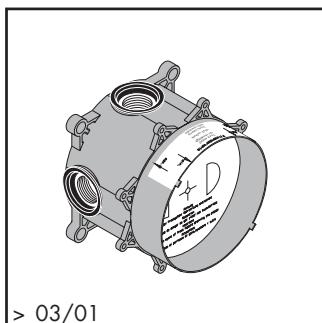
Axor Arco

Thermostat mit Absperrventil / Termostatico con rubinetto di arresto / Thermostatic mixer with shut off unit



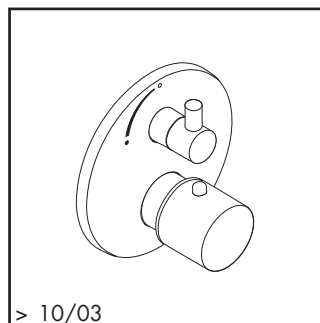
03/01 - 10/04

11700XXX



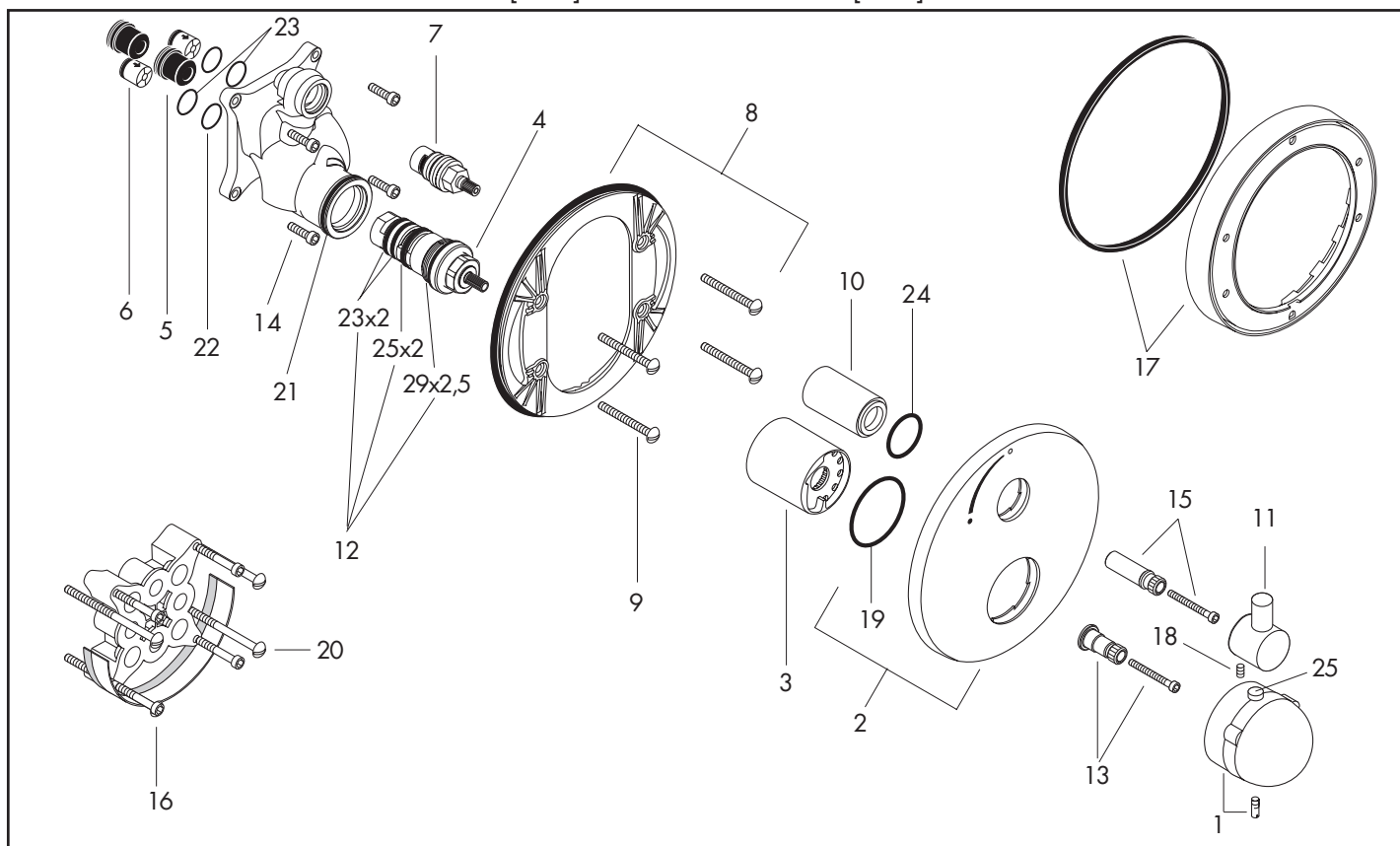
> 03/01

01800180 [45.1]



> 10/03

Axor Uno [19.1]



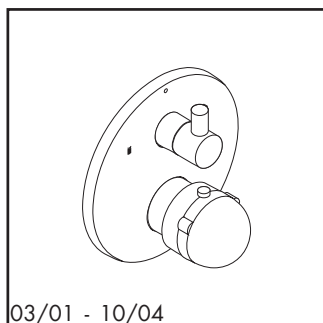
Pos.	Bezeichnung	Descrizione	Description	Nr./Nr./No.	VE	PG
1	Thermostatgriff	manopola termostatico	handle for thermostat	16391XXX	1	11*
2	Rosette Ø 170 mm	copertura Ø 170 mm	escutcheon Ø 170 mm	96551XXX	1	11*
3	Hülse	cappuccio	sleeve	96439XXX	1	9*
4	Temperatur Regeleinheit	elemento termostatico	thermostat cartridge	94282000	1	15
5	Schalldämpfer (2 Stück)	sorbente acustico (2 pezzo)	noise reduction (2 pieces)	94073000	Set	7
6	Rückflußverhinderer DW 15 (2 St.)	valvola antiriflusso DW 15 (2 pezzo)	non return valve DW 15 (2 pieces)	94074000	Set	3
7	Absperrereinheit rechts schließend	cartuccia conclude a destra	shut off unit right closing	94009000	1	9
8	Trägerrossette	copertura portante	sub plate	96447000	1	4
9	Trägerschrauben (4 Stück)	vite portante (4 pezzo)	fixing screw (4 pieces)	96454000	Set	3
10	Hülse	cappuccio	sleeve	96446XXX	1	8*
11	Griff	manopola	handle	96421XXX	1	11*
12	Dichtungsset	set di guarnizioni	sealing set	95037000	1	10
13	Griffadapter	adattatore per manopola	adapter for handle	96435000	1	6
14	Schraube M5 x 20 (4 Stück)	vite M5 x 20 (4 pezzo)	screw M5 x 20 (4 pieces)	96525000	Set	3
15	Griffadapter	adattatore per manopola	adapter for handle	96451000	1	5
16	Verlängerung 25 mm	prolunga 25 mm	extension 25 mm	13595000	1	98
17	Verlängerung 22 mm	prolunga 22 mm	extension 22 mm	13596XXX	1	98
18	Madenschraube M4x8	vite a perno M4x8	hollow set screw M4x8	97669000	1	1
19	O-Ring 48x5	O-Ring 48x5	O-ring 48x5	98174000	1	1
20	Trägerschrauben (4 Stück)	vite portante (4 pezzo)	fixing screw (4 pieces)	97747000	Set	1
21	O-Ring 39x2	O-Ring 39x2	O-ring 39x2	98158000	1	1
22	O-Ring 13x2	O-Ring 13x2	O-ring 13x2	98128000	1	1
23	O-Ring 16x2	O-Ring 16x2	O-ring 16x2	98133000	1	1
24	O-Ring 30x5	O-Ring 30x5	O-ring 30x5	98153000	1	1
25	Druckknopf rot	tasto rosso	pushbutton red	97212000	1	7
	Grundset, Ersatzteile siehe Kap.45	corpo ad incasso, vedere capitolo 45	concealed item, see chapter 45	01800180	1	

10.12 XXX = Oberflächenbezeichnung siehe Seite 10.1 / *die PG ist für die Standardoberfläche, andere Oberflächen sind im Artikelverzeichnis
 XXX = vedere pagina 10.1 per i codici colore/*la categoria prezzo vale per la superficie standard, altre superfici si trovano nell'indice degli articoli
 1/2008 XXX = Please see page 10.1 for finish indicators / * the PG is for standard colours, PG for other colours are in the Code Numbers

hansgrohe

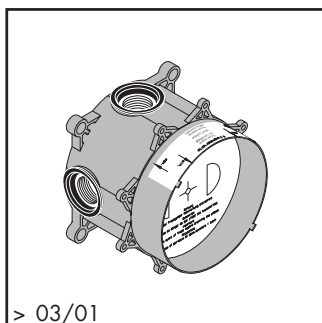
Axor Arco

Thermostat mit Absperr- und Umstellventil / Termostatico con rubinetto di arresto e deviatore /
Thermostatic mixer with shut off and diverter unit



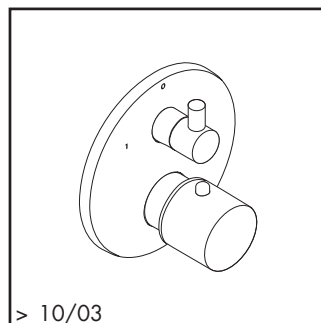
03/01 - 10/04

11720XXX



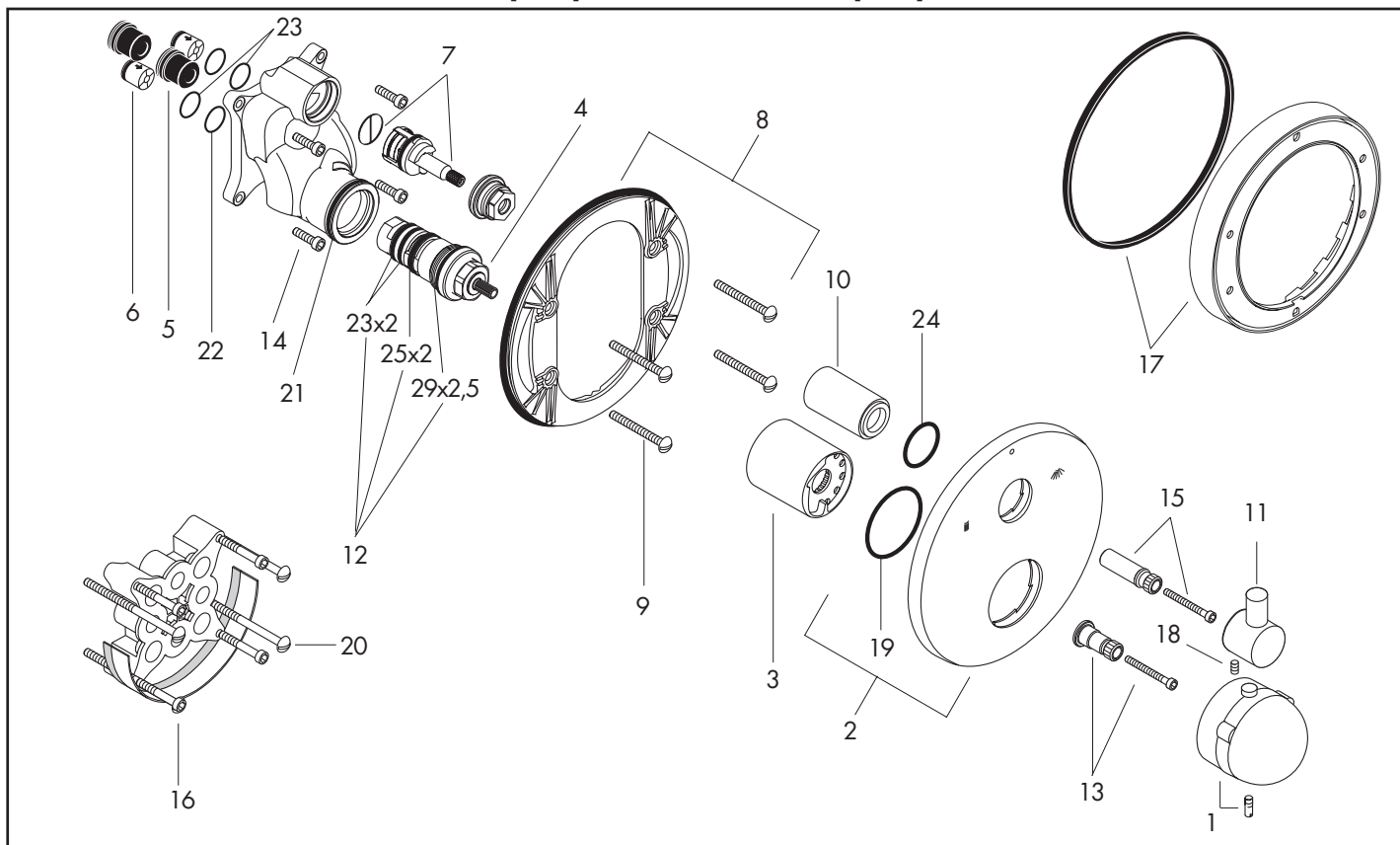
> 03/01

01800180 [45.1]



> 10/03

Axor Uno [19.1]



Pos.	Bezeichnung	Descrizione	Description	Nr./Nr./No.	VE	PG
1	Thermostatgriff	manopola termostatico	handle for thermostat	16391XXX	1	11*
2	Rosette Ø 170 mm	copertura Ø 170 mm	escutcheon Ø 170 mm	96552XXX	1	12*
	Rosette für vertauschte Anschlüsse	copertura speciale	escutcheon for exchanged connections	97193XXX	1	11*
3	Hülse	cappuccio	sleeve	96439XXX	1	9*
4	Temperatur Regeleinheit	elemento termostatico	thermostat cartridge	94282000	1	15
5	Schalldämpfer (2 Stück)	sorbente acustico (2 pezzo)	noise reduction (2 pieces)	94073000	Set	7
6	Rückflußverhinderer DW 15 (2 St.)	valvola antiriflusso DW 15 (2 pezzo)	non return valve DW 15 (2 pieces)	94074000	Set	3
7	Absperrereinheit inkl. Umsteller	vitone con deviatore	shut off unit with selector	96509000	1	13
8	Trägerrosette	copertura portante	sub plate	96447000	1	4
9	Trägerschrauben (4 Stück)	vite portante (4 pezzo)	fixing screw (4 pieces)	96454000	Set	3
10	Hülse	cappuccio	sleeve	96446XXX	1	8*
11	Griff	manopola	handle	96421XXX	1	11*
12	Dichtungsset	set di guarnizioni	sealing set	95037000	1	10
13	Griffadapter	adattatore per manopola	adapter for handle	96435000	1	6
14	Schraube M5 x 20 (4 Stück)	vite M5 x 20 (4 pezzo)	screw M5 x 20 (4 pieces)	96525000	Set	3
15	Griffadapter	adattatore per manopola	adapter for handle	96451000	1	5
16	Verlängerung 25 mm	prolunga 25 mm	extension 25 mm	13595000	1	98
17	Verlängerung 22 mm	prolunga 22 mm	extension 22 mm	13596XXX	1	98
18	Madenschraube M4x8	vite a perno M4x8	hollow set screw M4x8	97669000	1	1
19	O-Ring 48x5	O-Ring 48x5	O-ring 48x5	98174000	1	1
20	Trägerschrauben (4 Stück)	vite portante (4 pezzo)	fixing screw (4 pieces)	97747000	Set	1
21	O-Ring 39x2	O-Ring 39x2	O-ring 39x2	98158000	1	1
22	O-Ring 13x2	O-Ring 13x2	O-ring 13x2	98128000	1	1
23	O-Ring 16x2	O-Ring 16x2	O-ring 16x2	98133000	1	1
24	O-Ring 30x5	O-Ring 30x5	O-ring 30x5	98153000	1	1
	Grundset, Ersatzteile siehe Kap.45	corpo ad incasso, vedere capitolo 45	concealed item, see chapter 45	01800180	1	

hansgrohe

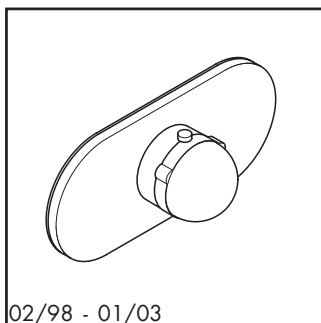
XXX = Oberflächenbezeichnung siehe Seite 10.1 / *die PG ist für die Standardoberfläche, andere Oberflächen sind im Artikelverzeichnis
XXX = vedere pagina 10.1 per i codici colore/*la categoria prezzo vale per la superficie standard, altre superfici si trovano nell'indice degli articoli
XXX = Please see page 10.1 for finish indicators / * the PG is for standard colours, PG for other colours are in the Code Numbers

10.13

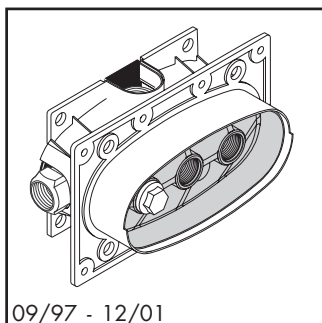
1/2008

Axor Arco

Ecostat ibox



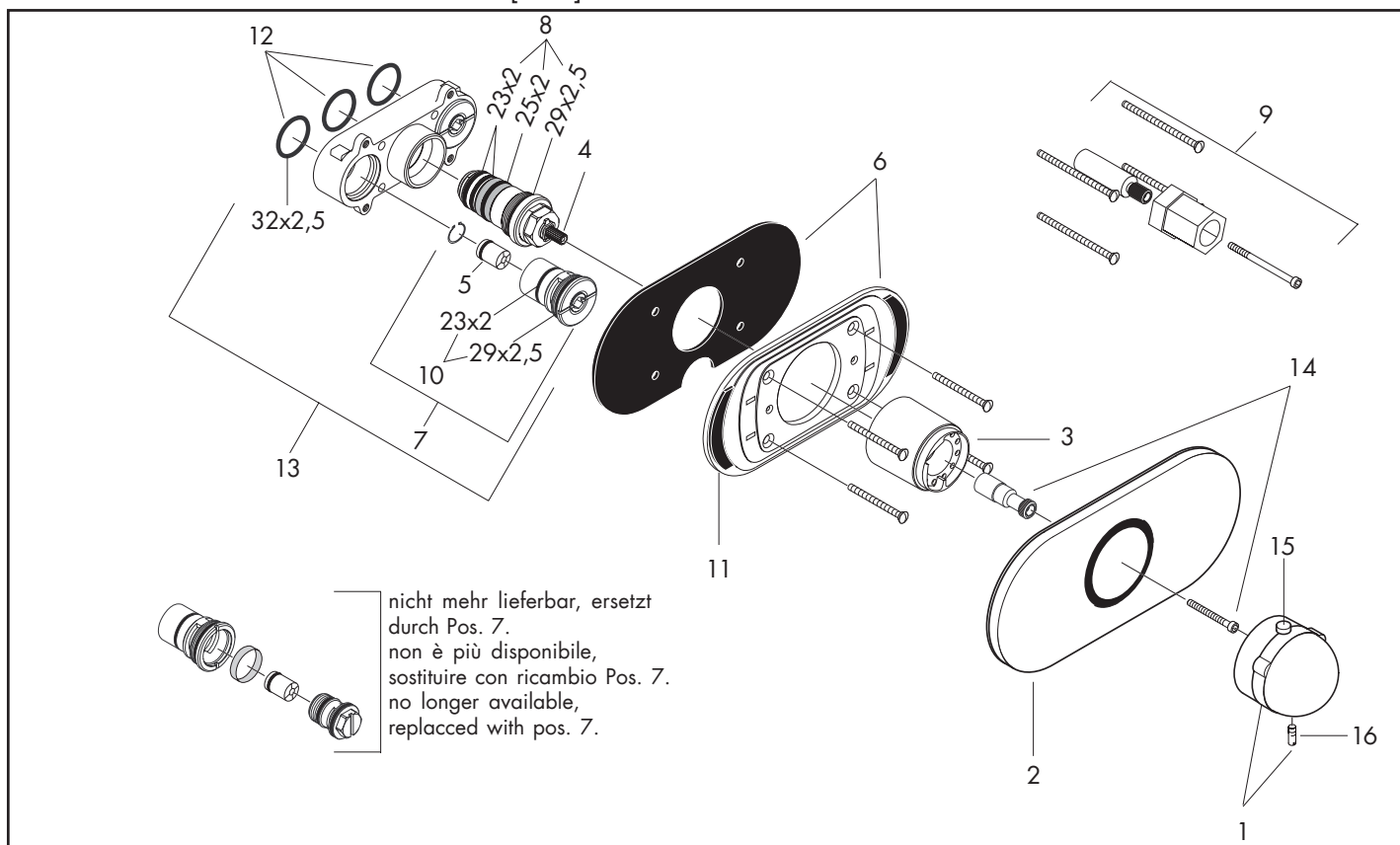
02/98 - 01/03



09/97 - 12/01

11375XXX

15373180 [50.1]



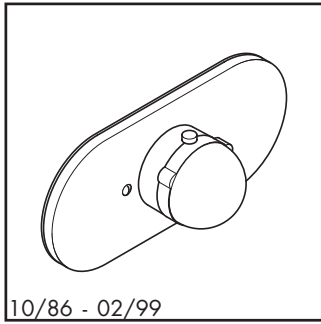
Pos.	Bezeichnung	Descrizione	Description	Nr./Nr./No.	VE	PG
1	Thermostatgriff	manopola termostatico	handle for thermostat	16391XXX	1	11*
2	Rosette	copertura	escutcheon	95028XXX	1	14*
3	Hülse	cappuccio	sleeve	95032XXX	1	9*
4	Temperatur Regeleinheit	elemento termostatico	thermostat cartridge	94282000	1	15
5	Rückflußverhinderer DW 16	valvola antiriflusso DW 16	non return valve DW 16	95033000	1	3
6	Trägerrosette	copertura portante	sub plate	97224000	1	10
7	Serviceventil	valvola di servizio	service valve	95036000	1	11
8	Dichtungsset	set di guarnizioni	sealing set	95037000	1	10
9	Verlängerung 40 mm	prolunga 40 mm	extension set 40 mm	92615000	1	10
10	Dichtungsset	set di guarnizioni	sealing set	96353000	1	3
11	Klebe pads (2 Stück)	piastre di fissaggio (2 pezzo)	adhesive strip (2 pieces)	96234000	Set	3
12	Dichtungsset	set di guarnizioni	sealing set	96364000	1	7
13	Funktionsblock kpl.	blocco funzione compl.	installation unit cpl.	96787000	1	18
14	Griffadapter	adattatore per manopola	adapter for handle	97108000	1	6
15	Druckknopf rot	tasto rosso	pushbutton red	97212000	1	7
16	Madenschraube M5x16	vite a perno M5x16	hollow set screw M5x16	97666000	1	1
	ibox Thermostat DN 15 (1/2"), Ersatzteile siehe Kap. 50	miscelatore termostatico, verdere capitolo 50	ibox thermostatic mixer, see chapter 50	15373180	1	
	ibox Thermostat DN 20 (3/4"), Ersatzteile siehe Kap. 50	miscelatore termostatico, verdere capitolo 50	ibox thermostatic mixer, see chapter 50	15374180	1	

10.14 XXX = Oberflächenbezeichnung siehe Seite 10.1 / *die PG ist für die Standardoberfläche, andere Oberflächen sind im Artikelverzeichnis
XXX = vedere pagina 10.1 per i codici colore/*la categoria prezzo vale per la superficie standard, altre superfici si trovano nell'indice degli articoli
1/2008 XXX = Please see page 10.1 for finish indicators / * the PG is for standard colours, PG for other colours are in the Code Numbers

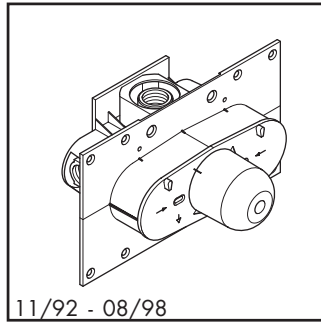
hansgrohe

Axor Arco / Axor Allegroh

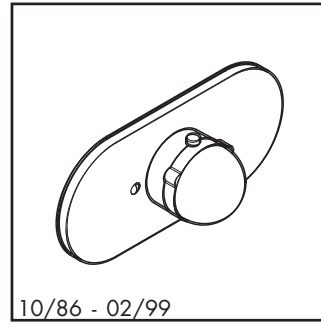
Thermostat / Miscelatore termostatico / Thermostatic mixer



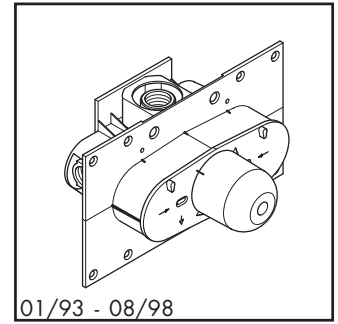
10/86 - 02/99
16376XXX DN 15 (1/2")



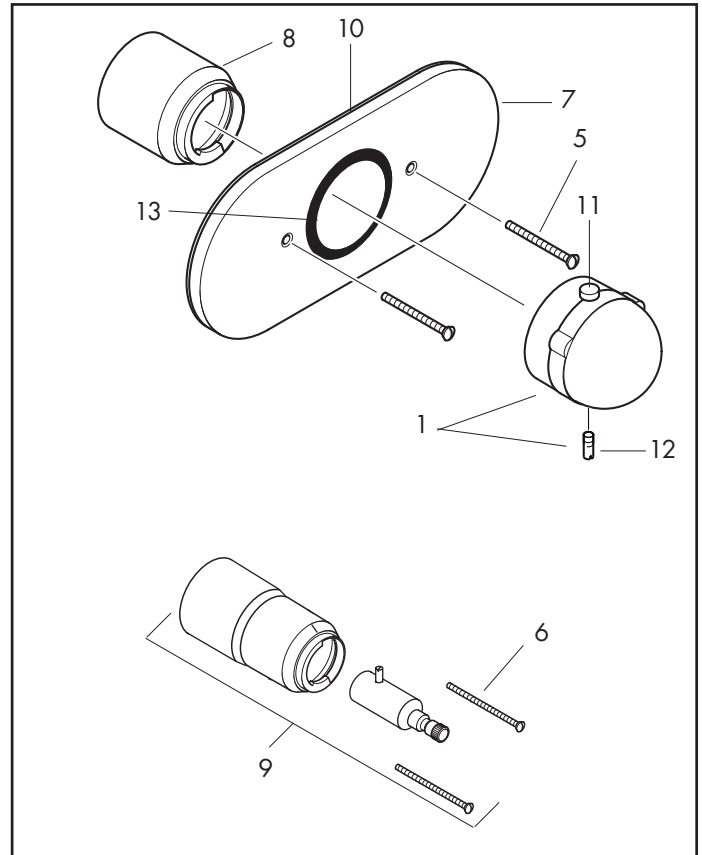
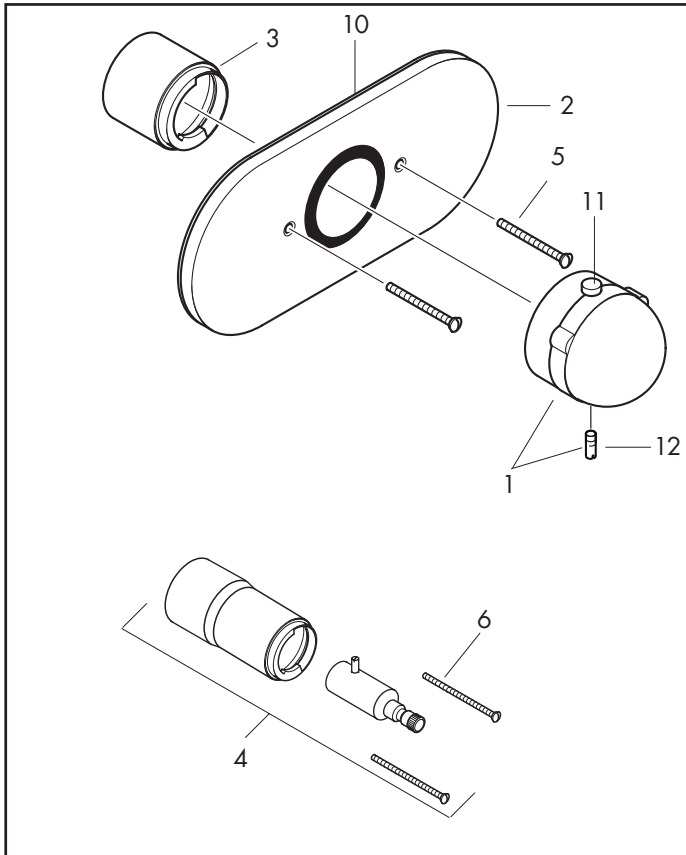
11/92 - 08/98
13373180 [50.1]



10/86 - 02/99
16378XXX DN 20 (3/4")



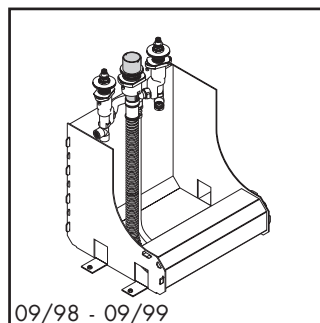
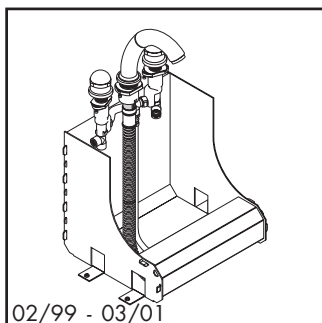
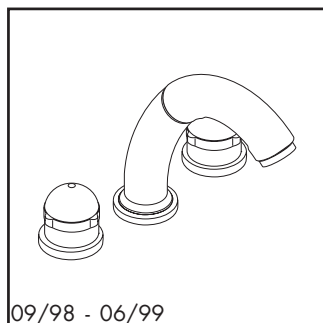
01/93 - 08/98
13374180 [50.1]



Pos.	Bezeichnung	Descrizione	Description	Nr./Nr./No.	VE	PG
1	Thermostatgriff	manopola termostatico	handle for thermostat	16391XXX	1	11*
2	Rosette DN15 (1/2")	copertura (1/2")	escutcheon (1/2")	94351XXX	1	14*
3	Hülse DN15 (1/2")	cappuccio (1/2")	sleeve (1/2")	92652XXX	1	9*
4	Verlängerung DN15 (1/2") 40 mm	prolunga (1/2") 40 mm	extension set (1/2") 40 mm	92610XXX	1	14*
5	Linsensenkschraube 50 mm (2 Stück)	vite a testa piana 50 mm (2 pezzo)	countersunk screw 50 mm (2 pieces)	96096XXX	Set	1*
6	Linsensenkschraube 90 mm (2 Stück)	vite a testa piana 90 mm (2 pezzo)	countersunk screw 90 mm (2 pieces)	96098XXX	Set	1*
7	Rosette DN20 (3/4")	copertura (3/4")	escutcheon (3/4")	94352XXX	1	14*
8	Hülse DN20 (3/4")	cappuccio (3/4")	sleeve (3/4")	92653XXX	1	9*
9	Verlängerung DN20 (3/4") 40 mm	prolunga (3/4") 40 mm	extension set (3/4") 40 mm	92640XXX	1	14*
10	Dichtung	guarnizione	seal	97741000	1	5
11	Druckknopf rot	tasto rosso	pushbutton red	97212000	1	7
12	Madenschraube M5x16	vite a perno M5x16	hollow set screw M5x16	97666000	1	1
13	Dichtung	guarnizione	seal	97752000	1	1
	ibox Thermostat DN 15 (1/2"), Ersatzteile siehe Kap. 50	miscelatore termostatico, vedere capitolo 50	ibox thermostatic mixer, see chapter 50	13373180	1	
	ibox Thermostat DN 20 (3/4"), Ersatzteile siehe Kap. 50	miscelatore termostatico, vedere capitolo 50	ibox thermostatic mixer, see chapter 50	13374180	1	

Axor Arco

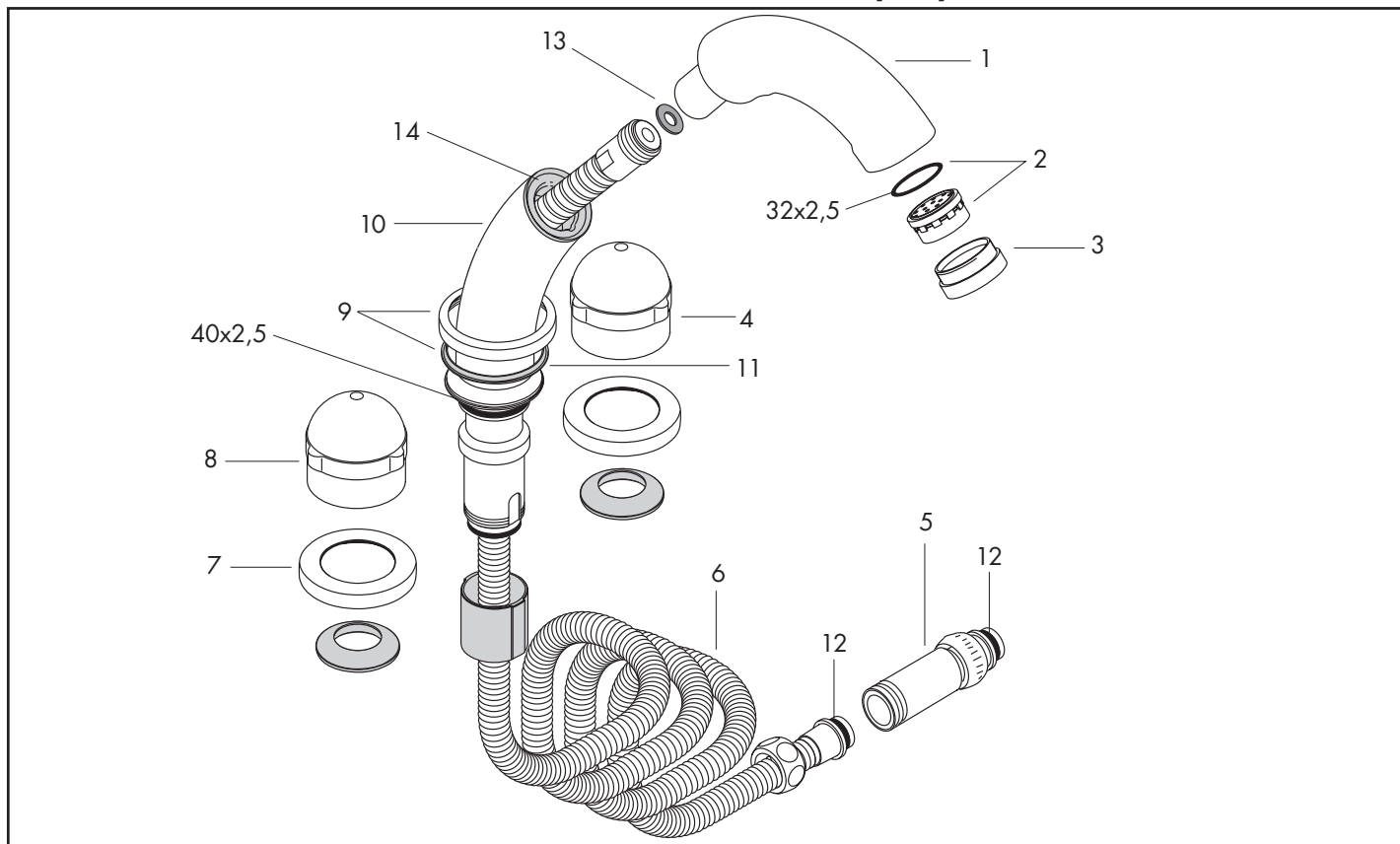
3-Loch-Armatur Wannenrand / Combinazione kombi 3 fori bordo vasca / 3-Hole bath mixer for bath tub



11333XXX

11334XXX

14433180 [47.1]



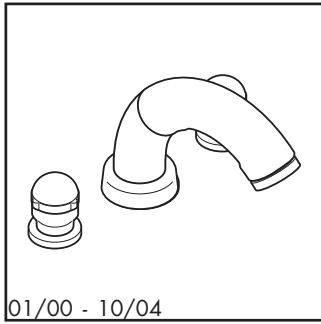
Pos.	Bezeichnung	Descrizione	Description	Nr./Nr./No.	VE	PG
1	Kombi-Auslauf	bocca erogazione Kombi	combination spout	94120XXX	1	18*
2	Luftsprudler kpl.	rompigetto compl.	aerator cpl.	94131000	1	7
3	Haltering	fissaggio per rompigetto	aerator housing	96084XXX	1	7*
4	Griff Kaltwasserseite	manopola acqua fredda	handle for cold water	94113XXX	1	11*
5	Rückflußverhindererpatrone	riduttore di flusso	back flow preventor cartridge	94146000	1	8
6	Brauseschlauch	flessibile	shower hose	94129000	1	13
7	Rosette Ø 70 mm	copertura Ø 70 mm	escutcheon Ø 70 mm	96236XXX	1	9*
8	Griff Warmwasserseite	manopola acqua calda	handle for hot water	94114XXX	1	11*
9	Rosette für Brausehalter	rosetta per supporto doccia	escutcheon for shower holder	96237XXX	1	9*
10	Auslauf	bocca erogazione	spout	96235XXX	1	17*
11	Rosettenfutter	mandrino per rosetta	escutcheon chuck	97105000	1	3
12	O-Ring 11x2 (2 Stück)	O-Ring 11x2 (2 pezzo)	O-ring 11x2 (2 pieces)	98127000	Set	1
13	Flachdichtung	guarnizione piatta	flat seal	97674000	1	1
14	Schlauchfutter für Brausehalter	mandrino per supporto doccia	insert for shower holder	97746000	1	3
	SECUFLEX + Brauseschlauch lang (max. Auszugslänge 1,40 m)	SECUFLEX flessibile + flessibile lungo (max. estens. 1,40 m)	SECUFLEX hose + long hose (max. extension 1,40 m)	94147000	1	21
	Grundset 3-Loch-Wannenrand, Ersatzteile siehe Kap. 47	corpo ad incasso, vedere capitolo 47	concealed items, see chapter 47	14433180	1	

10.16 XXX = Oberflächenbezeichnung siehe Seite 10.1 / *die PG ist für die Standardoberfläche, andere Oberflächen sind im Artikelverzeichnis
 XXX = vedere pagina 10.1 per i codici colore/*la categoria prezzo vale per la superficie standard, altre superfici si trovano nell'indice degli articoli
 1/2008 XXX = Please see page 10.1 for finish indicators / * the PG is for standard colours, PG for other colours are in the Code Numbers

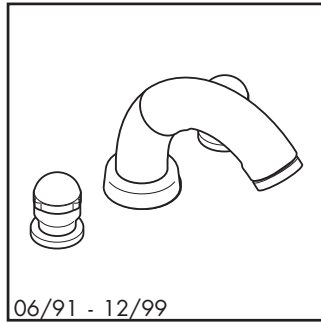
hansgrohe

Axor Arco / Axor Allegroh

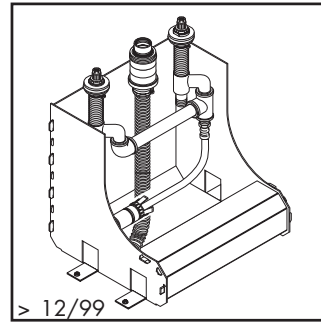
3-Loch-Armatur Wannenrand / Combinazione kombi 3 fori bordo vasca / 3-Hole bath mixer for bath tub



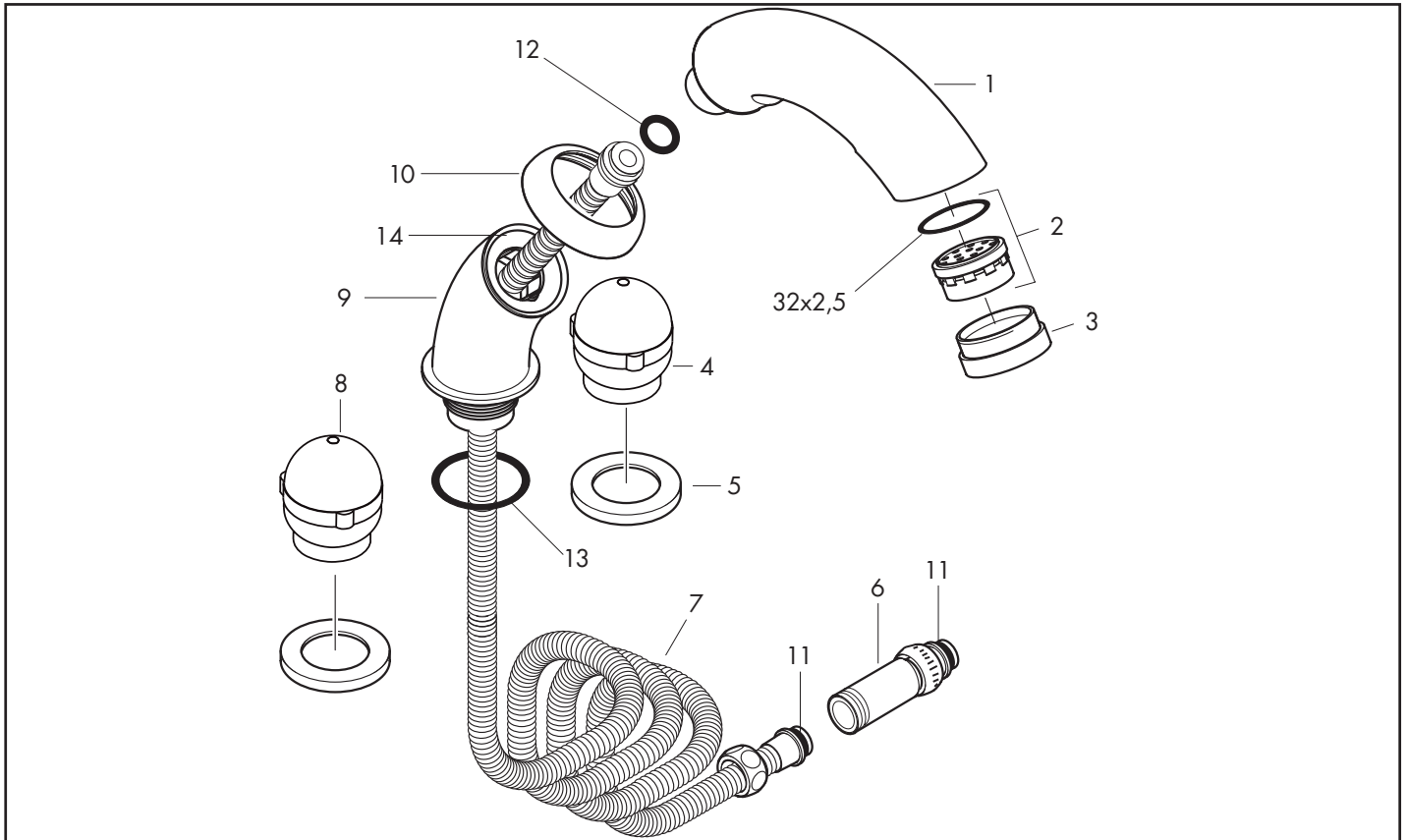
01/00 - 10/04
11433XXX



06/91 - 12/99
16433XXX



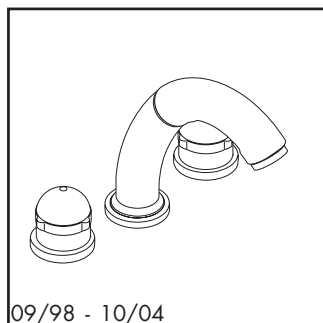
> 12/99
13433180 [47.1]



Pos.	Bezeichnung	Descrizione	Description	Nr./Nr./No.	VE	PG
1	Kombi-Auslauf	bocca erogazione Kombi	combination spout	94120XXX	1	18*
2	Luftsprudler kpl.	rompigetto compl.	aerator cpl.	94131000	1	7
3	Haltering	fissaggio per rompigetto	aerator housing	96084XXX	1	7*
4	Griff Kaltwasserseite	manopola acqua fredda	handle for cold water	94110XXX	1	11*
5	Rosette Ø 53 mm	copertura Ø 53 mm	escutcheon Ø 53 mm	94115XXX	1	6*
6	Rückflußverhindererpatrone	riduttore di flusso	back flow preventor cartridge	94146000	1	8
7	Brauseschlauch	flessibile	shower hose	94129000	1	13
8	Griff Warmwasserseite	manopola acqua calda	handle for hot water	94111XXX	1	11*
9	Auslauf	bocca erogazione	spout	96127XXX	1	16*
10	Rosette für Auslauf	cappuccio per bocca erogazione	escutcheon for spout	94119XXX	1	9*
11	O-Ring 11x2 (2 Stück)	O-Ring 11x2 (2 pezzo)	O-ring 11x2 (2 pieces)	98127000	Set	1
12	Flachdichtung	guarnizione piatta	flat seal	97674000	1	1
13	O-Ring 40x3	O-Ring 40x3	O-ring 40x3	92634000	1	1
14	Schlauchfutter für Brausehalter	mandrino per supporto doccia	insert for shower holder	97746000	1	3
	SECUFLEX + Brauseschlauch lang (max. Auszugslänge 1,40 m)	SECUFLEX flessibile + flessibile lungo (max. estens. 1,40 m)	SECUFLEX hose + long hose (max. extension 1,40 m)	94147000	1	21
	Grundset 3-Loch-Armatur, Ersatzteile siehe Kap. 47	corpo ad incasso, vedere capitolo 47	concealed items, see chapter 47	13433180	1	

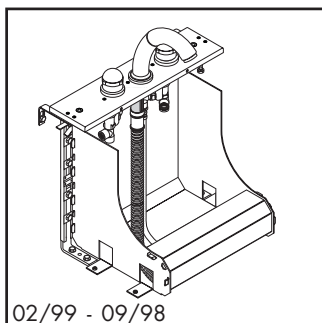
Axor Arco

3-Loch-Armatur Fliesenrand / Combinazione kombi 3 fori piano piastrelle / 3-Hole bath mixer for tile surround



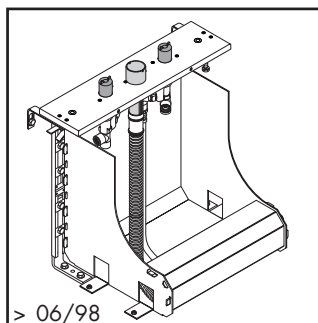
09/98 - 10/04

11335XXX



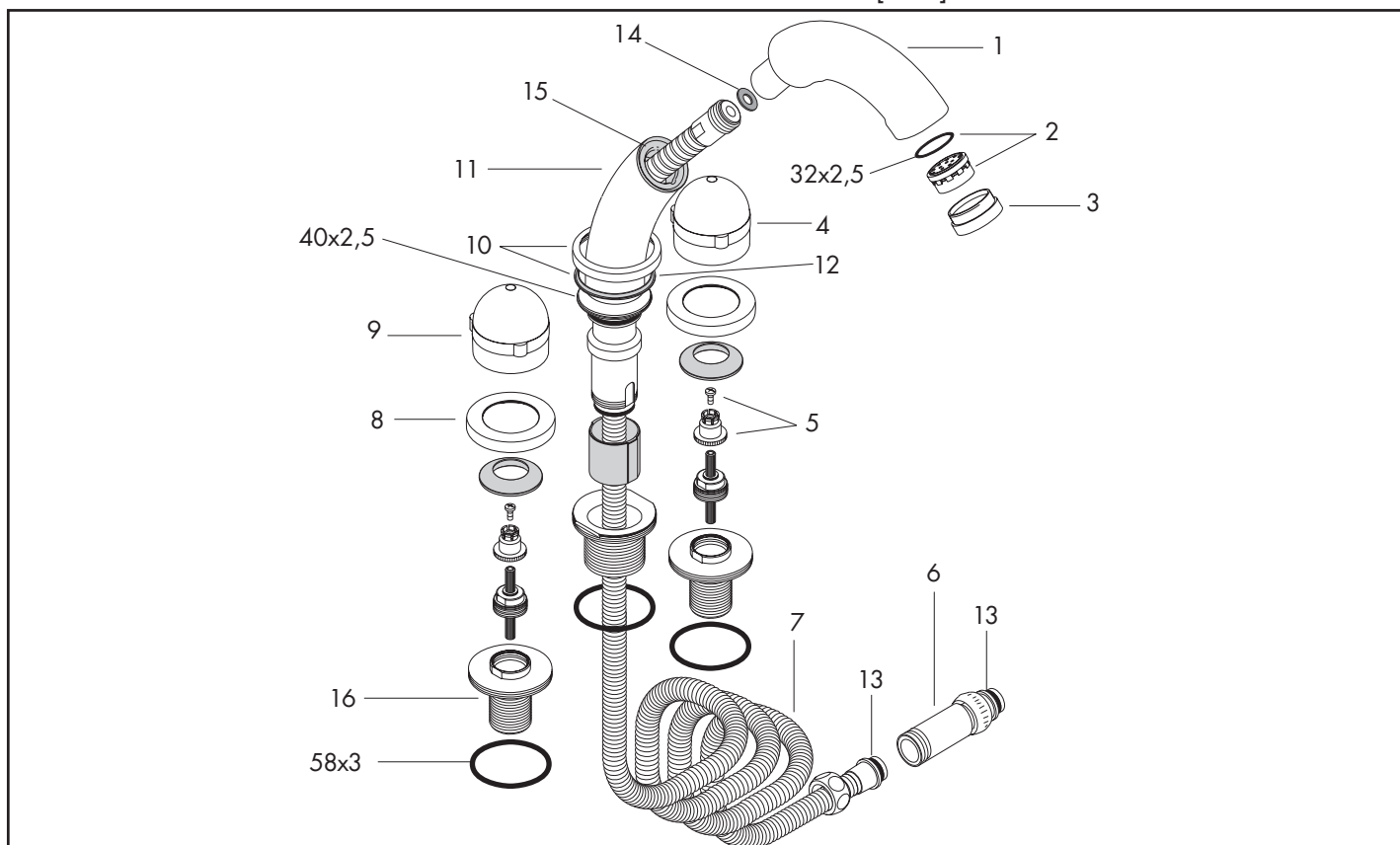
02/99 - 09/98

11336XXX



> 06/98

14435180 [47.1]



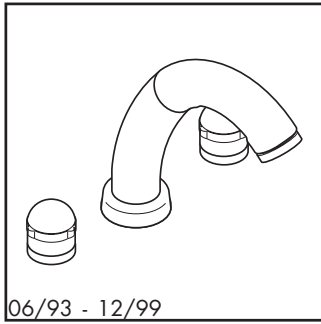
Pos.	Bezeichnung	Descrizione	Description	Nr./Nr./No.	VE	PG
1	Kombi-Auslauf	bocca erogazione Kombi	combination spout	94120XXX	1	18*
2	Luftsprudler kpl.	rompigetto compl.	aerator cpl.	94131000	1	7
3	Haltering	fissaggio per rompigetto	aerator housing	96084XXX	1	7*
4	Griff Kaltwasserseite	manopola acqua fredda	handle for cold water	94113XXX	1	11*
5	Schnappeinsatz mit Schraube	inserto in ABS per manopola	handle fixing set	94184000	1	2
6	Rückflußverhindererpatrone	riduttore di flusso	back flow preventor cartridge	94146000	1	8
7	Brauseschlauch	flessibile	shower hose	94129000	1	13
8	Rosette Ø 70 mm	copertura Ø 70 mm	escutcheon Ø 70 mm	96236XXX	1	9*
9	Griff Warmwasserseite	manopola acqua calda	handle for hot water	94114XXX	1	11*
10	Rosette für Brausehalter	rosetta per supporto doccia	escutcheon for shower holder	96237XXX	1	9*
11	Auslauf	bocca erogazione	spout	96235XXX	1	17*
12	Rosettenfutter	mandrino per rosetta	escutcheon chuck	97105000	1	3
13	O-Ring 11x2 (2 Stück)	O-Ring 11x2 (2 pezzo)	O-ring 11x2 (2 pieces)	98127000	Set	1
14	Flachdichtung	guarnizione piatta	flat seal	97674000	1	1
15	Schlauchfutter für Brausehalter	mandrino per supporto doccia	insert for shower holder	97746000	1	3
16	Spannflansch	flangia	flange	97656000	1	14
	SECUFLEX + Brauseschlauch lang (max. Auszugslänge 1,40 m)	SECUFLEX flessibile + flessibile lungo (max. estens. 1,40 m)	SECUFLEX hose + long hose (max. extension 1,40 m)	94147000	1	21
	Grundset 3-Loch-Fliesenrand, Ersatzteile siehe Kap. 47	corpo ad incasso, vedere capitolo 47	concealed items, see chapter 47	14435180	1	

10.18 XXX = Oberflächenbezeichnung siehe Seite 10.1 / *die PG ist für die Standardoberfläche, andere Oberflächen sind im Artikelverzeichnis
 XXX = vedere pagina 10.1 per i codici colore/*la categoria prezzo vale per la superficie standard, altre superfici si trovano nell'indice degli articoli
 1/2008 XXX = Please see page 10.1 for finish indicators / * the PG is for standard colours, PG for other colours are in the Code Numbers

hansgrohe

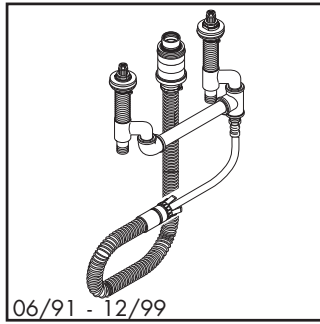
Axor Arco / Axor Allegroh

3-Loch-Armatur Fliesenrand / Combinazione kombi 3 fori piano piastrelle / 3-Hole bath mixer for tile surround



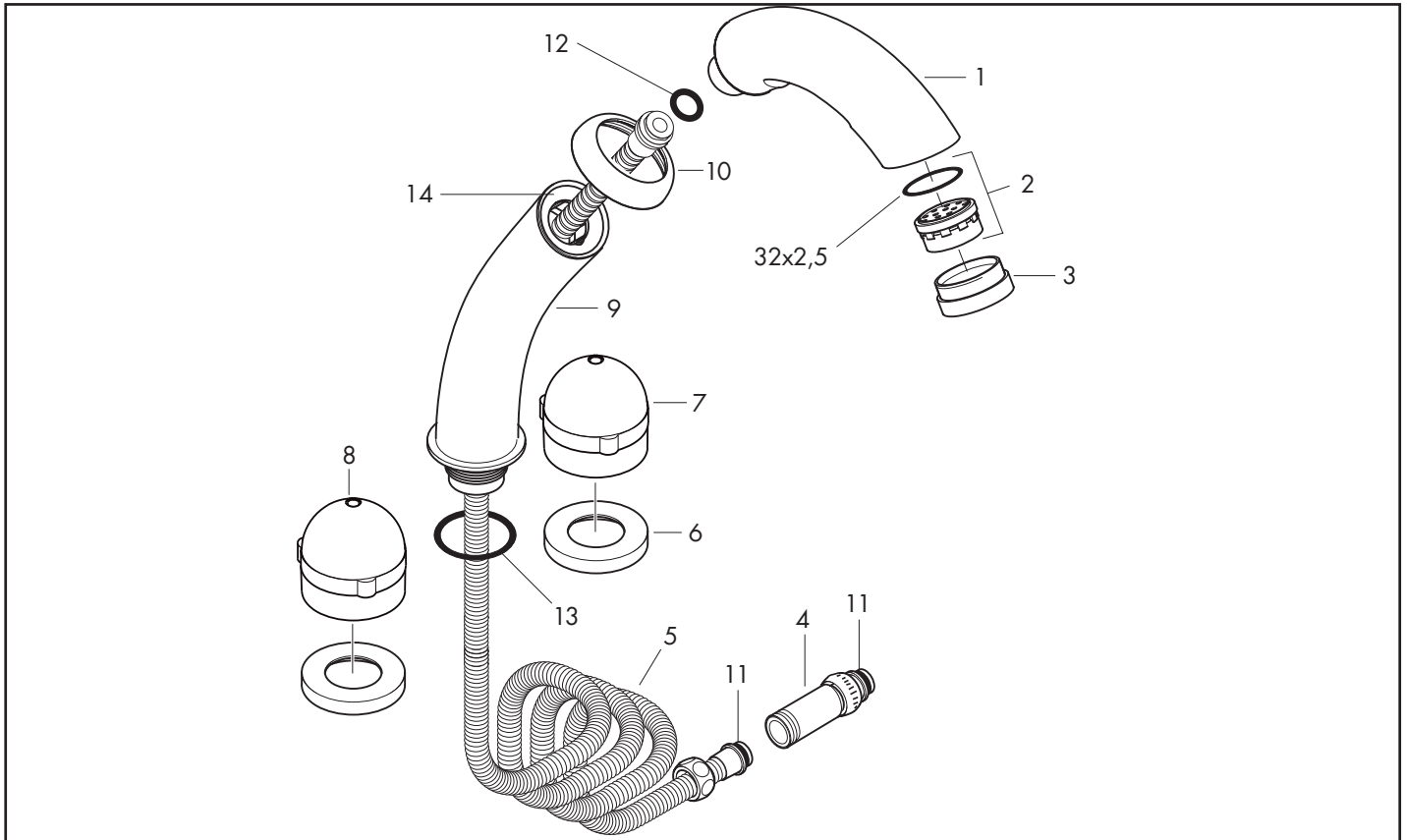
06/93 - 12/99

16533XXX



06/91 - 12/99

13433180 [47.1]



Pos.	Bezeichnung	Descrizione	Description	Nr./Nr./No.	VE	PG
1	Kombi-Auslauf	bocca erogazione Kombi	combination spout	94120XXX	1	18*
2	Luftsprudler kpl.	rompigetto compl.	aerator cpl.	94131000	1	7
3	Haltering	fissaggio per rompigetto	aerator housing	96084XXX	1	7*
4	Rückflußverhindererpatrone	riduttore di flusso	back flow preventor cartridge	94146000	1	8
5	Brauseschlauch	flessibile	shower hose	94129000	1	13
6	Rosette Ø 60 mm	copertura Ø 60 mm	escutcheon Ø 60 mm	94116XXX	1	7*
7	Griff Kaltwasserseite	manopola acqua fredda	handle for cold water	94113XXX	1	11*
8	Griff Warmwasserseite	manopola acqua calda	handle for hot water	94114XXX	1	11*
9	Auslauf	bocca erogazione	spout	96235XXX	1	17*
10	Rosette für Auslauf	cappuccio per bocca erogazione	escutcheon for spout	94119XXX	1	9*
11	O-Ring 11x2 (2 Stück)	O-Ring 11x2 (2 pezzo)	O-ring 11x2 (2 pieces)	98127000	Set	1
12	Flachdichtung	guarnizione piatta	flat seal	97674000	1	1
13	O-Ring 40x3	O-Ring 40x3	O-ring 40x3	92634000	1	1
14	Schlauchfutter für Brausehalter	mandrino per supporto doccia	insert for shower holder	97746000	1	3
	SECUFLEX + Brauseschlauch lang (max. Auszugslänge 1,40 m)	SECUFLEX flessibile + flessibile lungo (max. estens. 1,40 m)	SECUFLEX hose + long hose (max. extension 1,40 m)	94147000	1	21
	Grundset 3-Loch-Armatur, Ersatzteile siehe Kap. 47	corpo ad incasso, vedere capitolo 47	concealed items, see chapter 47	13433180	1	

hansgrohe

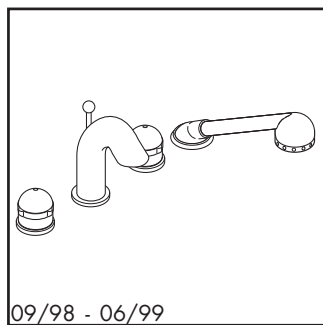
XXX = Oberflächenbezeichnung siehe Seite 10.1 / *die PG ist für die Standardoberfläche, andere Oberflächen sind im Artikelverzeichnis
XXX = vedere pagina 10.1 per i codici colore/*la categoria prezzo vale per la superficie standard, altre superfici si trovano nell'indice degli articoli
XXX = Please see page 10.1 for finish indicators / * the PG is for standard colours, PG for other colours are in the Code Numbers

10.19

1/2008

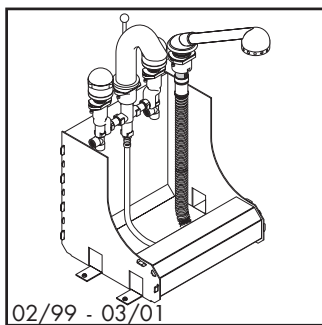
Axor Arco

4-Loch-Armatur Wannenrand / Combinazione kombi 4 fori bordo vasca / 4-Hole bath mixer for bath tub



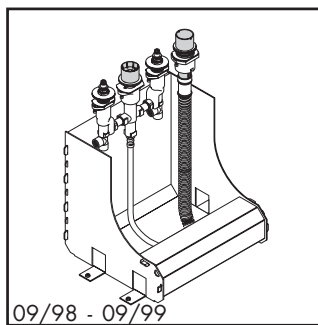
09/98 - 06/99

11441XXX



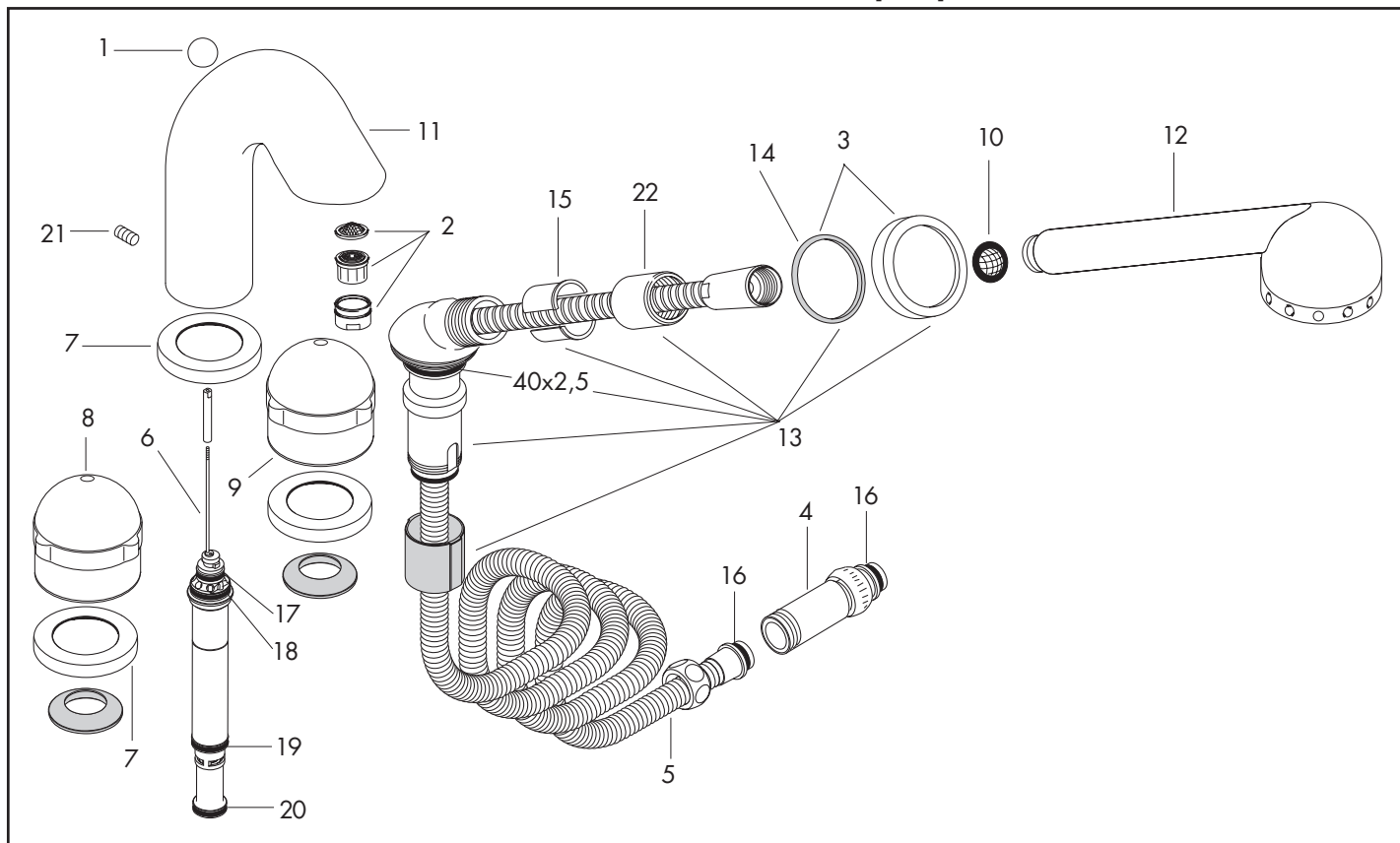
02/99 - 03/01

11442XXX



09/98 - 09/99

14444180 [47.1]



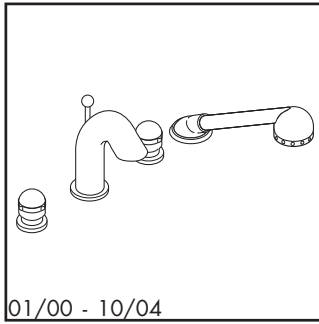
Pos.	Bezeichnung	Descrizione	Description	Nr./Nr./No.	VE	PG
1	Zugknopf	pomello deviatore	diverter knob	94102XXX	1	6*
2	Luftsprudler M28x1 B	rompigetto M28x1 B	aerator M28x1 B	13485XXX	1	6*
3	Rosette für Brausehalter	rosetta per supporto doccia	escutcheon for shower holder	96237XXX	1	9*
4	Rückflußverhindererpatrone	riduttore di flusso	back flow preventor cartridge	94146000	1	8
5	Brauseschlauch 2,00 m	flessibile 2,00 m	shower hose 2,00 m	94148000	1	12
6	Umsteller kpl.	deviatore completo	selector assy	96357000	1	14
7	Rosette Ø 70 mm	copertura Ø 70 mm	escutcheon Ø 70 mm	96236XXX	1	9*
8	Griff Warmwasserseite	manopola acqua calda	handle for hot water	94114XXX	1	11*
9	Griff Kaltwasserseite	manopola acqua fredda	handle for cold water	94113XXX	1	11*
10	Siebichtung (5 Stück)	filtrino (5 pezzo)	filter packing (5 pieces)	94246000	Set	1
11	Auslauf kpl.	bocca erogazione compl.	spout cpl.	96130XXX	1	20*
12	Handbrause	doccetta	handshower	28376XXX	1	15*
13	Brausehalter kpl.	supporto doccia compl.	shower holder, assy	96433XXX	1	14*
14	Rosettenfutter	mandrino per rosetta	escutcheon chuck	97105000	1	3
15	Schlauchfutter für Brausehalter	mandrino per supporto doccia	insert for shower holder	96942000	1	4
16	O-Ring 11x2 (2 Stück)	O-Ring 11x2 (2 pezzo)	O-ring 11x2 (2 pieces)	98127000	Set	1
17	O-Ring 15x2,5	O-Ring 15x2,5	O-ring 15x2,5	98131000	1	1
18	O-Ring 24x2,5	O-Ring 24x2,5	O-ring 24x2,5	98145000	1	1
19	O-Ring 20x2,5	O-Ring 20x2,5	O-ring 20x2,5	92602000	1	2
20	O-Ring 18x2,5	O-Ring 18x2,5	O-ring 18x2,5	98139000	1	1
21	Madenschraube M6x10 DIN 916	vite a perno M6x10 DIN 916	hollow set screw M6x10 DIN 916	96029000	1	1
22	Gleitring	anello a collare	lever collar	97548000	1	1
	SECUFLEX + Brauseschlauch lang (max. Auszugslänge 1,40 m)	SECUFLEX flessibile + flessibile lungo (max. estens. 1,40 m)	SECUFLEX hose + long hose (max. extension 1,40 m)	94109000	1	98
	Grundset, Ersatzteile siehe Kap.47	corpo ad incasso, vedere capitolo 47	concealed item, see chapter 47	14444180	1	

10.20 XXX = Oberflächenbezeichnung siehe Seite 10.1 / *die PG ist für die Standardoberfläche, andere Oberflächen sind im Artikelverzeichnis
 XXX = vedere pagina 10.1 per i codici colore/*la categoria prezzo vale per la superficie standard, altre superfici si trovano nell'indice degli articoli
 1/2008 XXX = Please see page 10.1 for finish indicators / * the PG is for standard colours, PG for other colours are in the Code Numbers

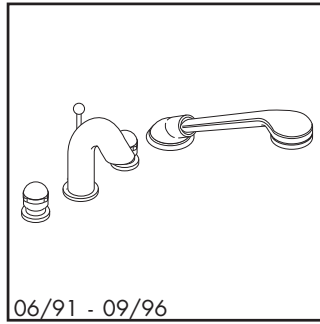
hansgrohe

Axor Arco / Axor Allegroh

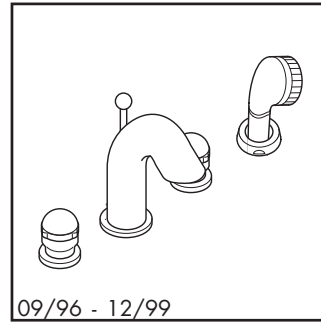
4-Loch-Armatur Wannenrand / Combinazione kombi 4 fori bordo vasca / 4-Hole bath mixer for bath tub



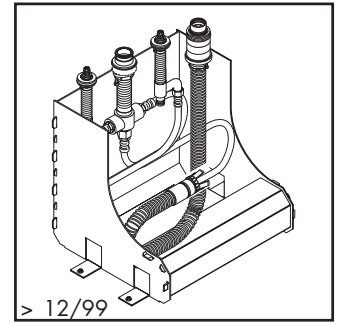
01/00 - 10/04
11444XXX



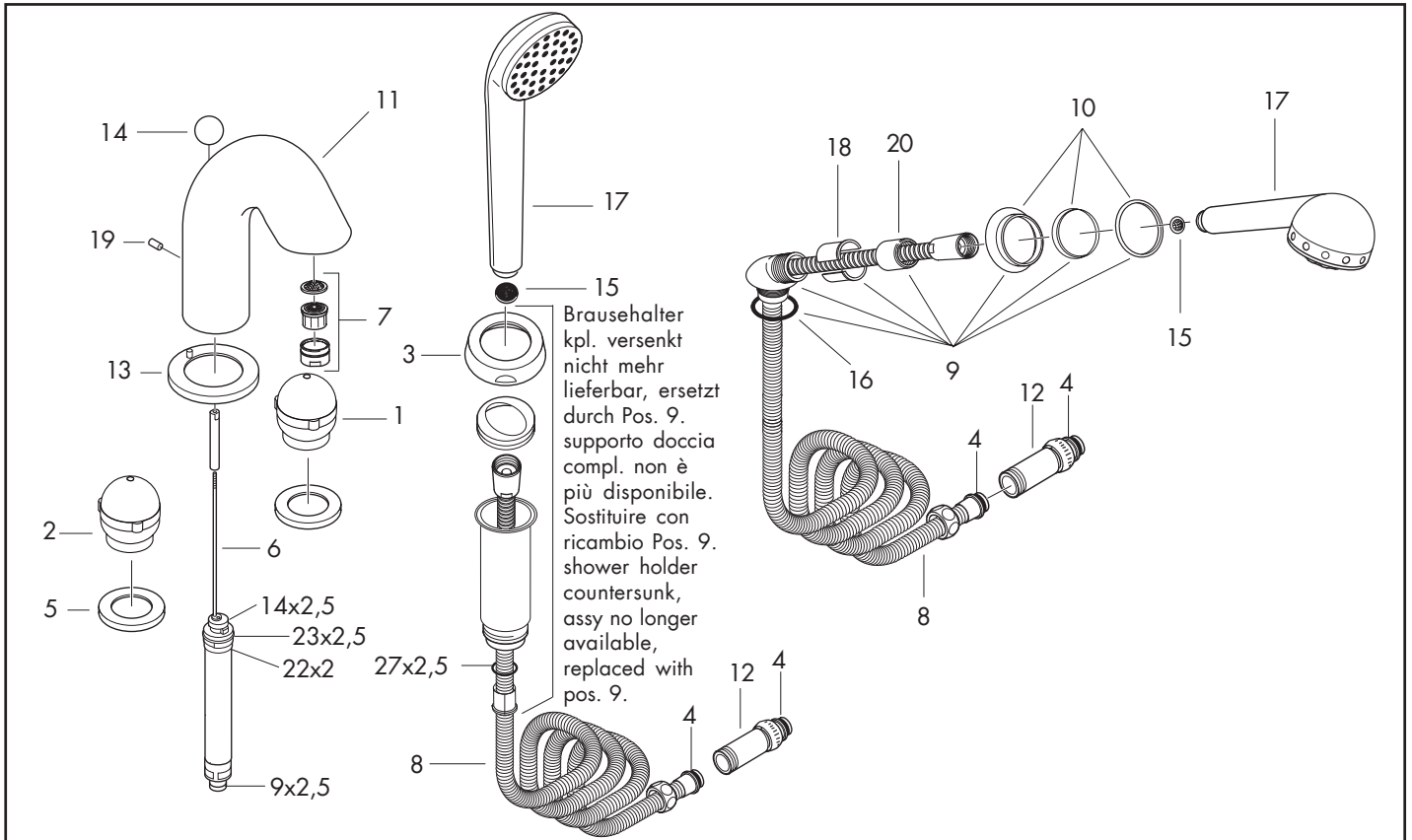
06/91 - 09/96
16444XXX



09/96 - 12/99
16444XXX



> 12/99
13444180 [47.1]



Pos.	Bezeichnung	Descrizione	Description	Nr./Nr./No.	VE	PG
1	Griff Kaltwasserseite	manopola acqua fredda	handle for cold water	94110XXX	1	11*
2	Griff Warmwasserseite	manopola acqua calda	handle for hot water	94111XXX	1	11*
3	Rosette für Schlauchdurchführung Ø 70 mm	ghiera per flessibile Ø 70 mm	escutcheon for hose Ø 70 mm	94117XXX	1	10*
4	O-Ring 11x2 (2 Stück)	O-Ring 11x2 (2 pezzo)	O-ring 11x2 (2 pieces)	98127000	Set	1
5	Rosette Ø 53 mm	copertura Ø 53 mm	escutcheon Ø 53 mm	94115XXX	1	6*
6	Umsteller kpl.	deviatore completo	selector assy	94122000	1	17
7	Luftsprudler M28x1 B	rompigetto M28x1 B	aerator M28x1 B	13485XXX	1	6*
8	Brauseschlauch 2,00 m	flessibile 2,00 m	shower hose 2,00 m	94148000	1	12
9	Brausehalter kpl.	supporto doccia compl.	shower holder, assy	96433XXX	1	14*
10	Rosette für Brausehalter	rosetta per supporto doccia	escutcheon for shower holder	96237XXX	1	9*
11	Auslauf kpl.	bocca erogazione compl.	spout cpl.	96130XXX	1	20*
12	Rückflußverhindererpatrone	riduttore di flusso	back flow preventor cartridge	94146000	1	8
13	Rosette für Auslauf	cappuccio per bocca erogazione	escutcheon for spout	95023XXX	1	6*
14	Zugknopf	pomello deviatore	diverter knob	94102XXX	1	6*
15	Siebichtung (5 Stück)	filtrino (5 pezzo)	filter packing (5 pieces)	94246000	Set	1
16	O-Ring 40x3	O-Ring 40x3	O-ring 40x3	92634000	1	1
17	Handbrause	doccetta	handshower	28376XXX	1	15*
18	Schlauchfutter für Brausehalter	mandrino per supporto doccia	insert for shower holder	96942000	1	4
19	Madenschraube M6x10 DIN 916	vite a perno M6x10 DIN 916	hollow set screw M6x10 DIN 916	96029000	1	1
20	Mutter	ghiera di fissaggio	nut	97584XXX	1	5*
	SECUFLEX + Brauseschlauch lang (max. Auszugslänge 1,40 m)	SECUFLEX flessibile + flessibile lungo (max. estens. 1,40 m)	SECUFLEX hose + long hose (max. extension 1,40 m)	94109000	1	98
	Grundset, Ersatzteile siehe Kap.47	corpo ad incasso, vedere capitolo 47	concealed item, see chapter 47	13444180	1	

hansgrohe

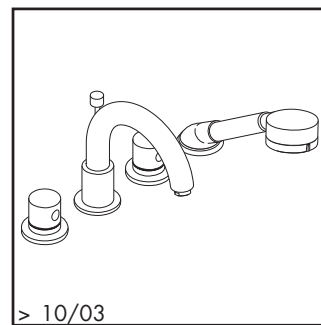
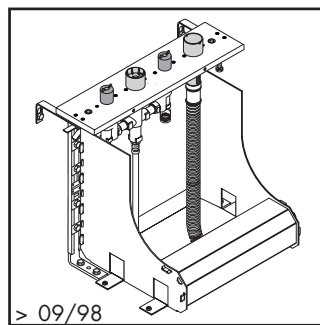
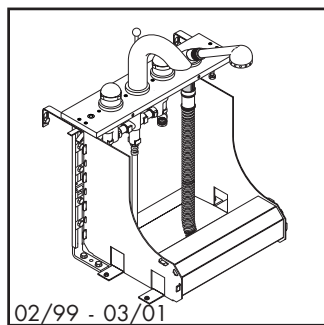
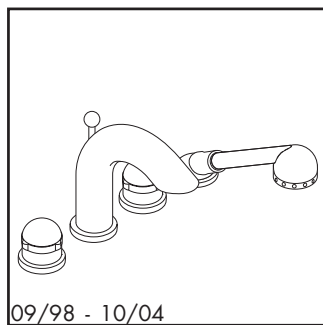
XXX = Oberflächenbezeichnung siehe Seite 10.1 / *die PG ist für die Standardoberfläche, andere Oberflächen sind im Artikelverzeichnis
 XXX = vedere pagina 10.1 per i codici colore/*la categoria prezzo vale per la superficie standard, altre superfici si trovano nell'indice degli articoli
 XXX = Please see page 10.1 for finish indicators / * the PG is for standard colours, PG for other colours are in the Code Numbers

10.21

1/2008

Axor Arco

4-Loch-Armatur Fliesenrand / Combinazione kombi 4 fori piano piastrelle / 4-Hole bath mixer for tile surround

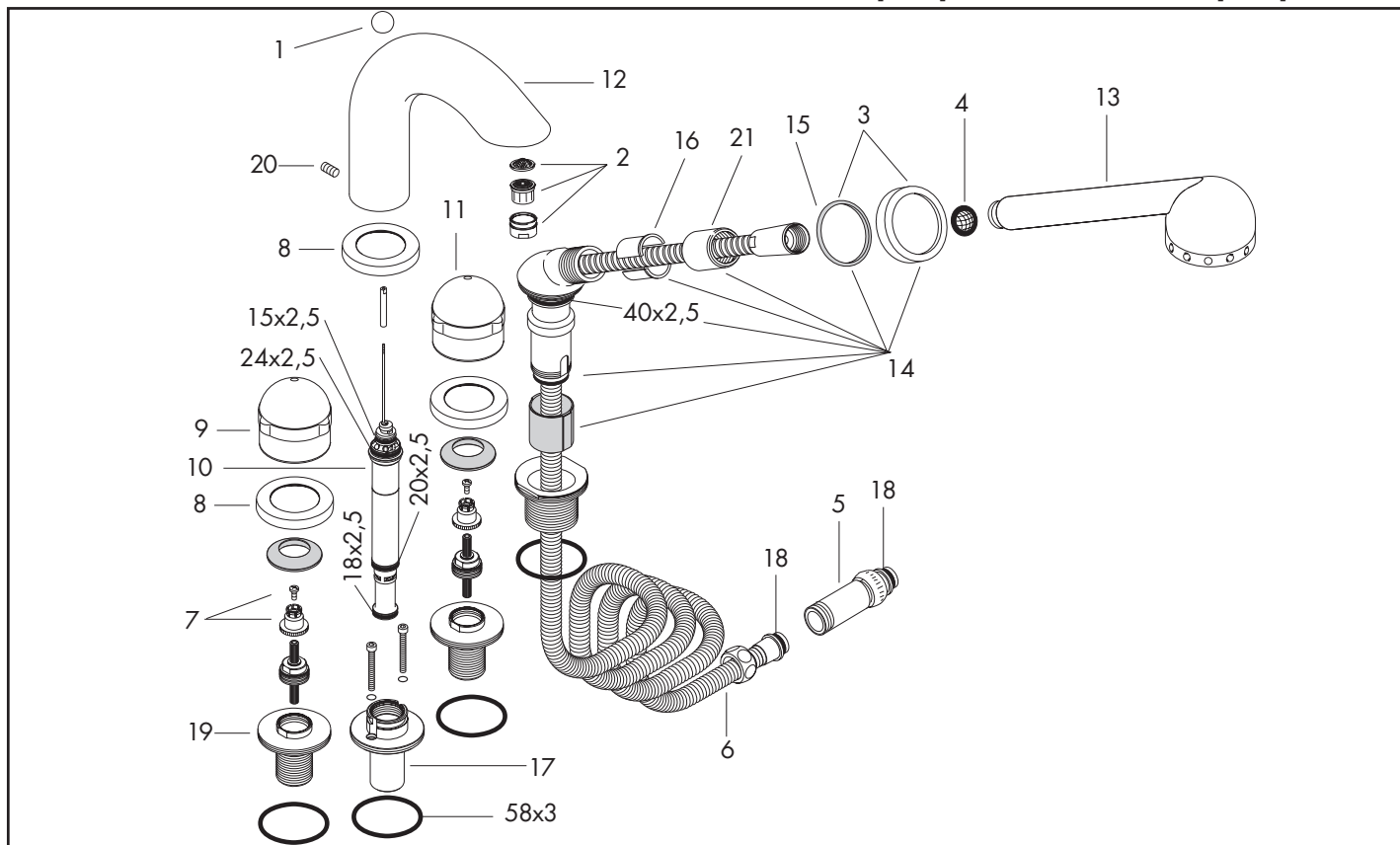


09/98 - 10/04
11451XXX

02/99 - 03/01
11452XXX

> 09/98
14445180 [47.1]

> 10/03
Axor Uno [19.1]



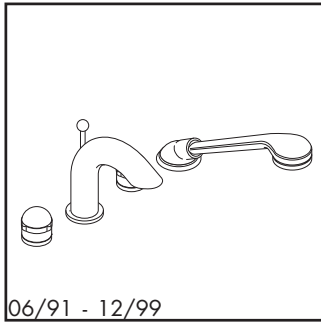
Pos.	Bezeichnung	Descrizione	Description	Nr./Nr./No.	VE	PG
1	Zugknopf	pomello deviatore	diverter knob	94102XXX	1	6*
2	Luftsprudler M28x1 B	rompigetto M28x1 B	aerator M28x1 B	13485XXX	1	6*
3	Rosette für Brausehalter	rosetta per supporto doccia	escutcheon for shower holder	96237XXX	1	9*
4	Siebichtung (5 Stück)	filtrino (5 pezzo)	filter packing (5 pieces)	94246000	Set	1
5	Rückflußverhindererpatrone	riduttore di flusso	back flow preventor cartridge	94146000	1	8
6	Brauseschlauch 2,00 m	flessibile 2,00 m	shower hose 2,00 m	94148000	1	12
7	Schnappeinsatz mit Schraube	inserto in ABS per manopola	handle fixing set	94184000	1	2
8	Rosette Ø 70 mm	copertura Ø 70 mm	escutcheon Ø 70 mm	96236XXX	1	9*
9	Griff Warmwasserseite	manopola acqua calda	handle for hot water	94114XXX	1	11*
10	Umsteller kpl.	deviatore completo	selector assy	96358000	1	16
11	Griff Kaltwasserseite	manopola acqua fredda	handle for cold water	94113XXX	1	11*
12	Auslauf kpl.	bocca erogazione compl.	spout cpl.	96134XXX	1	21*
13	Handbrause	doccetta	handshower	28376XXX	1	15*
14	Brausehalter kpl.	supporto doccia compl.	shower holder, assy	96433XXX	1	14*
15	Rosettenfutter	mandrino per rosetta	escutcheon chuck	97105000	1	3
16	Schlauchfutter für Brausehalter	mandrino per supporto doccia	insert for shower holder	96942000	1	4
17	Umstellergehäuse	involucro per deviatore	selector housing	97225000	1	12
18	O-Ring 11x2 (2 Stück)	O-Ring 11x2 (2 pezzo)	O-ring 11x2 (2 pieces)	98127000	Set	1
19	Spannflansch	flangia	flange	97656000	1	14
20	Madenschraube M6x10 DIN 916	vite a perno M6x10 DIN 916	hollow set screw M6x10 DIN 916	96029000	1	1
21	Mutter	ghiera di fissaggio	nut	97584XXX	1	5*
	SECUFLEX + Brauseschlauch lang (max. Auszugslänge 1,40 m)	SECUFLEX flessibile + flessibile lungo (max. estens. 1,40 m)	SECUFLEX hose + long hose (max. extension 1,40 m)	94109000	1	98
	Grundset, Ersatzteile siehe Kap.47	corpo ad incasso, vedere capitolo 47	concealed item, see chapter 47	14445180	1	

10.22 XXX = Oberflächenbezeichnung siehe Seite 10.1 / *die PG ist für die Standardoberfläche, andere Oberflächen sind im Artikelverzeichnis
 XXX = vedere pagina 10.1 per i codici colore/*la categoria prezzo vale per la superficie standard, altre superfici si trovano nell'indice degli articoli
 1/2008 XXX = Please see page 10.1 for finish indicators / * the PG is for standard colours, PG for other colours are in the Code Numbers

hansgrohe

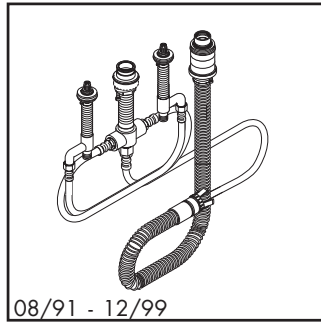
Axor Arco / Axor Allegroh

4-Loch-Armatur Fliesenrand / Combinazione kombi 4 fori piano piastrelle / 4-Hole bath mixer for tile surround



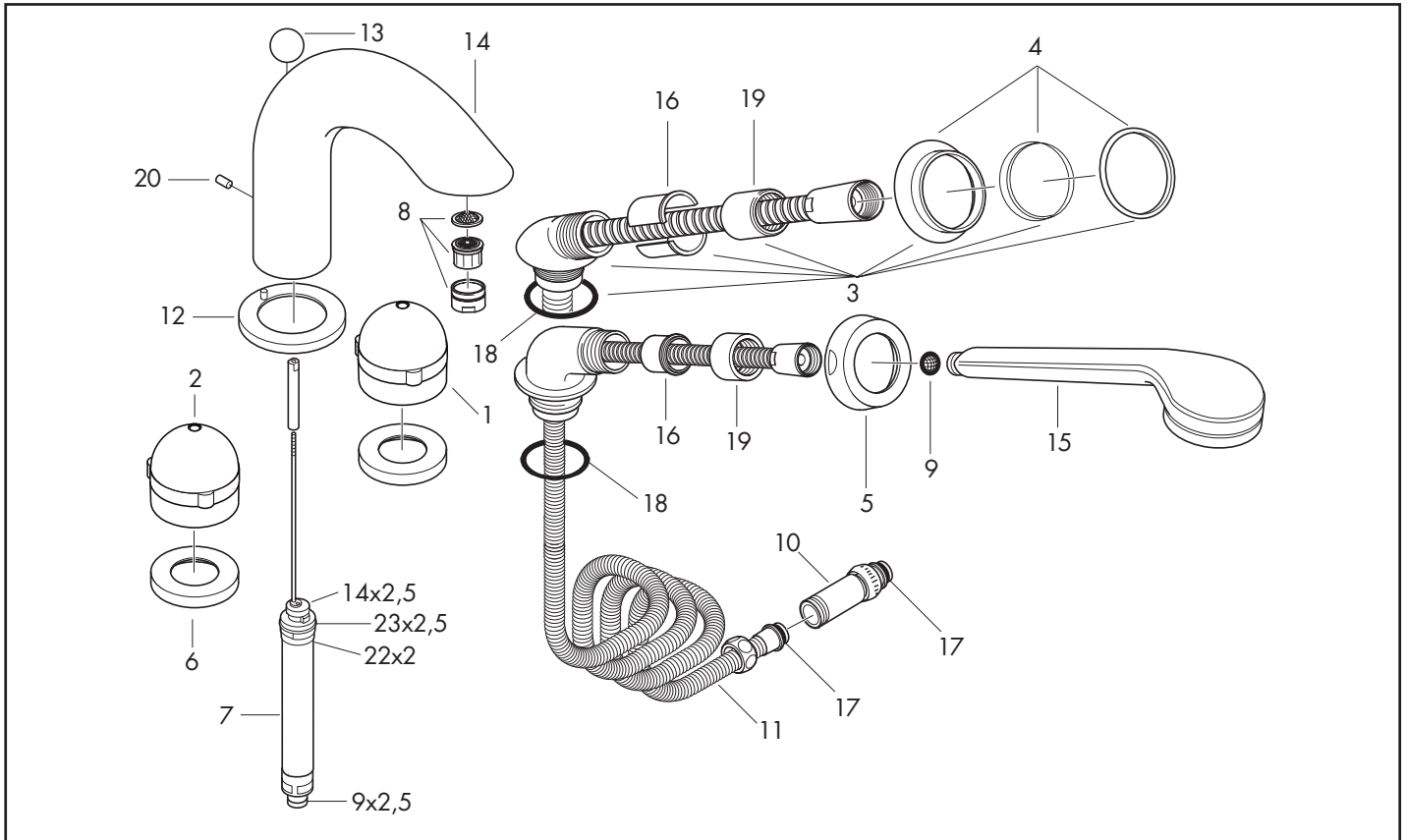
06/91 - 12/99

16454XXX



08/91 - 12/99

13444180 [47.1]



Pos.	Bezeichnung	Descrizione	Description	Nr./Nr./No.	VE	PG
1	Griff Kaltwasserseite	manopola acqua fredda	handle for cold water	94113XXX	1	11*
2	Griff Warmwasserseite	manopola acqua calda	handle for hot water	94114XXX	1	11*
3	Brausehalter kpl.	supporto doccia compl.	shower holder, assy	96433XXX	1	14*
4	Rosette für Brausehalter	rosetta per supporto doccia	escutcheon for shower holder	96237XXX	1	9*
5	Rosette für Schlauchdurchführung Ø 70 mm	ghiera per flessibile Ø 70 mm	escutcheon for hose Ø 70 mm	94117XXX	1	10*
6	Rosette Ø 60 mm	copertura Ø 60 mm	escutcheon Ø 60 mm	94116XXX	1	7*
7	Umsteller kpl.	deviatore completo	selector assy	94123000	1	17
8	Luftsprudler M28x1 B	rompigetto M28x1 B	aerator M28x1 B	13485XXX	1	6*
9	Siebichtung (5 Stück)	filtrino (5 pezzo)	filter packing (5 pieces)	94246000	Set	1
10	Rückflußverhindererpatrone	riduttore di flusso	back flow preventor cartridge	94146000	1	8
11	Brauseschlauch 2,00 m	flessibile 2,00 m	shower hose 2,00 m	94148000	1	12
12	Rosette für Auslauf	cappuccio per bocca erogazione	escutcheon for spout	95023XXX	1	6*
13	Zugknopf	pomello deviatore	diverter knob	94102XXX	1	6*
14	Auslauf kpl.	bocca erogazione compl.	spout cpl.	96134XXX	1	21*
15	Handbrause	doccetta	handshower	28376XXX	1	15*
16	Schlauchfutter für Brausehalter	mandrino per supporto doccia	insert for shower holder	96942000	1	4
17	O-Ring 11x2 (2 Stück)	O-Ring 11x2 (2 pezzo)	O-ring 11x2 (2 pieces)	98127000	Set	1
18	O-Ring 40x3	O-Ring 40x3	O-ring 40x3	92634000	1	1
19	Mutter	ghiera di fissaggio	nut	97584XXX	1	5*
20	Madenschraube M6x10 DIN 916	vite a perno M6x10 DIN 916	hollow set screw M6x10 DIN 916	96029000	1	1
	SECUFLEX + Brauseschlauch lang (max. Auszugslänge 1,40 m)	SECUFLEX flessibile + flessibile lungo (max. estens. 1,40 m)	SECUFLEX hose + long hose (max. extension 1,40 m)	94109000	1	98
	Grundset, Ersatzteile siehe Kap.47	corpo ad incasso, vedere capitolo 47	concealed item, see chapter 47	13444180	1	

hansgrohe

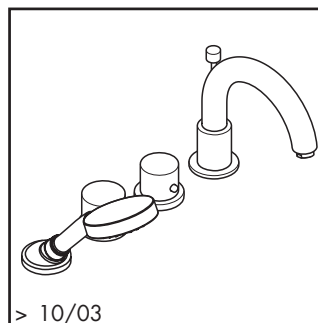
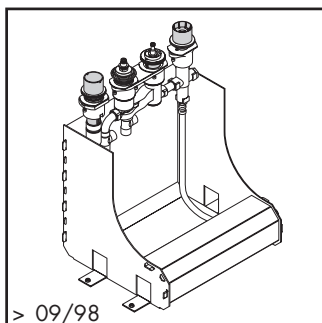
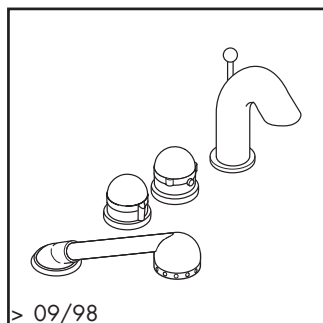
XXX = Oberflächenbezeichnung siehe Seite 10.1 / *die PG ist für die Standardoberfläche, andere Oberflächen sind im Artikelverzeichnis
 XXX = vedere pagina 10.1 per i codici colore/*la categoria prezzo vale per la superficie standard, altre superfici si trovano nell'indice degli articoli
 XXX = Please see page 10.1 for finish indicators / * the PG is for standard colours, PG for other colours are in the Code Numbers

10.23

1/2008

Axor Arco

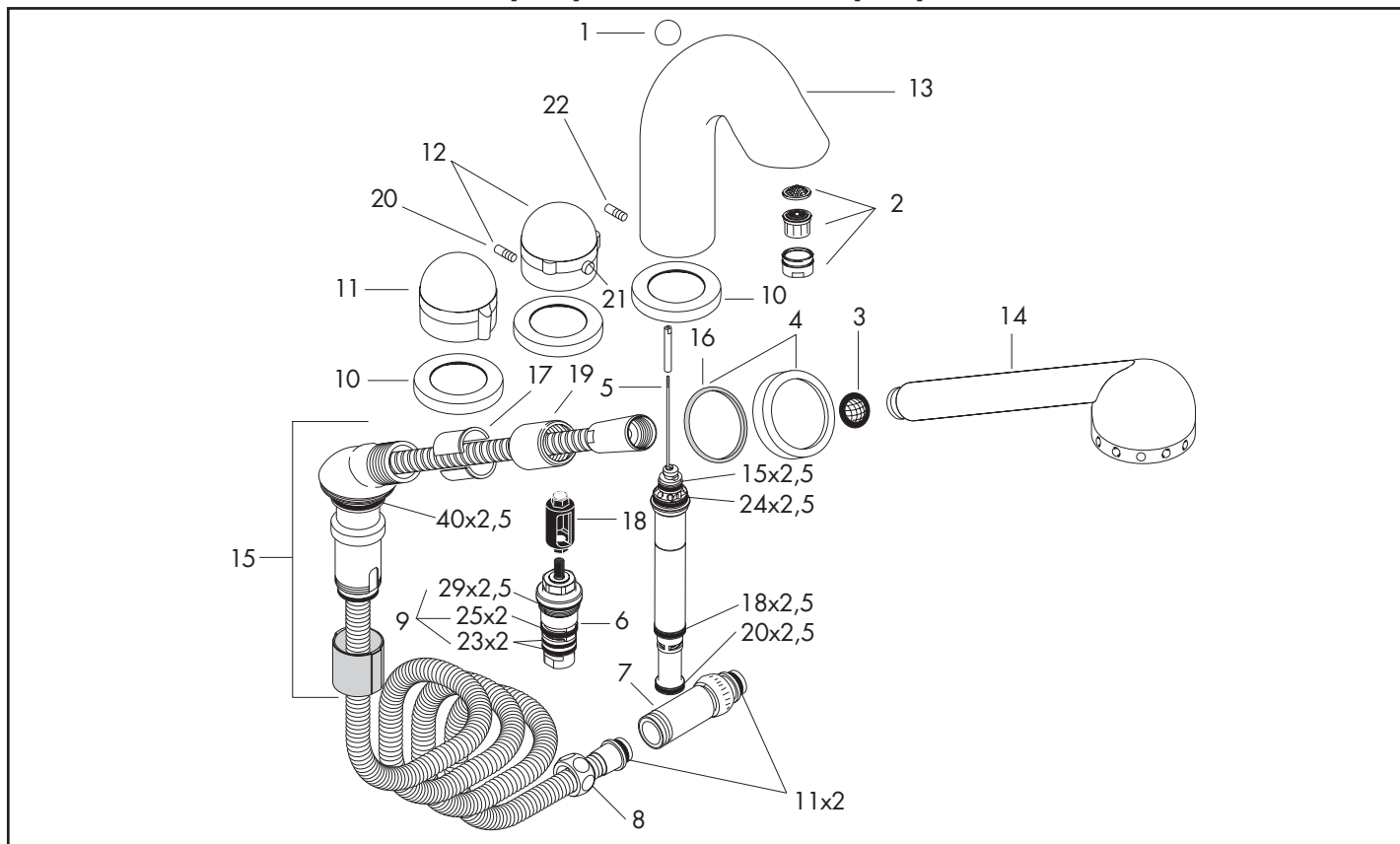
4-Loch-Armatur Wannenrand (Thermostat) / Combinazione kombi 4 fori bordo vasca (termostatico) /
4-Hole bath mixer for bath tub (thermostatic)



11461XXX

15460180 [47.1]

Axor Uno [19.1]



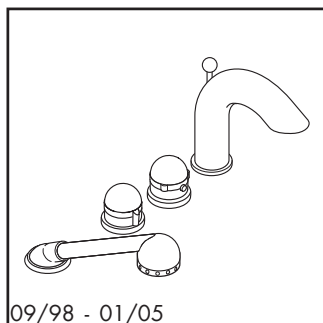
Pos.	Bezeichnung	Descrizione	Description	Nr./Nr./No.	VE	PG
1	Zugknopf	pomello deviatore	diverter knob	94102XXX	1	6*
2	Luftsprudler M28x1 B	rompigetto M28x1 B	aerator M28x1 B	13485XXX	1	6*
3	Siebichtung (5 Stück)	filtrino (5 pezzo)	filter packing (5 pieces)	94246000	Set	1
4	Rosette für Brausehalter	rosetta per supporto doccia	escutcheon for shower holder	96237XXX	1	9*
5	Umsteller kpl.	deviatore completo	selector assy	96357000	1	14
6	Temperatur Regeleinheit	elemento termostatico	thermostat cartridge	94282000	1	15
7	Rückflußverhindererpatrone	riduttore di flusso	back flow preventor cartridge	94146000	1	8
8	Brauseschlauch 2,00 m	flessibile 2,00 m	shower hose 2,00 m	94148000	1	12
9	Dichtungsset	set di guarnizioni	sealing set	95037000	1	10
10	Rosette Ø 70 mm	copertura Ø 70 mm	escutcheon Ø 70 mm	96236XXX	1	9*
11	Griff	manopola	handle	16993XXX	1	11*
12	Thermostatgriff	manopola termostatico	handle for thermostat	16391XXX	1	11*
13	Auslauf kpl.	bocca erogazione compl.	spout cpl.	96130XXX	1	20*
14	Handbrause	doccetta	handshower	28376XXX	1	15*
15	Brausehalter kpl.	supporto doccia compl.	shower holder, assy	96433XXX	1	14*
16	Rosettenfutter	mandrino per rosetta	escutcheon chuck	97105000	1	3
17	Schlauchfutter für Brausehalter	mandrino per supporto doccia	insert for shower holder	96942000	1	4
18	Griffadapter	adattatore per manopola	adapter for handle	97409000	1	7
19	Mutter	ghiera di fissaggio	nut	97584XXX	1	5*
20	Madenschraube M5x16	vite a perno M5x16	hollow set screw M5x16	97666000	1	1
21	Druckknopf rot	tasto rosso	pushbutton red	97212000	1	7
22	Madenschraube M6x10 DIN 916	vite a perno M6x10 DIN 916	hollow set screw M6x10 DIN 916	96029000	1	1
	SECUFLEX + Brauseschlauch lang (max. Auszugslänge 1,40 m)	SECUFLEX flessibile + flessibile lungo (max. estens. 1,40 m)	SECUFLEX hose + long hose (max. extension 1,40 m)	94109000	1	98
	Grundset, Ersatzteile siehe Kap.47	corpo ad incasso, vedere capitolo 47	concealed item, see chapter 47	15460180	1	

10.24 XXX = Oberflächenbezeichnung siehe Seite 10.1 / *die PG ist für die Standardoberfläche, andere Oberflächen sind im Artikelverzeichnis
XXX = vedere pagina 10.1 per i codici colore/*la categoria prezzo vale per la superficie standard, altre superfici si trovano nell'indice degli articoli
1/2008 XXX = Please see page 10.1 for finish indicators / * the PG is for standard colours, PG for other colours are in the Code Numbers

hansgrohe

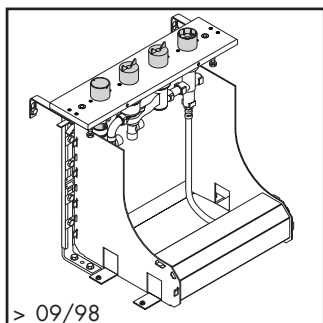
Axor Arco

4-Loch-Armatur Fliesenrand (Thermostat) / Combinazione kombi 4 fori piano piastrelle (termostatico)
/ 4-Hole bath mixer for tile surround (thermostatic)



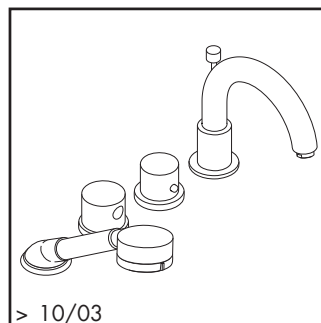
09/98 - 01/05

11466XXX



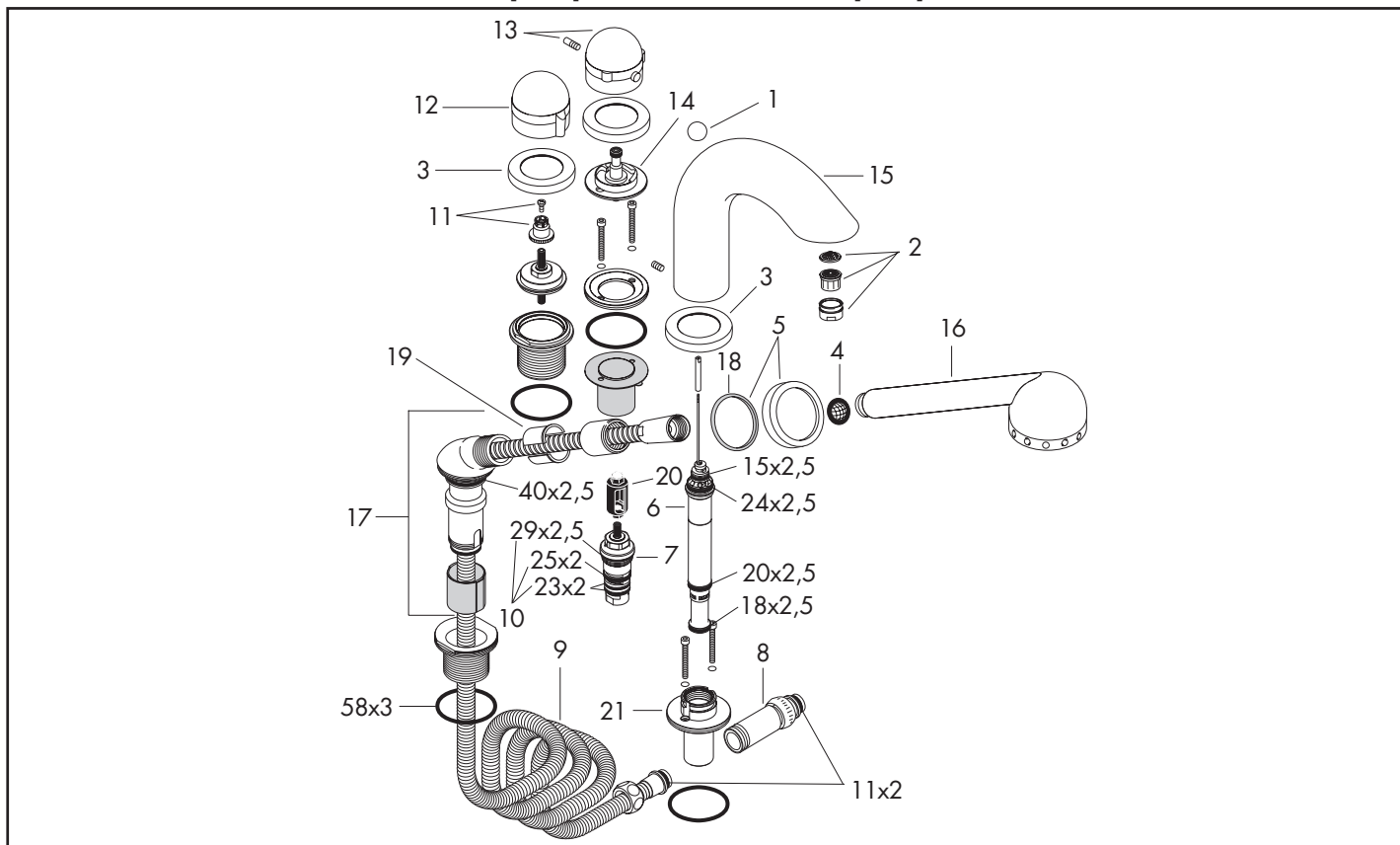
> 09/98

15465180 [47.1]



> 10/03

Axor Uno [19.1]



Pos.	Bezeichnung	Descrizione	Description	Nr./Nr./No.	VE	PG
1	Zugknopf	pomello deviatore	diverter knob	94102XXX	1	6*
2	Luftsprudler M28x1 B	rompigetto M28x1 B	aerator M28x1 B	13485XXX	1	6*
3	Rosette Ø 70 mm	copertura Ø 70 mm	escutcheon Ø 70 mm	96236XXX	1	9*
4	Siebdichtung (5 Stück)	filtrino (5 pezzo)	filter packing (5 pieces)	94246000	Set	1
5	Rosette für Brausehalter	rosetta per supporto doccia	escutcheon for shower holder	96237XXX	1	9*
6	Umsteller kpl.	deviatore completo	selector assy	96358000	1	16
7	Temperatur Regeleinheit	elemento termostatico	thermostat cartridge	94282000	1	15
8	Rückflußverhindererpatrone	riduttore di flusso	back flow preventor cartridge	94146000	1	8
9	Brauseschlauch 2,00 m	flessibile 2,00 m	shower hose 2,00 m	94148000	1	12
10	Dichtungsset	set di guarnizioni	sealing set	95037000	1	10
11	Schnappeinsatz mit Schraube	inserto in ABS per manopola	handle fixing set	94184000	1	2
12	Griff	manopola	handle	16993XXX	1	11*
13	Thermostatgriff	manopola termostatico	handle for thermostat	16391XXX	1	11*
14	Anschlagscheibe für Temperatur Regeleinheit	sistema d'arresto per regolazione temperatura	safety set for temperature control	96239000	1	12
15	Auslauf kpl.	bocca erogazione compl.	spout cpl.	96134XXX	1	21*
16	Handbrause	doccetta	handshower	28376XXX	1	15*
17	Brausehalter kpl.	supporto doccia compl.	shower holder, assy	96433XXX	1	14*
18	Rosettenfutter	mandrino per rosetta	escutcheon chuck	97105000	1	3
19	Schlauchfutter für Brausehalter	mandrino per supporto doccia	insert for shower holder	96942000	1	4
20	Griffadapter	adattatore per manopola	adapter for handle	97409000	1	7
21	Umstellergehäuse	involucro per deviatore	selector housing	97225000	1	12
	SECUFLEX + Brauseschlauch lang (max. Auszugslänge 1,40 m)	SECUFLEX flessibile + flessibile lungo (max. estens. 1,40 m)	SECUFLEX hose + long hose (max. extension 1,40 m)	94109000	1	98
	Grundset, Ersatzteile siehe Kap.47	corpo ad incasso, vedere capitolo 47	concealed item, see chapter 47	15465180	1	

hansgrohe

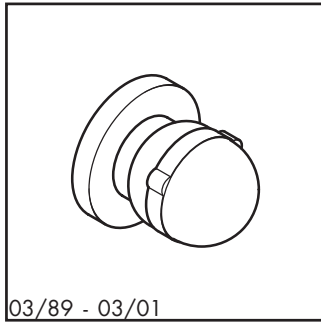
XXX = Oberflächenbezeichnung siehe Seite 10.1 / *die PG ist für die Standardoberfläche, andere Oberflächen sind im Artikelverzeichnis
XXX = vedere pagina 10.1 per i codici colore/*la categoria prezzo vale per la superficie standard, altre superfici si trovano nell'indice degli articoli
XXX = Please see page 10.1 for finish indicators / * the PG is for standard colours, PG for other colours are in the Code Numbers

10.25

1/2008

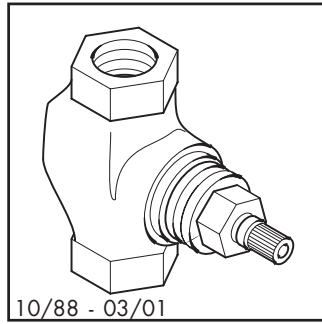
Axor Arco / Axor Allegroh

UP-Ventile / Rubinetto d'arresto / Stop valve



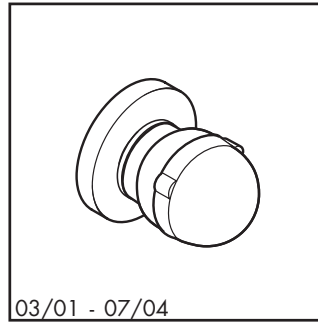
03/89 - 03/01

16976XXX



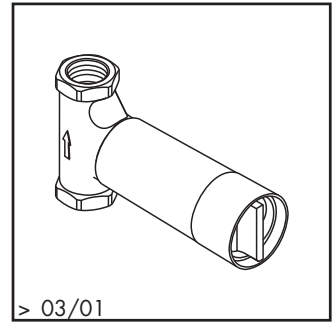
10/88 - 03/01

13973180 [45.1]



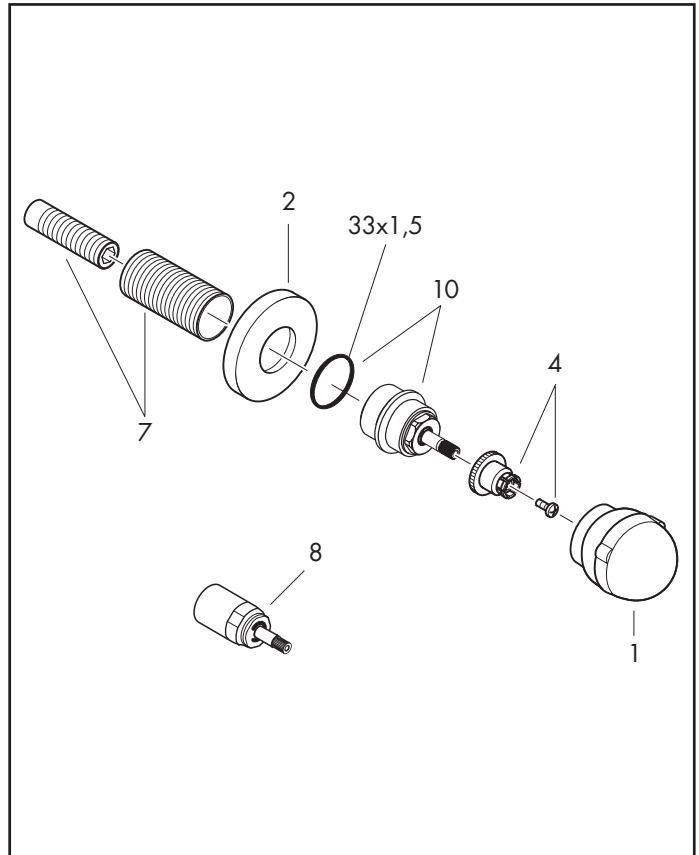
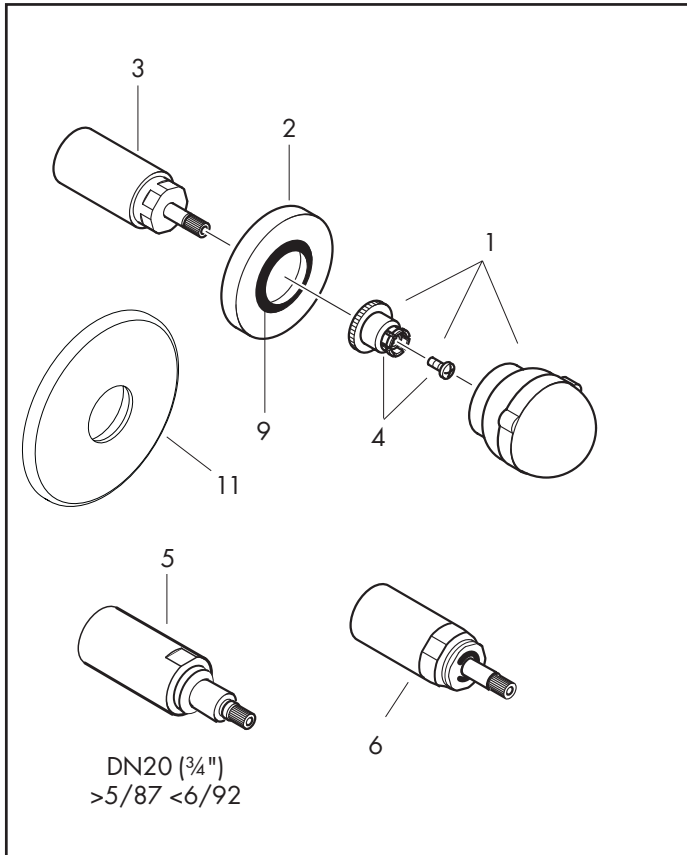
03/01 - 07/04

11970XXX



> 03/01

13973180 [45.1]



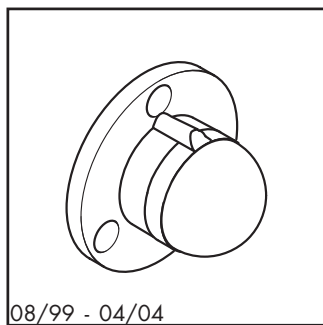
Pos.	Bezeichnung	Descrizione	Description	Nr./Nr./No.	VE	PG
1	Griff	manopola	handle	16991XXX	1	11*
2	Rosette Ø 66 mm	copertura Ø 66 mm	escutcheon Ø 66 mm	94353XXX	1	8*
3	Hülse DN15(1/2")+DN20(3/4")	cappuccio 1/2" + 3/4"	sleeve 1/2" + 3/4"	92650XXX	1	8*
4	Schnappeinsatz mit Schraube	inserto in ABS per manopola	handle fixing set	94184000	1	2
5	Hülse DN15+Absperrereinheit 92929	cappuccio 1/2"+cartuccia d'arresto	sleeve 1/2" + shut off unit 92929	92651XXX	1	8*
6	Verlängerung 40 mm	prolunga 40 mm	extension set 40 mm	13978000	1	12
7	Gewindehülsen Set	adattatore per set esterno	fixing set	96392000	1	8
8	Verlängerung 25 mm	prolunga 25 mm	extension 25 mm	96370000	1	98
9	Dichtung	guarnizione	seal	97560000	1	1
10	Mutter	ghiera di fissaggio	nut	97358000	1	9
11	Rosette Ø 108 mm	copertura Ø 108 mm	escutcheon Ø 108 mm	94355XXX	1	9*
	Grundset DN 20 (3/4"), Ersatzteile siehe Kap. 45	corpo ad incasso, vedere capitolo 45	concealed items, see chapter 45	13975180	1	
	Grundset DN 15 (1/2"), Ersatzteile siehe Kap. 45	corpo ad incasso, vedere capitolo 45	concealed items, see chapter 45	13973180	1	
	Grundset DN 20 (3/4"), Ersatzteile siehe Kap. 45	corpo ad incasso, vedere capitolo 45	concealed items, see chapter 45	13974180	1	
	Grundset DN 20 (3/4"), Ersatzteile siehe Kap. 45	corpo ad incasso, vedere capitolo 45	concealed items, see chapter 45	15970180	1	
	Grundset DN 15 (1/2"), Ersatzteile siehe Kap. 45	corpo ad incasso, vedere capitolo 45	concealed items, see chapter 45	15973180	1	
	Grundset DN 15 (1/2"), Ersatzteile siehe Kap. 45	corpo ad incasso, vedere capitolo 45	concealed items, see chapter 45	15974180	1	

10.26 XXX = Oberflächenbezeichnung siehe Seite 10.1 / *die PG ist für die Standardoberfläche, andere Oberflächen sind im Artikelverzeichnis
 XXX = vedere pagina 10.1 per i codici colore/*la categoria prezzo vale per la superficie standard, altre superfici si trovano nell'indice degli articoli
 1/2008 XXX = Please see page 10.1 for finish indicators / * the PG is for standard colours, PG for other colours are in the Code Numbers

hansgrohe

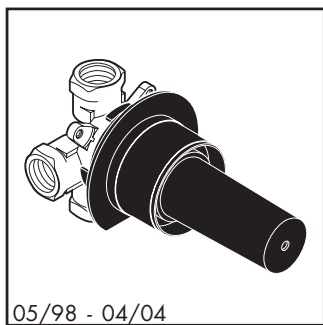
Axor Arco

Trio Stop / Fixfit Stop



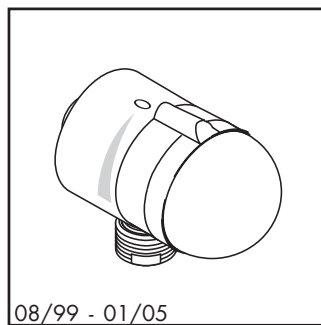
08/99 - 04/04

11885XXX



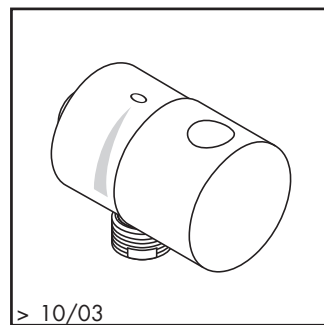
05/98 - 04/04

15980180 [45.1]



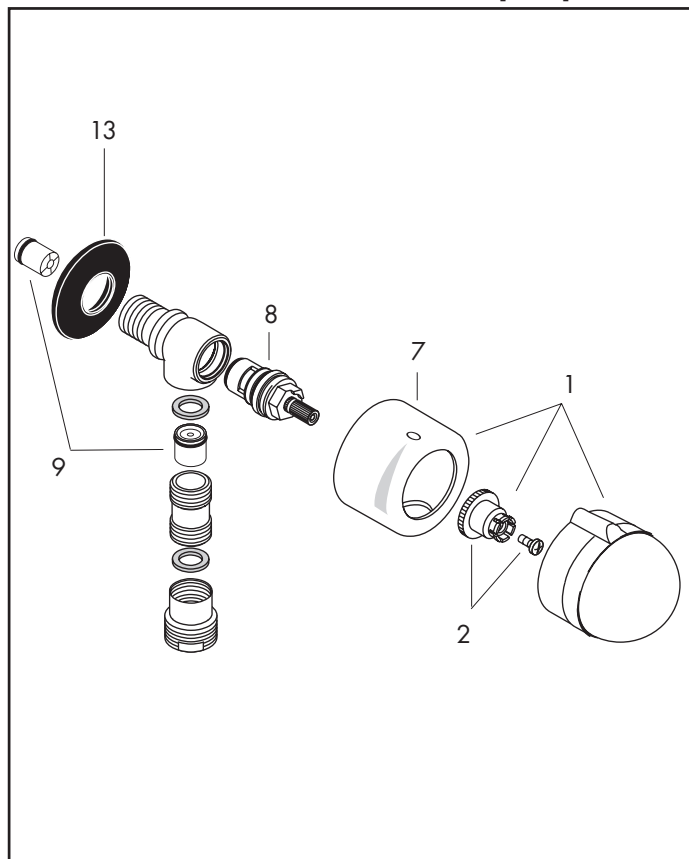
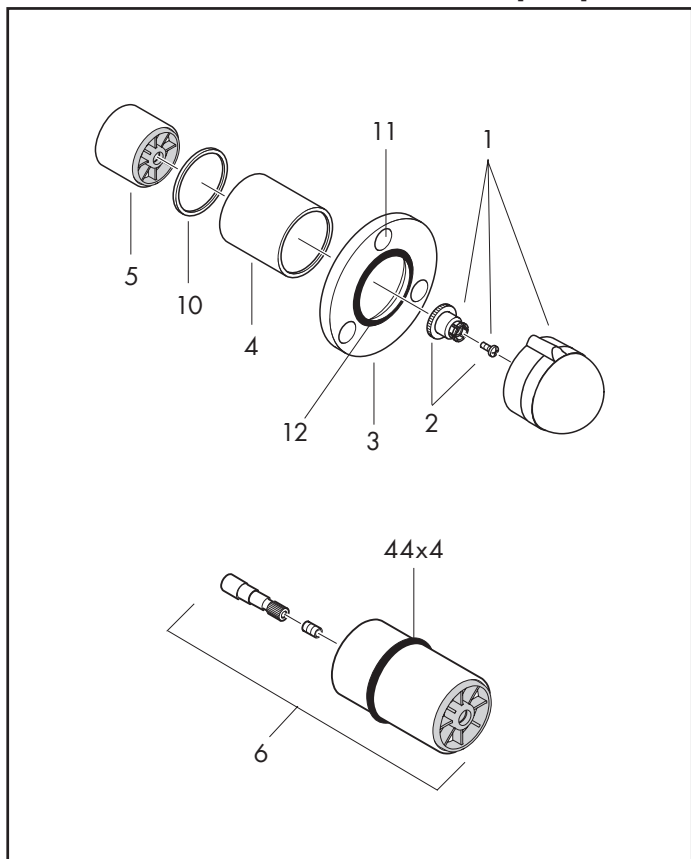
08/99 - 01/05

11882XXX



> 10/03

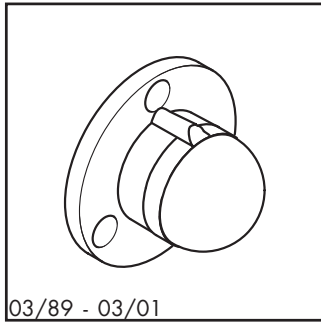
Axor Uno [19.1]



Pos.	Bezeichnung	Descrizione	Description	Nr./Nr./No.	VE	PG
1	Griff	manopola	handle	16993XXX	1	11*
2	Schnappeinsatz mit Schraube	inserto in ABS per manopola	handle fixing set	94184000	1	2
3	Rosette Ø 108 mm	copertura Ø 108 mm	escutcheon Ø 108 mm	13936XXX	1	11*
4	Hülse	cappuccio	sleeve	96242XXX	1	9*
5	Hülse	cappuccio	sleeve	96431XXX	1	4*
6	Verlängerung 40 mm, Trio Stop	prolunga 40 mm, Trio Stop	extension set 40 mm, Trio Stop	96241000	1	99
7	Hülse	cappuccio	sleeve	96240XXX	1	10*
8	Absperreinheit rechts schließend	valvola conclude a destra	shut off unit right closing	96350000	1	10
9	Rückflußverhinderer DW 15 (2 St.)	valvola antiriflusso DW 15 (2 pezzo)	non return valve DW 15 (2 pieces)	94074000	Set	3
10	Zwischenring	anello intermedio	spacer ring	97414000	1	4
11	Klebesymbole	simboli di funzione	stickers for symbols	97218XXX	1	6*
12	Dichtung	guarnizione	seal	97561000	1	2
13	Halteelement	elementi di supporto	support element	98557000	1	2
	Grundset Trio Stop, Ersatzteile siehe Kap. 45	corpo ad incasso, vedere capitolo 45	concealed items, see chapter 45	15980180	1	

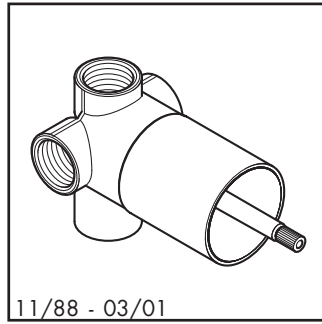
Axor Arco / Axor Allegroh

Quattro



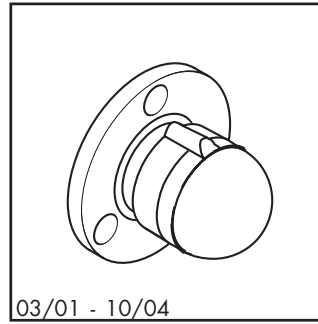
03/89 - 03/01

16933XXX



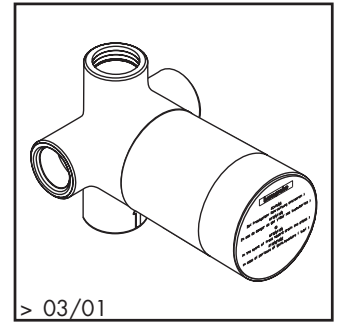
11/88 - 03/01

13932180 [45.1]



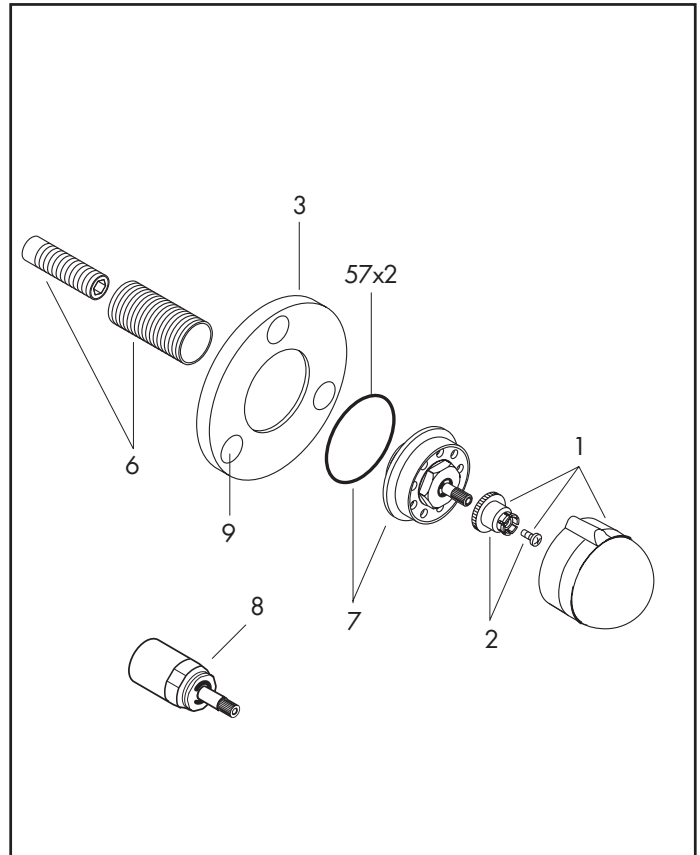
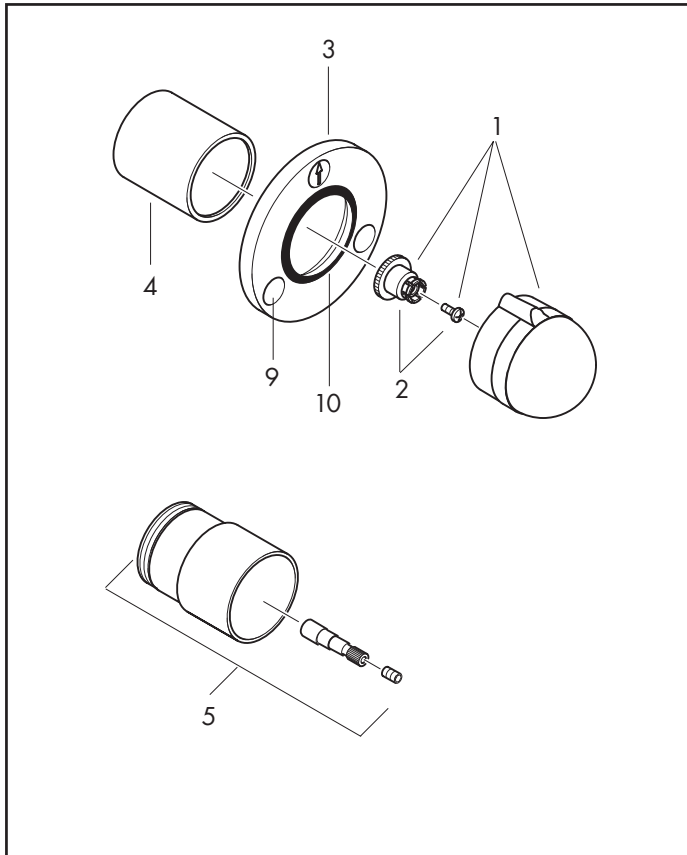
03/01 - 10/04

11930XXX



> 03/01

15930180 [45.1]



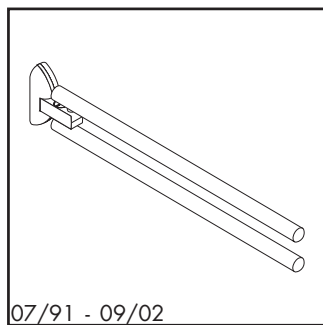
Pos.	Bezeichnung	Descrizione	Description	Nr./Nr./No.	VE	PG
1	Griff	manopola	handle	16993XXX	1	11*
2	Schnappeinsatz mit Schraube	inserto in ABS per manopola	handle fixing set	94184000	1	2
3	Rosette Ø 108 mm	copertura Ø 108 mm	escutcheon Ø 108 mm	13936XXX	1	11*
4	Hülse	cappuccio	sleeve	96242XXX	1	9*
5	Verlängerung 40 mm	prolunga 40 mm	extension set 40 mm	92630000	1	12
6	Gewindehülsen Set	adattatore per set esterno	fixing set	96392000	1	8
7	Mutter	ghiera di fissaggio	nut	96489XXX	1	8*
8	Verlängerung 25 mm	prolunga 25 mm	extension 25 mm	96370000	1	98
9	Klebesymbole	simboli di funzione	stickers for symbols	97218XXX	1	6*
10	Dichtung	guarnizione	seal	97561000	1	2
	Grundset, Ersatzteile siehe Kap.45	corpo ad incasso, vedere capitolo 45	concealed item, see chapter 45	13932180	1	
	Grundset, Ersatzteile siehe Kap.45	corpo ad incasso, vedere capitolo 45	concealed item, see chapter 45	15930180	1	

10.28XXX = Oberflächenbezeichnung siehe Seite 10.1 / *die PG ist für die Standardoberfläche, andere Oberflächen sind im Artikelverzeichnis
 XXX = vedere pagina 10.1 per i codici colore/*la categoria prezzo vale per la superficie standard, altre superfici si trovano nell'indice degli articoli
 1/2008 XXX = Please see page 10.1 for finish indicators / * the PG is for standard colours, PG for other colours are in the Code Numbers

hansgrohe

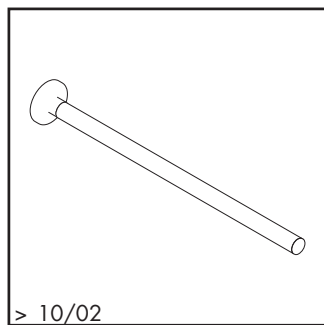
Axor Arco / Axor Allegroh

Handtuchhalter, -ring / Porta-asciugamano, curva / Towel holder, ring



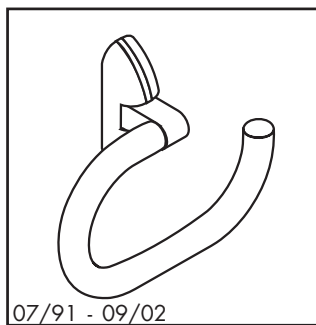
07/91 - 09/02

40620XXX



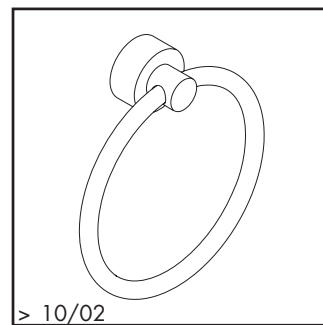
> 10/02

Axor Uno [19.1]



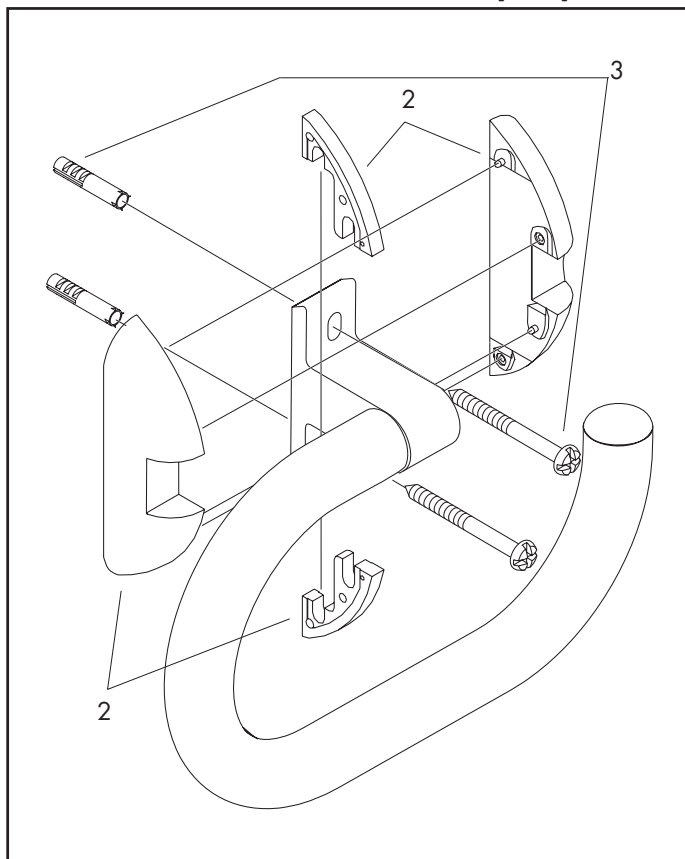
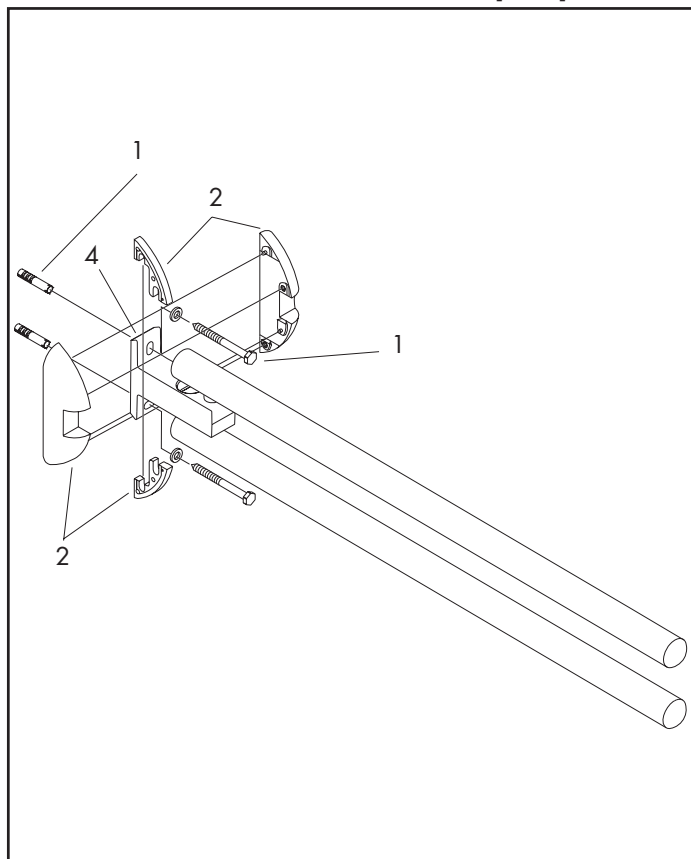
07/91 - 09/02

40621XXX



> 10/02

Axor Uno [19.1]

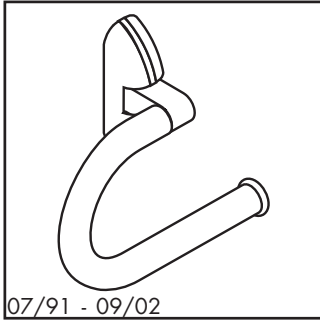


Pos.	Bezeichnung	Descrizione	Description	Nr./Nr./No.	VE	PG
1	Befestigungsteile	set di fissaggio	mounting set	40920000	1	2
2	Rosetten + Schieber für Arco	copertura supporto per Arco	escutcheon + sleeve for Arco	40689XXX	1	9*
3	Befestigungsteile	set di fissaggio	mounting set	40915000	1	4
4	Halteelement	elementi di supporto	support element	97106XXX	1	12*

10.32 XXX = Oberflächenbezeichnung siehe Seite 10.1 / *die PG ist für die Standardoberfläche, andere Oberflächen sind im Artikelverzeichnis
 XXX = vedere pagina 10.1 per i codici colore/*la categoria prezzo vale per la superficie standard, altre superfici si trovano nell'indice degli articoli
 1/2008 XXX = Please see page 10.1 for finish indicators / * the PG is for standard colours, PG for other colours are in the Code Numbers

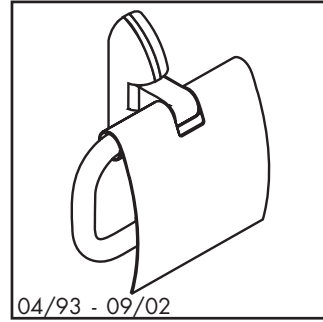
hansgrohe

Axor Arco / Axor Allegroh
 Papierrollenhalter / Portarotolo / Roll holder



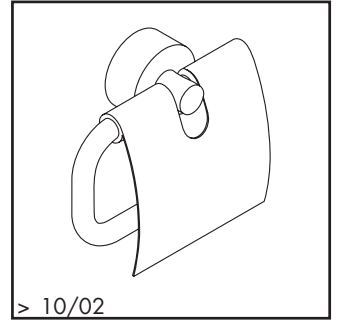
07/91 - 09/02

40636XXX



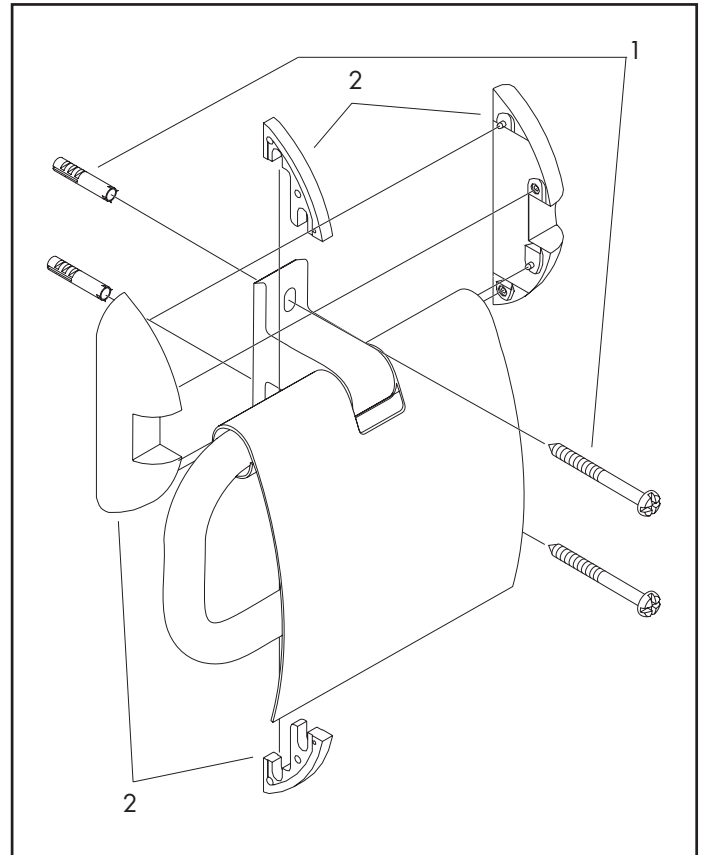
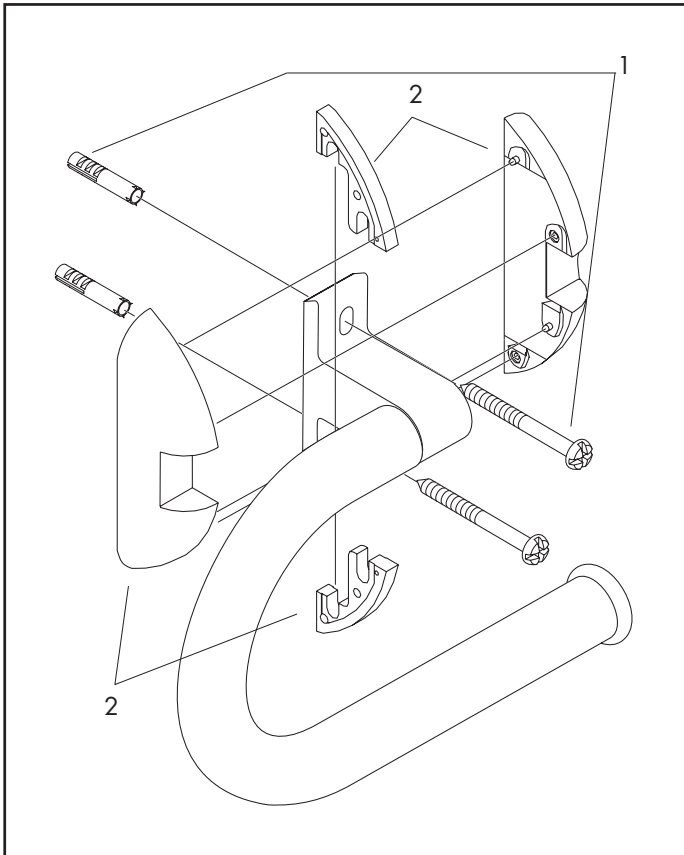
04/93 - 09/02

40638XXX



> 10/02

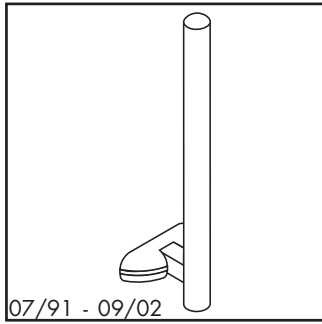
Axor Uno [19.1]



Pos.	Bezeichnung	Descrizione	Description	Nr./Nr./No.	VE	PG
1	Befestigungsteile	set di fissaggio	mounting set	40915000	1	4
2	Rosetten + Schieber für Arco	copertura supporto per Arco	escutcheon + sleeve for Arco	40689XXX	1	9*

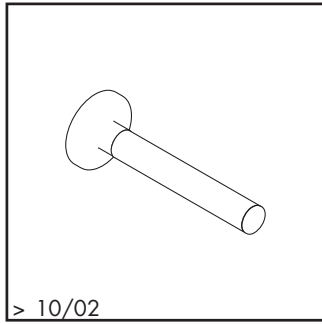
Axor Arco / Axor Allegroh

Reservepapierhalter, WC-Bürstenhalter / Portarotolo di riserva, spazzola per WC / Holder for spare roll, WC Brush holder



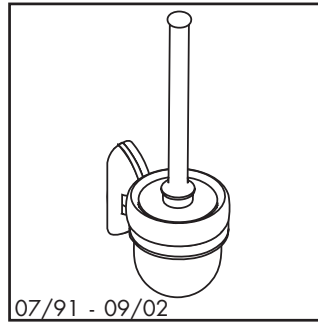
07/91 - 09/02

40628XXX



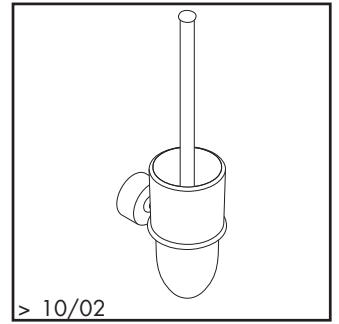
> 10/02

Axor Uno [19.1]



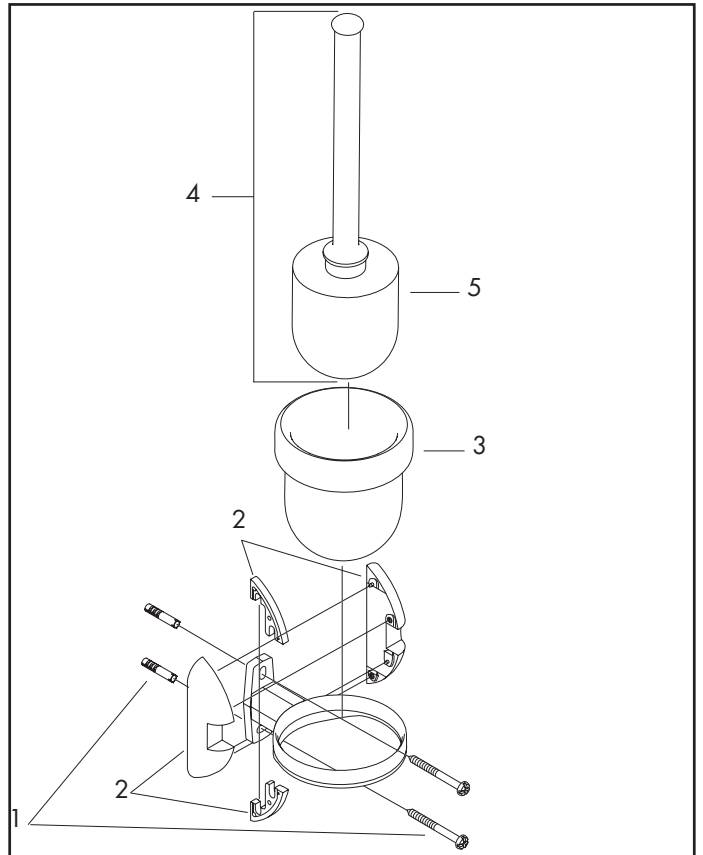
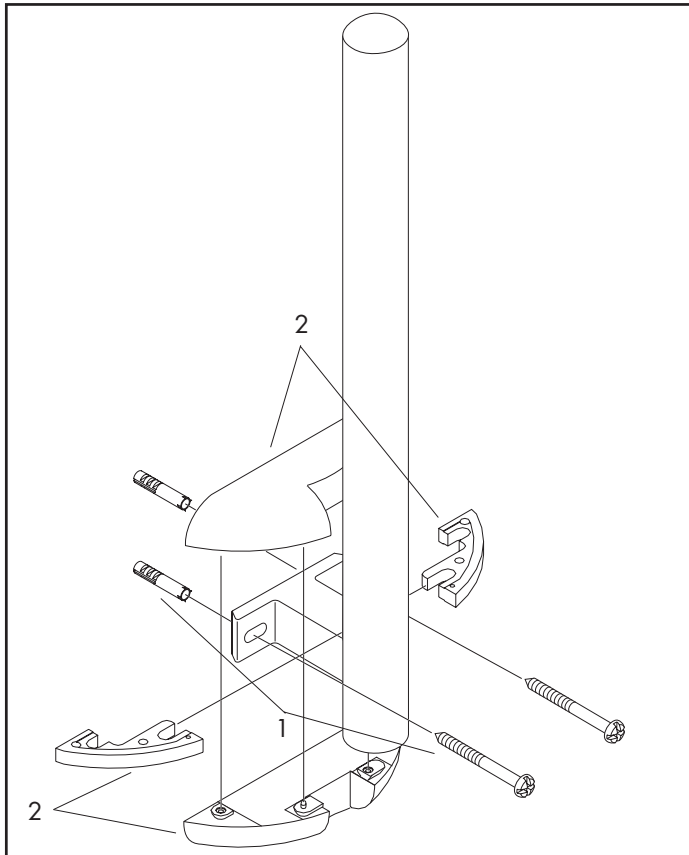
07/91 - 09/02

40635XXX



> 10/02

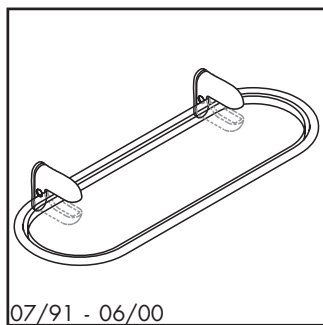
Axor Uno [19.1]



Pos.	Bezeichnung	Descrizione	Description	Nr./Nr./No.	VE	PG
1	Befestigungsteile	set di fissaggio	mounting set	40915000	1	4
2	Rosetten + Schieber für Arco	copertura supporto per Arco	escutcheon + sleeve for Arco	40689XXX	1	9*
3	Glaseinsatz	contenitore in cristallo	glass cup on its own	40086000	1	9
4	Stiel mit Bürste	manico con spazzola	stick with brush	40089XXX	1	12*
5	WC-Bürste schwarz	spazzola per WC nero	WC-brush black	40068000	1	7

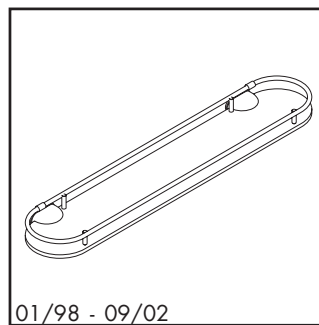
Axor Arco / Axor Allegroh

Ablage / Mensola / Shelf



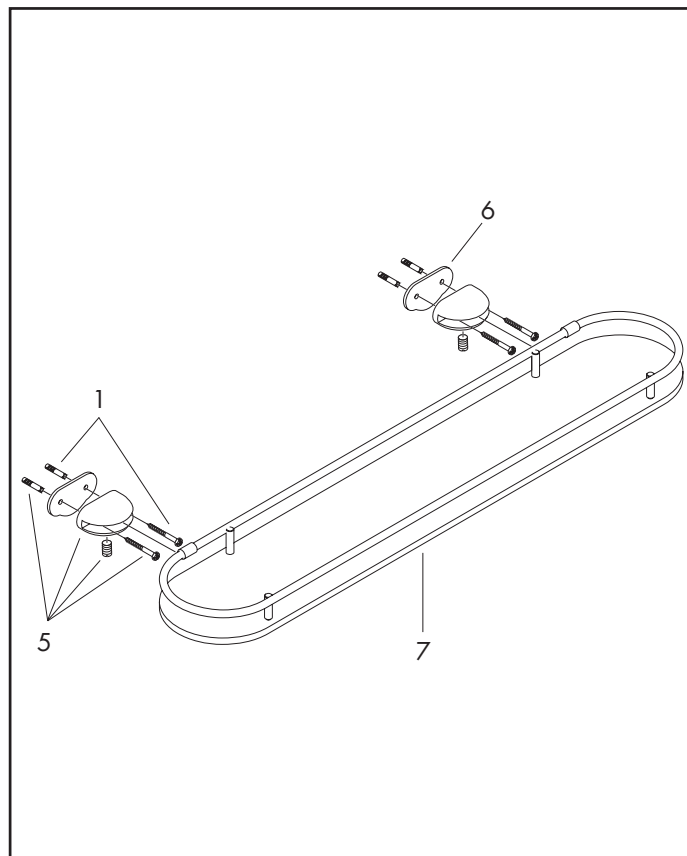
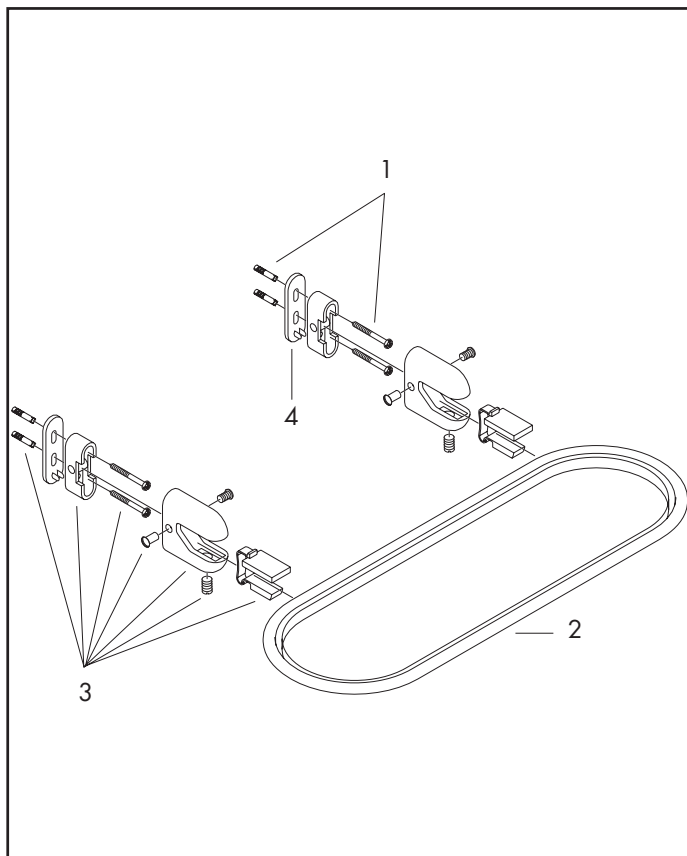
07/91 - 06/00

40650XXX



01/98 - 09/02

40352XXX



Pos.	Bezeichnung	Descrizione	Description	Nr./Nr./No.	VE	PG
1	Befestigungsteile	set di fissaggio	mounting set	40915000	1	4
2	Ablage ab 5/90 700 mm	mensola fino 5/90 700mm	shelf until 5/90 700 mm	40055000	1	18
3	Halteelement und Befestigungsteile	elementi di supporto e fissaggio	support and mounting set	40552XXX	1	12*
4	Dekorscheibe, klein	placca decoro, piccolo	deco-disk, small	94961XXX	1	7*
5	Halteelement und Befestigungsteile	elementi di supporto e fissaggio	support and mounting set	40255XXX	1	11*
6	Dekorscheibe	placca decoro	deco-disk	94969990	1	13
7	Glasablage	mensola	shelf	96249000	1	20

