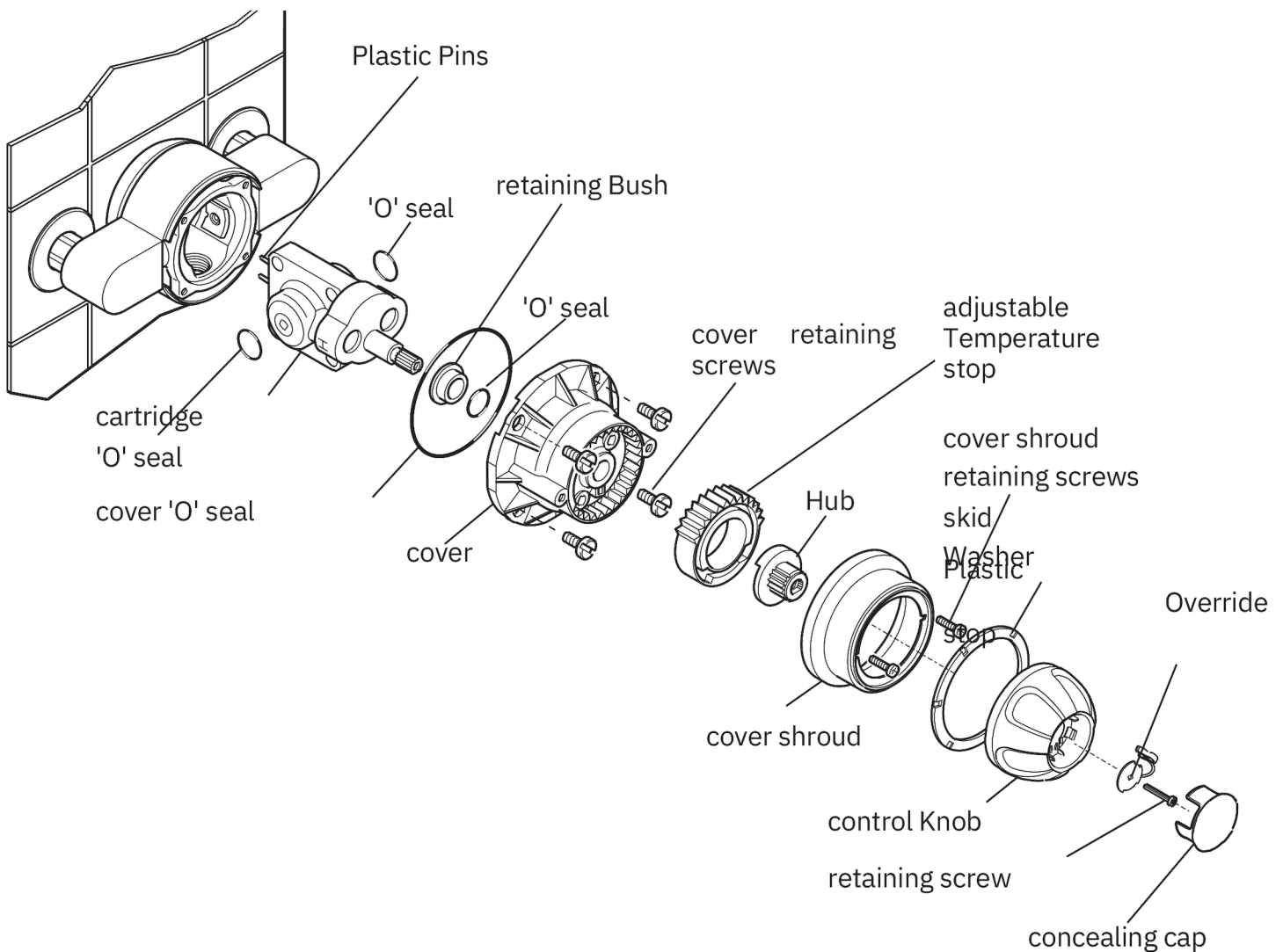


Cartridge Renewal

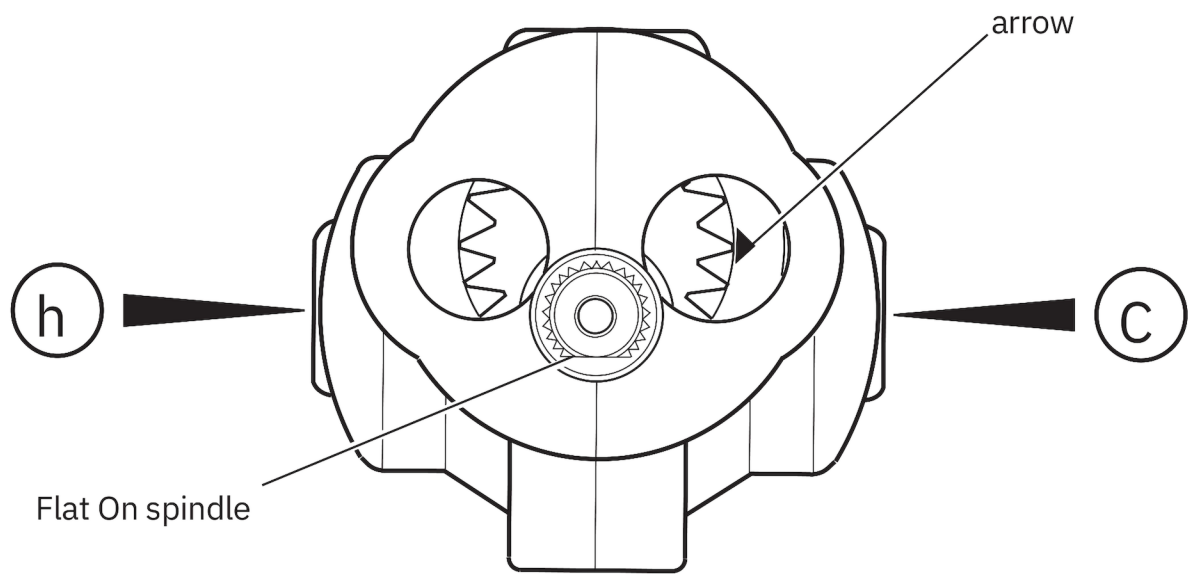
should the cartridge require renewal then the following procedure should be followed:

Important! Use only silicone based lubricants when reassembling.

1. Turn off the water supplies and open the shower control to relieve the trapped water pressure.
2. Prise off the concealing cap, remove the control knob retaining screw/plastic override stop and the control knob.
3. remove the two shroud retaining screws and the cover shroud. note the position of the adjustable temperature stop then remove. remove the hub.
4. Undo the four cover retaining screws and remove the cover. (a quantity of water will be discharged).
5. Pull the pressure balancing cartridge from the shower control body.
6. Identify which is the hot inlet of the shower control and fit the new cartridge accordingly. The inlets on the new cartridge are marked "h" for Hot, "C" for cold.



7. Push the cartridge fully into the shower control body. Make sure that the two plastic pins locate in the brass body recess.
note! Make sure that the arrow on the end face of the cartridge points to the letter "C".
Important! Make sure that the two inlet seals are well-lubricated and correctly located before refitting the cartridge.
8. Make sure that the cover "O" seal is correctly located on the cover.
9. Refit the cover, and secure with the four cover retaining screws. Make sure that the flat on the spindle is lowermost.
note! There is a one-way cartridge location feature on the cover which ensures the cover is correctly fitted.



end View of Cartridge

10. Push the hub onto the spindle.
11. Turn on the water supplies, and check for any leaks.
12. Refit the adjustable temperature stop in its original position.
13. Temporarily fit the control knob (with the override button at the bottom). Rotate the control knob anticlockwise until the desired temperature is achieved. Note the final position of the override button, e.g. 11 O' clock. Rotate the control knob to the "off" position.
14. The maximum temperature will now require resetting, refer to section:
 - 'Commissioning, Adjustable Maximum Temperature setting'