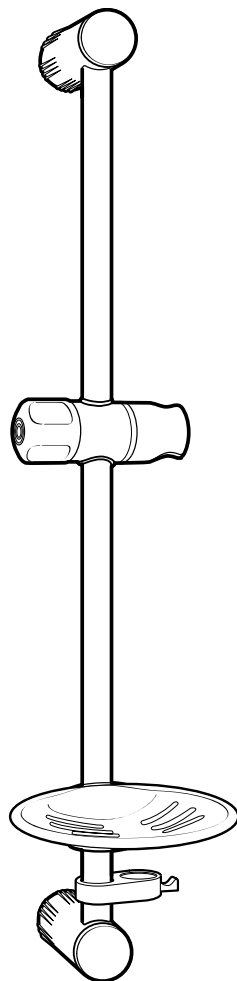


***Kit 5112***  
***Aaron riser rail***  
***assembly***

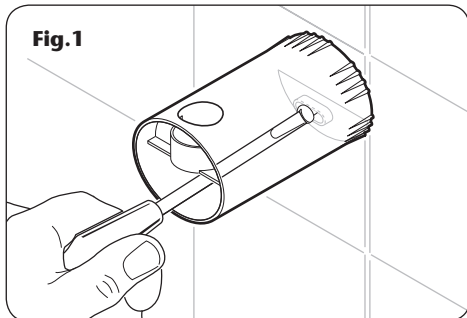


**Installation**  
**Instructions**

Installers please note these instructions are to be left with the user

## FITTING THE AARON RISER RAIL ASSEMBLY

**Fig.1**



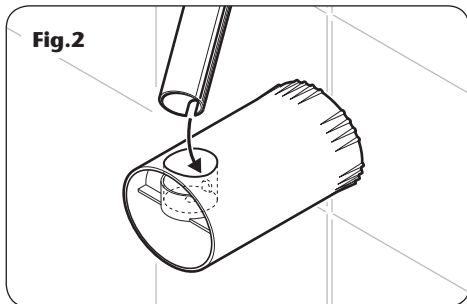
### WARNING!

**Check there are no hidden cables or pipes before drilling holes for wall plugs. Use great care when using power tools near water. The use of a residual current device (RCD) is recommended.**

Decide the position for the rail on the wall within the shower area. Proceed as follows:

Offer the lower bracket to the wall.

**Fig.2**



**Note:** The lower bracket has a small peg in the riser rail hole.

Position the bracket and mark the centre hole. Remove the bracket then drill and plug the wall. *(The wall plugs provided are suitable for most brick walls — use an appropriate masonry drill, but if the wall is plasterboard or a soft building block, use suitable wall plugs and an appropriate drill bit).*

Replace the bracket to the wall and secure in place using the screw supplied (**fig.1**).

**Note:** The locating hole is elongated to allow for some adjustment.

Locate the rail into the bracket. Make sure it fits properly with the notch in the riser rail located onto the peg in the bracket (**fig.2**).

Fit the upper bracket onto the riser rail and, making sure the rail is vertical, mark the centre hole. Remove the bracket and rail, then drill and plug the wall.

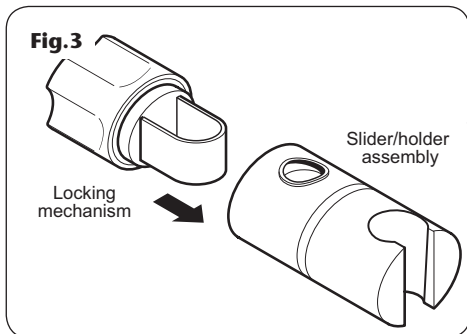
Fit the locking assembly to the slider/holder so that the holes align, then slide onto the rail (**fig.3**). Tighten the holder to the rail. Make sure the tapered thin end of the showerhead holder is in the upper position (**fig.4**).

Slide the soap dish (if supplied) and hose retainer onto the bottom of the riser rail (**fig.5**).

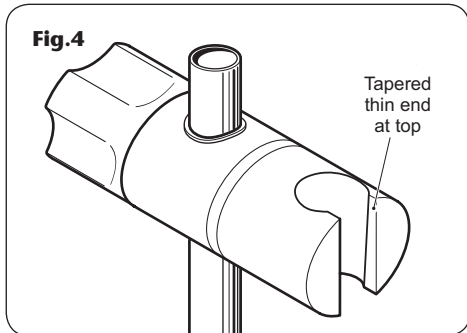
Place the rail onto the lower bracket. Replace the upper bracket onto the rail and secure to the wall with the screw supplied.

Fit the end caps onto both brackets. The end caps will only fit one way.

**Fig.3**



**Fig.4**



## FITTING THE AARON RISER RAIL ASSEMBLY (continued)

### FITTING THE HOSE AND SHOWERHEAD

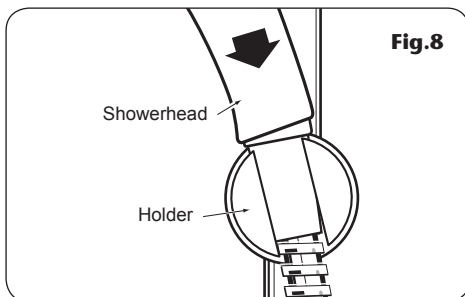
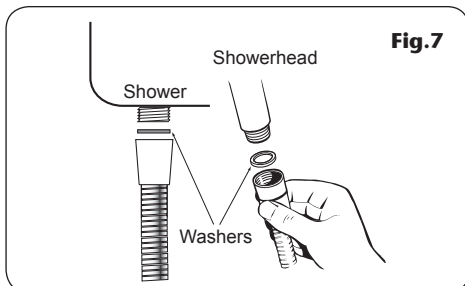
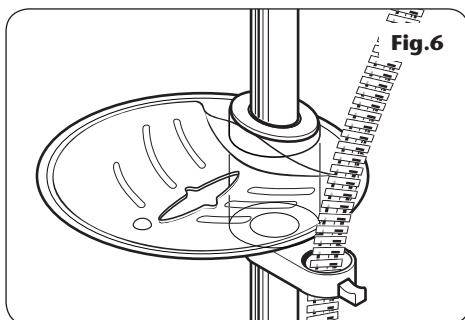
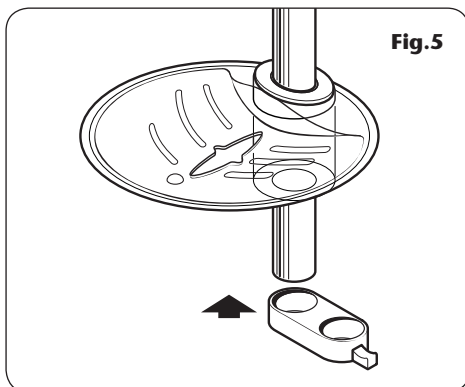
Feed the flexible hose through the hose retainer (**fig.6**) so that it acts as a retaining ring (Water Regulations).

Screw the flexible hose to the shower outlet and showerhead, making sure the supplied washers are in place at both ends of the flexible hose (**fig.7**).

Place the showerhead into the holder and check that it fits correctly (**fig.8**).

**Note:** The holder is slightly tapered and the showerhead and hose will only fit from one direction.

**IMPORTANT:** It is the conical end of the hose which grips into the holder. The showerhead will not fit in the holder without the hose attached.



## SPARE PARTS

Ref. Description	Part Number
------------------	-------------

- |                                   |          |
|-----------------------------------|----------|
| – Kit white (without riser rail)  | 88900009 |
| – Kit chrome (without riser rail) | 88900000 |

- |                                   |          |
|-----------------------------------|----------|
| <b>1.</b> Brackets & trims (pair) |          |
| white                             | 83310440 |
| chrome                            | 83308340 |
| <b>2.</b> Trims (single)          |          |
| white                             | 83310450 |
| chrome                            | 83308350 |
| <b>3.</b> Riser rail – 19mm       |          |
| aluminium                         | 88800008 |
| chrome                            | 88800000 |
| <b>4.</b> Showerhead holder       |          |
| white                             | 83310460 |
| chrome                            | 83308360 |
| <b>5.</b> Soap dish               |          |
| white                             | 83310470 |
| clear                             | 83308370 |
| <b>6.</b> Hose retainer           |          |
| white                             | 83310480 |
| chrome                            | 83308380 |

Flexible hoses available in the following sizes:

- 1.00 m in white, chrome and gold
- 1.25 m in white, chrome and gold
- 1.75 m in chrome only

